

Steps bringing us to this point

- 2007 Wastewater Expansion & Financing Plan, HSE
- 2008-9 District Reviewed possibility of seasonal discharge to the River with an NPDES Permit; Decided it was too costly and wasted an available resource
- 2010 IWMP Update; identified Recycled water as option to offset potable water use
- **2011 Board adopted Recycled Water Policy 2011-07**
- 2012 Ordinance No. 2011-05, Adding Chap.17 to the District Code establishing policies and regulation of the installation, connection and use of the District Recycled Water System
- 2012 Developed Recycled Water Code
- 2012 Title 16 Feasibility Study
- 2013 Developed and adopted Recycled Water Standards
- 2013 Title 22 Engineering Report for DDW (formerly CDPH) approved 2013-11
- 2013 Title XVI Recycled Water Feasibility Study
- 2013-14 Report of Waste Discharge (master program report) 2013-12
- 2014 Completed IS/MND and filed NOD to support to program (CEQA)
- 2014 Completed negotiations with DDW and Regional Board
- 2014 Dec.4 adoption of Master Reclamation Permit & WDR
- 2015 Title XVI Grant Application to USBR
- 2016-01 Water Supply Assessment – Rancho Murieta North Project
- 2016-17 Development & adoption of Preliminary Design Report (PDR)
- 2017 Condition assessment of 12" forcemain
- **2017 Water Supply Augmentation Fee update**



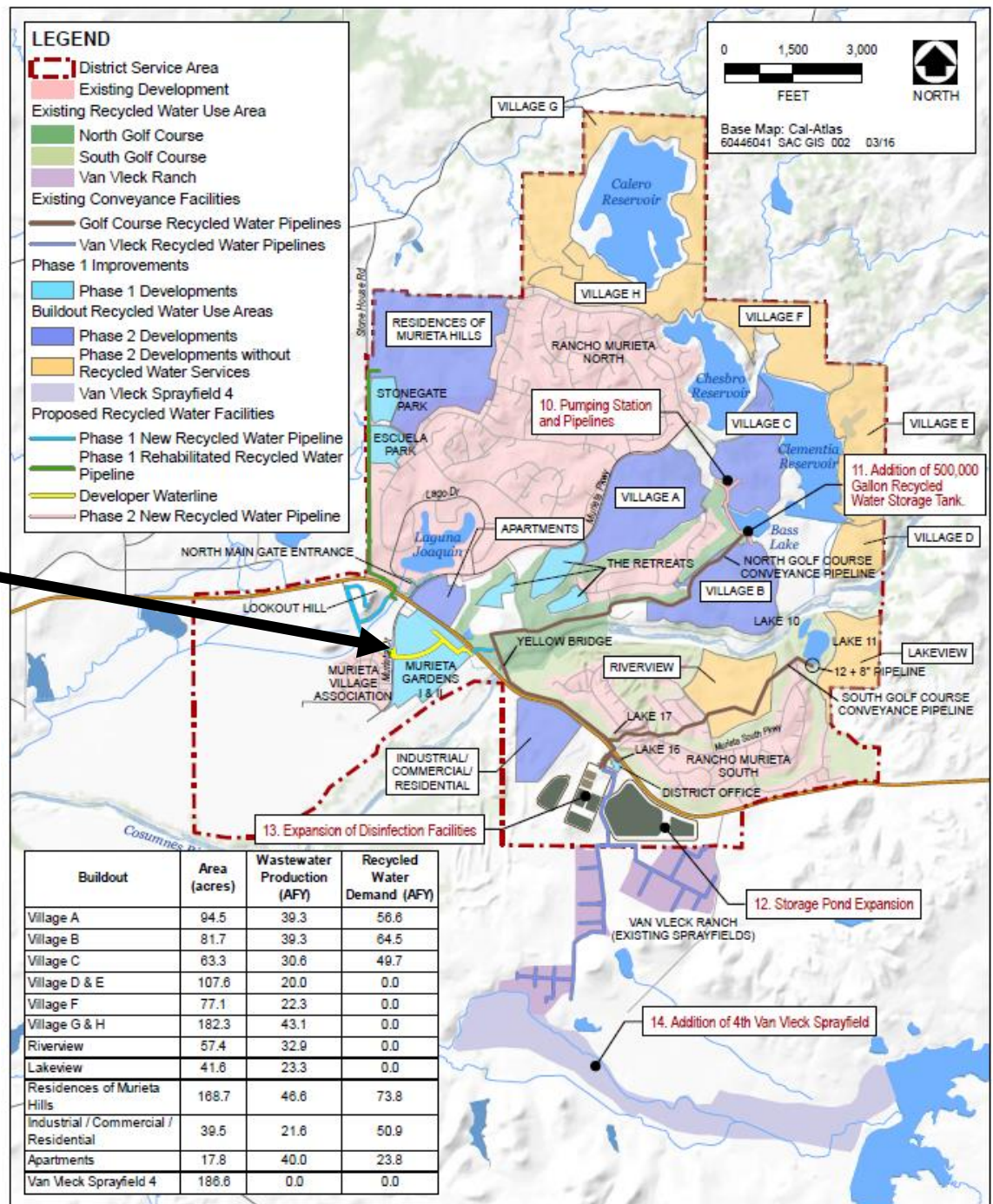
**17-5-05 Northwest Recycled
Water Transmission Main
17-5-11 Commercial Loop
Conversion**

Proposed
Developments:
wastewater
production &
recycled
water
demands

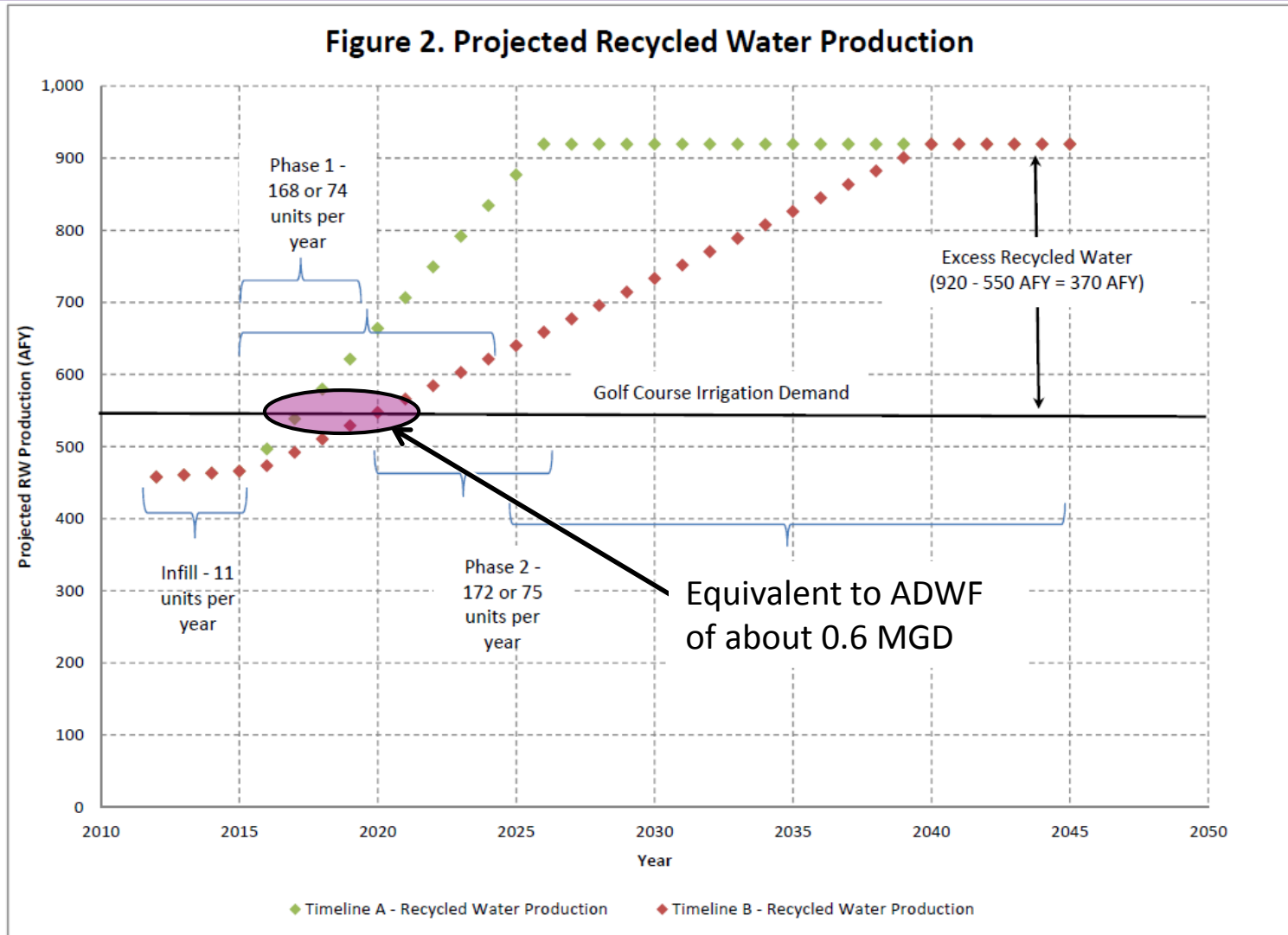
Development/Proposed Recycled Water Use Area	Description	Projected RW Demand (AFY)	Recycled Production (AFY)
Existing Recycled Water Use Areas			
Existing Development			
Rancho Murieta North & South Gold Courses	18-hole golf courses (~250 ac)	550	380.9
Van Vleck Ranch (Field 1, Field 2, and Field 3)	Field 1 (~49ac), Field 2 (~25ac), Field 3 (~22 ac)	215	
Sub Total		550* / 765**	380
Phase 1 Proposed Expanded Recycled Water Use Areas (~2016-2020)			
Infill	0.05 MGD allocation assumed	0	56.0
North Main Gate Entrance	Conversion to recycled water	2.8	0.0
District Office	Conversion to recycled water	5.4	0.0
Retreats	84 residential units	15.1	19.8
Murieta Gardens	78 residential units, commercial equivalent to 227 residential units	30.5	71.9
Stonehouse Park (4-acre park)	Conversion to recycled water	36.2	0.0
Escuela Park (4-acre park)	Conversion to recycled water	12.1	0.0
	Phase 1 Sub Total	102	148
	Sub Total	650* / 865**	530
Phase 2 Proposed Expanded Recycled Water Use Areas (~2020-2025)			
Village A	167 residential units	56.5	39.3
Village B	167 residential units	64.6	39.3
Village C	130 residential units	49.6	30.6
Village D	42 residential units	0	9.9
Village E	43 residential units	0	10.1
Village F	95 residential units	0	22.3
Village G	53 residential units	0	12.5
Village H	122 residential units	0	28.7
Riverview	140 residential units	0	32.9
Lakeview	99 residential units	0	21.4
Apartments	170 residential units	23.8	23.3
Residences of Murieta Hills	198 residential units	73.8	46.6
Industrial/Commercial/Residential	160 equivalent residential units	50.9	37.6
Van Vleck Ranch	Sprayfield 4	410	
	Phase 2 Sub Total	320* / 730**	355
	Grand Total	970* / 1,595**	885
* Beneficial reuse			
** Beneficial reuse plus Van Vleck sprayfield disposal demands			

Exhibit of Proposed Recycled Water System Layout

Murieta Gardens development



Early Estimate of when Recycled Water becomes available

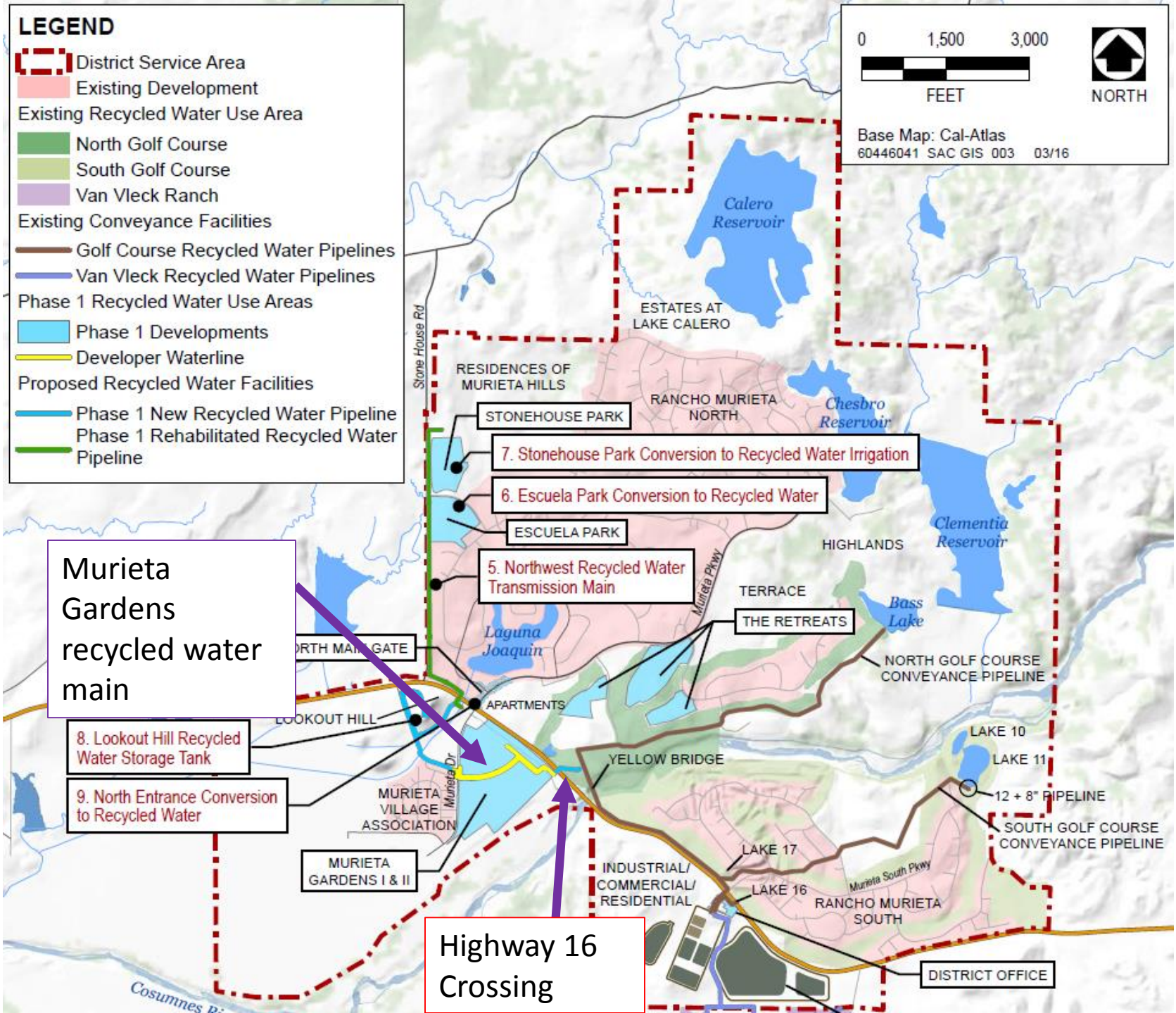


LEGEND

- District Service Area
- Existing Development
- Existing Recycled Water Use Area
- North Golf Course
- South Golf Course
- Van Vleck Ranch
- Existing Conveyance Facilities
- Golf Course Recycled Water Pipelines
- Van Vleck Recycled Water Pipelines
- Phase 1 Recycled Water Use Areas
- Phase 1 Developments
- Developer Waterline
- Proposed Recycled Water Facilities
- Phase 1 New Recycled Water Pipeline
- Phase 1 Rehabilitated Recycled Water Pipeline

0 1,500 3,000
FEET
NORTH

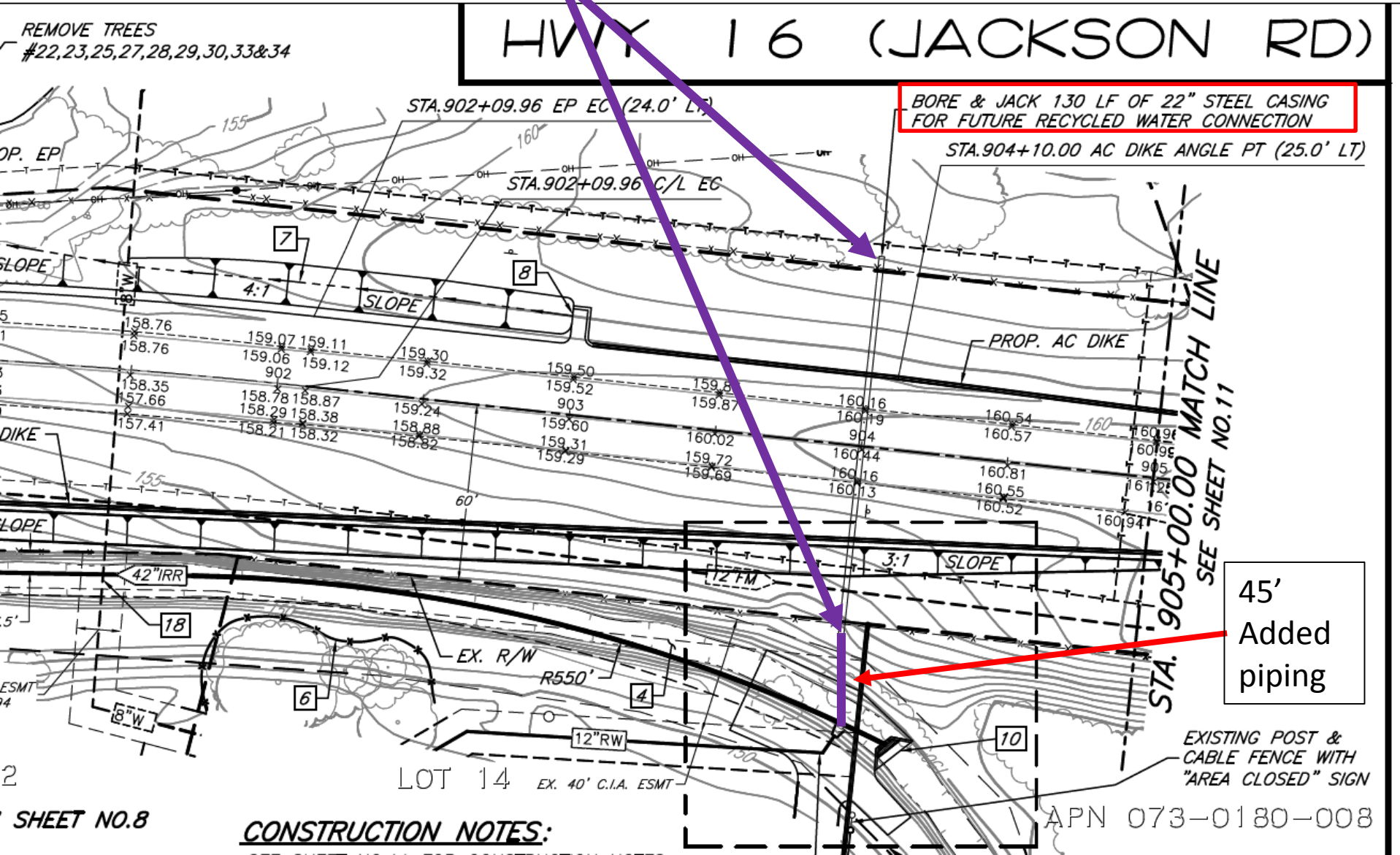
Base Map: Cal-Atlas
60446041 SAC GIS 003 03/16



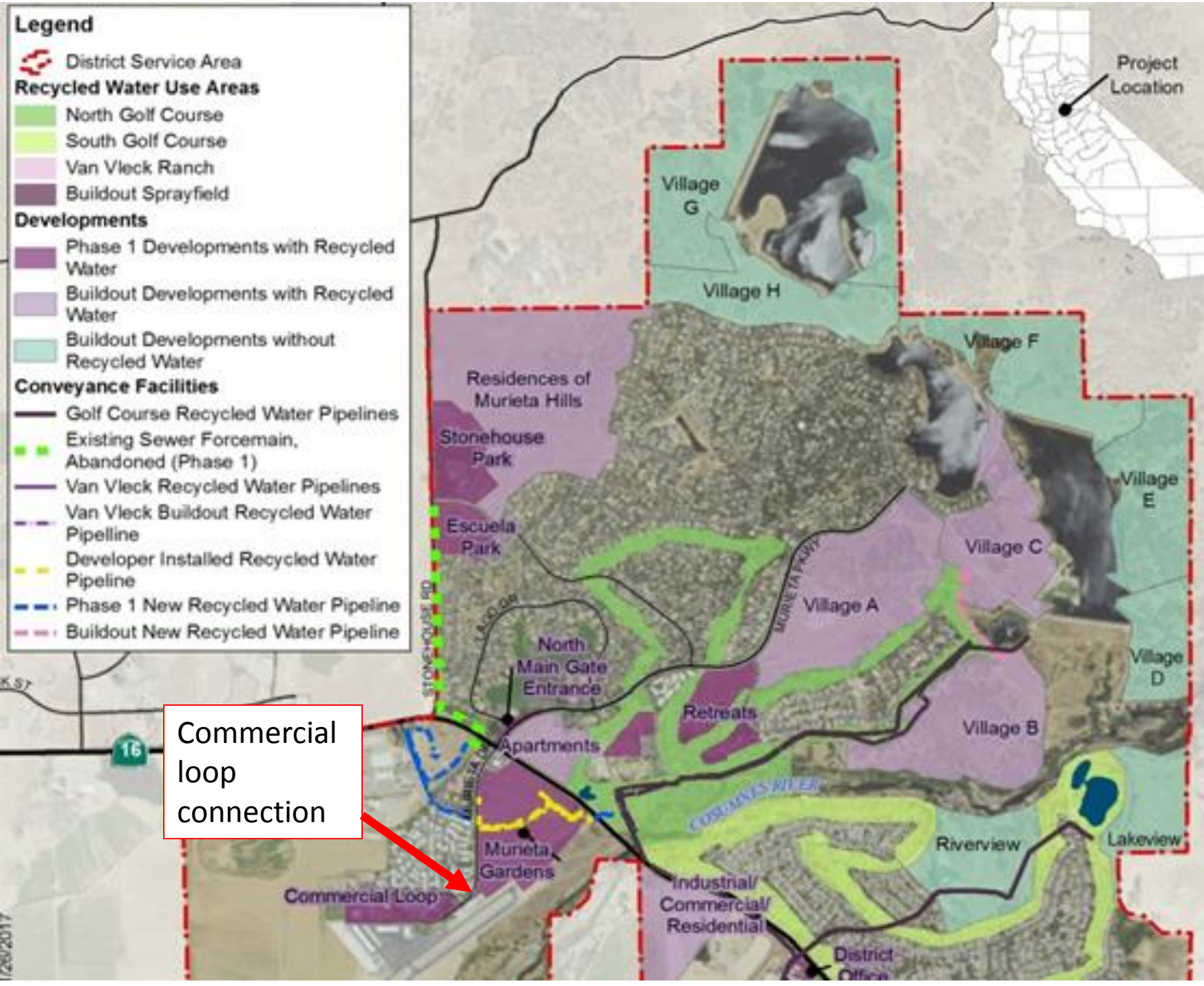
Murieta Gardens recycled water main

Highway 16 Crossing

Highway 16 Undercrossing – First part of the Northwest Recycled Water Transmission main connection from the North course transmission main.



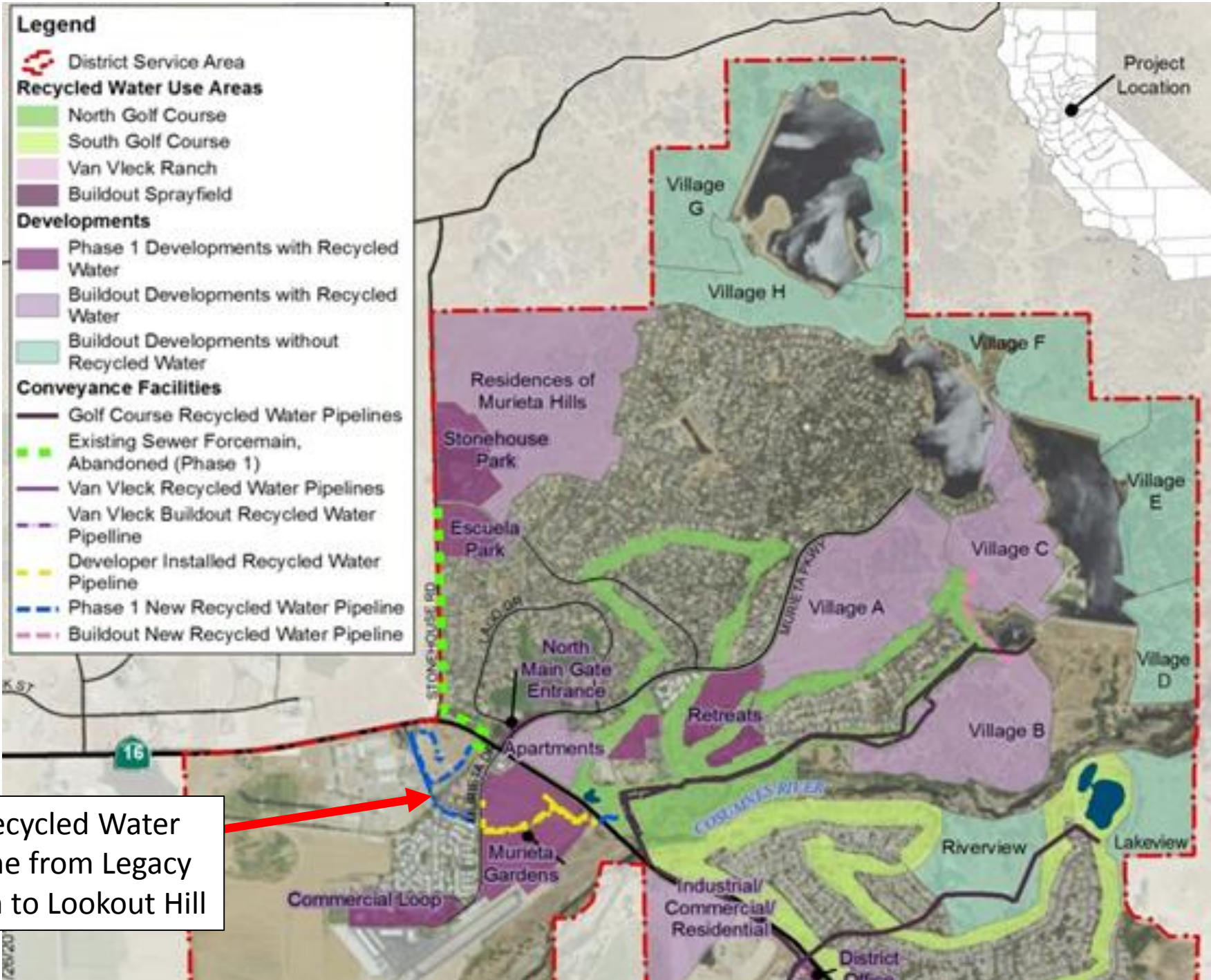
- Legend**
-  District Service Area
 - Recycled Water Use Areas**
 -  North Golf Course
 -  South Golf Course
 -  Van Vleck Ranch
 -  Buildout Sprayfield
 - Developments**
 -  Phase 1 Developments with Recycled Water
 -  Buildout Developments with Recycled Water
 -  Buildout Developments without Recycled Water
 - Conveyance Facilities**
 -  Golf Course Recycled Water Pipelines
 -  Existing Sewer Forcemain, Abandoned (Phase 1)
 -  Van Vleck Recycled Water Pipelines
 -  Van Vleck Buildout Recycled Water Pipeline
 -  Developer Installed Recycled Water Pipeline
 -  Phase 1 New Recycled Water Pipeline
 -  Buildout New Recycled Water Pipeline



Commercial loop connection

Legend

- District Service Area
- Recycled Water Use Areas**
 - North Golf Course
 - South Golf Course
 - Van Vleck Ranch
 - Buildout Sprayfield
- Developments**
 - Phase 1 Developments with Recycled Water
 - Buildout Developments with Recycled Water
 - Buildout Developments without Recycled Water
- Conveyance Facilities**
 - Golf Course Recycled Water Pipelines
 - Existing Sewer Force Main, Abandoned (Phase 1)
 - Van Vleck Recycled Water Pipelines
 - Van Vleck Buildout Recycled Water Pipeline
 - Developer Installed Recycled Water Pipeline
 - Phase 1 New Recycled Water Pipeline
 - Buildout New Recycled Water Pipeline



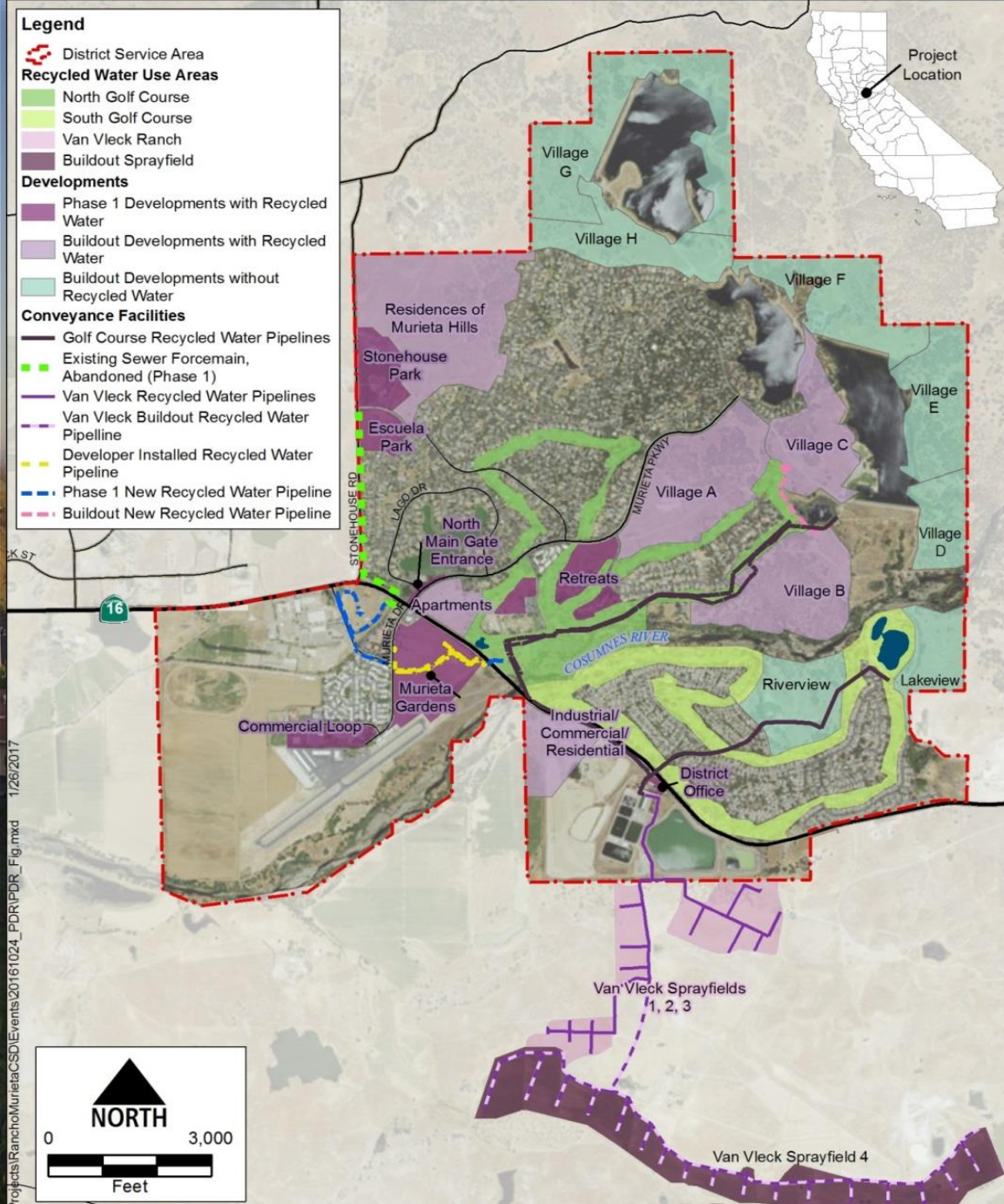
Recycled Water line from Legacy Ln to Lookout Hill



Recommended Next Steps

- 1) Authorize GM to enter into a Facilities Extension Agreement (FEA) for Hwy 16 Bore/Casing and Commercial Loop (Cantova) extension including a reimbursement mechanism in amounts not to exceed what has been proposed, as well as sign Encroachment permit
- 2) Have Coastland review FEA and confirm what pro-rata share of infrastructure is as appropriate
- 3) Bring back drafts of FEA to Imp.Comm. for final review.

* Timing is not as critical as once anticipated



Service Layer Credits: Source: Esri, DigitalGlobe, GeoEye, i-cubed, Earthstar Geographics, CNES/Airbus DS, USDA, USGS, AEX, Getmapping, Aerogrid, IGN, IGP, swisstopo, and the GIS User Community