

**RANCHO MURIETA COMMUNITY
SERVICES DISTRICT**

**1915 ACT
ASSESSMENT DISTRICT**

2003/04 ANNUAL REPORT

Prepared for

**Rancho Murieta
Community Services
District**

December 2003

Prepared by:

N|B|S

Corporate Office:

41661 Enterprise Circle North, Suite 225

Temecula, CA 92590

(800) 676-7516

www.nbsgov.com

EXECUTIVE SUMMARY/SPECIAL ISSUES

Improvement District No. 1

The following table summarizes the 2003/04 levy for the district, including amounts that were billed directly to parcel owners as a result of non-taxable status or other special circumstances:

District	Parcels Applied at County	Amount Applied at County	Parcels Billed Directly	Amount Billed Directly	Total Parcels Levied	Total Levy Amount
ID 1	518	\$1,281,925.88	0	\$0.00	518	\$1,281,925.88

The Improvement Fund was initially funded with \$14,749,000 to be used to pay the costs of issuing bonds and acquiring and constructing the authorized improvements.

The Reserve Fund was initially funded with \$1,786,000. According to the Official Statement, excess levy collections and interest earnings will be deposited into the Reserve Fund until the Reserve Fund balance equals the Reserve Requirement, which is defined as 9.4% of the original bonded amount. The Reserve Fund is currently below the required level. Funds should be allowed to accumulate until the Reserve Fund meets the Reserve Requirement.

The surplus funds in the Redemption Fund will be combined with the Reserve Fund to call all outstanding bonds on September 2, 2004.

Prior to the use of the surplus funds, NBS recommends arbitrage calculations be performed to ensure no liability exists.

TABLE OF CONTENTS

EXECUTIVE SUMMARY/SPECIAL ISSUES

1. DISTRICT OVERVIEW	1-1
1.1 General Information Summary	1-1
1.2 Debt Service and Levy Collection Analysis	1-2
2. FUND ANALYSIS	2-1
2.1 Fund Balances/Investment Information	2-1
2.2 Construction Fund Analysis	2-1
2.3 Reserve Fund Analysis	2-2
2.4 Redemption Fund Analysis	2-3
2.5 Arbitrage Rebate Requirements and Liability	2-3
3. DELINQUENCY MANAGEMENT	3-1
3.1 Overview	3-1
3.2 Delinquency Rates and Steps Taken	3-1
3.3 Foreclosure Covenant Compliance	3-2
3.4 Foreclosure Covenant	3-2
3.5 Delinquency Summary Reports	3-3
3.6 Teeter Plan Participation & County Revenue Apportionment Schedule	3-4
4. 2003/04 LEVY	4-1
4.1 Annual Levy Components	4-1
4.2 Levy Summary	4-3
5. DEBT SERVICE	5-1
5.1 Bond Call Summary	5-1
5.2 Debt Service Schedules	5-2
6. BACKGROUND INFORMATION	6-1
6.1 Project Description and Method of Spread	6-1
6.2 Assessment Diagrams	6-2
6.3 Parcel Changes Summary	6-3
7. DELINQUENCY DETAIL	7-1
8. FISCAL YEAR 2003/04 BILLING	8-1
8.1 Directly Billed Parcels	8-1
8.2 Levy Amounts	8-2

RANCHO MURIETA COMMUNITY SERVICES DISTRICT
15160 Jackson Road
P.O. Box 1050
Rancho Murieta, CA 95683
Phone - (916) 354-3700
Fax - (916) 354-2082

DISTRICT SERVICE PROVIDERS

District	Bond Counsel	Underwriter	Trustee	Apportionment Engineer	Formation Engineer
ID 1	Orrick, Herrington & Sutcliffe San Francisco, CA	MuniciCorp of California Los Angeles, CA	U.S. Bank Trust (415) 273-4508	N B S Temecula, CA (800) 676-7516	RAYMOND VAIL and ASSOCIATES Sacramento, CA

Administrator of District
<p>N B S</p> <p>Tim Seufert, Client Services Director Greg Davidson, Senior Consultant Joe Flores, Consultant</p> <p>(800) 676-7516 www.nbsgov.com</p>

1. DISTRICT OVERVIEW

1.1 General Information Summary

District	Maturity Date	Value to Debt Ratio(1)	Delinquency Rate(2)	Outstanding Debt Service(3)	Remaining Collections(4)	Total Surplus / (Deficit) of Collections
ID 1	9/2/2006	32.60:1	0.28%	\$4,420,160.00	\$5,002,833.32	\$582,673.32

(1) Assessed value as of January 1, 2003 for all active parcels, divided by remaining billable principal for each active parcel after 2002/03 debt service has been billed.

(2) Delinquency rate for FY 2002/03.

(3) After September 2, 2003 debt service payment has been made.

(4) Sum of the remaining billable principal and interest for each active parcel after 2002/03 debt service has been billed.

1.2 Debt Service and Levy Collection Analysis

The following report shows the total amount of principal and interest that can be billed to the active parcels in the District and compares it to the total principal and interest due to District bond holders. The report is broken down by year until maturity of the bonds. The billable total is comprised of the aggregate repayment schedules for each of the remaining active parcels in the District. The amounts due to bond holders are derived from the district debt service schedule, net of any bond calls.

A variance between the amounts billable to the parcels and the amounts payable to bond holders is shown as a surplus or deficit in the report. A variance is created when: (i) a parcel prepays its assessment, (ii) a bond call is made using surplus funds, or (iii) contingent assessments are added.

Rancho Murieta Community Services District
County of Sacramento, California
ID 1 - Assessment District No. 1

Variance Between Billing Collections and Bond Debt Service Payments

Bill Date	Principal Billed	Principal Due	Interest Billed	Interest Due	Surplus (Deficit)
8/1/2003	\$1,309,982.02	\$1,160,000.00	\$358,411.97	\$316,680.00	\$191,713.99
8/1/2004	1,418,106.93	1,250,000.00	248,372.49	219,240.00	197,239.42
8/1/2005	1,538,708.40	1,360,000.00	129,251.51	114,240.00	193,719.91
Total:	\$4,266,797.35	\$3,770,000.00	\$736,035.97	\$650,160.00	\$582,673.32



2. FUND ANALYSIS

2.1 Fund Balances/Investment Information

Fund balances as of June 30, 2003 for the District are shown in the following table:

District	Construction Fund	Reserve Fund	Redemption Fund	Prepayment Fund	Total
ID 1	\$45,107.00	\$1,782,490.00	\$2,466,217.00	\$0.00	\$4,293,814.00

2.2 Construction Fund Analysis

The Construction Fund is created upon formation of the District. All bond proceeds not associated with the financing and administrative costs of the bond issuance are deposited in this Fund to pay for the improvements to be constructed and/or acquired. Once the project has been completed, any remaining balance in the Fund must be declared surplus and disposed of in accordance with §10427 and §10427.1 of the Streets and Highways Code. Specifically, the Code allows the moneys to be disposed of in any combination of the following ways:

1. Transfer to the general fund of the Agency the lesser of \$1,000, or five percent of the total amount expended from the Construction Fund.
2. Retain for maintenance of the improvements.
3. Credit the amount to the annual levy or reduce outstanding assessments by calling bonds. As part of any levy credit or bond call, the owners of any parcels which prepaid their assessment must receive their pro rata share of the surplus.

The following table shows for the District the June 30, 2003 Construction Fund balance and the project status:

District	6/30/03 Balance	Project Status	Credits Given to Prepaid Parcels at Project Completion	Bond Call or Levy Credit at Project Completion
ID 1	\$45,107.00	Ongoing	\$0.00	\$0.00

The Improvement Fund was initially funded with \$14,749,000 to be used to pay the costs of issuing bonds and acquiring and constructing the authorized improvements. Improvements have been completed and the remaining construction funds will be retained for maintenance of the improvements.

2.3 Reserve Fund Analysis

The District's Reserve Fund is established upon formation of the District for the purpose of providing payment of debt service to bondholders while delinquencies, if any, are cured within the District. The Reserve Fund balance is measured by three different standards. The first of these, the Reserve Requirement, is the minimum amount required to maintain a "fully funded" Reserve balance according to the bond indenture.

There is also a maximum reserve fund balance specified by the IRS General Arbitrage Yield Restriction Rules §1.148-2(f)(2). The intent of this rule is to limit the size of a reserve fund to a "reasonable" size. In some cases, the Size Limitation will be the same amount as the "Reserve Requirement" mentioned above. The rule states the fund shall not exceed any of the following:

1. 10% of the original bond issue.
2. 125% of the average annual debt service for remaining years.
3. The maximum annual debt service for remaining years.

Thirdly, when an assessment is prepaid, the payee receives a credit for the parcel's prorata share of the Reserve Fund's Initial Proceeds. This Prepayment Credit amount equals the Reserve Fund's liability should all parcels in the District prepay their assessments. This amount is not a formal measure of the Fund's status, only a useful measurement.

According to §8887 of the Streets and Highways Code and bond documents, a surplus in the Reserve Fund may be applied as a credit to the next year's levy of assessments or be used to call bonds. This credit will reduce the amount to be collected from the property owners within the District.

The following table shows the June 30, 2003 Reserve Fund balance for the District, the Reserve Requirement, the IRS Size Limitation, the Prepayment Credit, and the Available Surplus and/or Deficit:

District	Initial Proceeds	6/30/03 Balance	Reserve Req't(1)	IRS Size Limitation	Prepayment Credit	Surplus / (Deficit)
ID 1	\$1,786,000.00	\$1,782,490.00	\$1,786,000.00	\$1,476,680.00	\$1,489,717.99	(\$3,510.00)

(1) Defined as 9.4% of the original bonded amount.

The Reserve Fund was initially funded with \$1,786,000. According to the Official Statement, excess levy collections and interest earnings will be deposited into the Reserve Fund until the Reserve Fund balance equals the Reserve Requirement, which is defined as 9.4% of the original bonded amount. The Reserve Fund is currently below the required level. Funds should be allowed to accumulate until the Reserve Fund meets the Reserve Requirement.

2.4 Redemption Fund Analysis

The Redemption Fund serves as a transitory account where levy collections are deposited for payment to the bondholders on debt service payment dates (March 2 and September 2 annually). Because a portion of the moneys collected are used to reimburse the Agency for administrative expenses, the Redemption Fund balance after the September 2 debt service payment has been made should be sufficient to pay administrative costs until the next levy payment is collected. We generally recommend that the Agency retain four months worth of administrative expenses to ensure the availability of funds until the December 10th apportionment of funds is received from the County Tax Collector.

The following table shows the June 30, 2003 Redemption Fund balance for the District, the upcoming debt service payment, and any available surplus after estimated administrative expenses have been retained:

District	6/30/03 Balance	9/2/03 Payment	9/2/03 Bond Call	Estimated Administrative Expenses	Amount Credited to 2003/04 Levy	Surplus / (Deficit)
ID 1	\$2,466,217.00	\$1,272,745.00	\$0.00	\$4,350.00	\$400,000.00	\$789,122.00

The surplus funds in the balance of the Redemption Fund will be combined with the Reserve Fund to call all outstanding bonds on September 2, 2004.

A complete, year-by-year comparison of levy collections versus debt service payments can be found in Section 1.

2.5 Arbitrage Rebate Requirements and Liability

The Agency has covenanted to comply with all of the requirements of Section 148 of the Internal Revenue Code (the "Code") relating to the calculation and payment of any arbitrage rebate amount. Section 148 requires that with specific exceptions, any interest earnings in excess of the bond yield for the bond issue must be rebated to the IRS.

NBS is available to assist the District in compliance with the Federal Regulations.

NBS recommends arbitrage calculations be performed prior to the use of the surplus funds to call bonds in order to ensure no liability exists.

3. DELINQUENCY MANAGEMENT

3.1 Overview

The Agency has covenanted that it will initiate judicial foreclosure against parcels with assessment installment delinquencies. In today's environment of higher delinquency rates and greater bondholder scrutiny of Agency activities, any non-compliance with foreclosure covenants may expose the Agency to bondholder lawsuits. The time frame and criterion for foreclosure are defined in the offering documents and are shown in Section 3.4 of this report.

NBS assists the Agency by providing a comprehensive delinquency management program including discussion of the issuer's foreclosure covenant, providing delinquency information from the County's redemption tapes, and coordinating with the Agency on the necessary steps required to implement a delinquency management policy. Once a policy is established, Agency compliance is easier to document and complaints from affected parcel owners can be minimized by showing the Agency's even-handed, unbiased covenant enforcement.

3.2 Delinquency Rates and Steps Taken

The following table shows the 2002/03 delinquency rates for the Districts as of 6/30/03:

District	2002/03 Levy	2002/03 Delinquencies	2002/03 Delinquency Rate	Delinquency Management Steps Taken
ID 1	\$1,477,375.84	\$4,096.94	0.28%	Reminder Letters Sent

Pursuant to the foreclosure covenant, NBS sent reminder letter to all delinquent parcels.

See Section 7 for a detailed listing of delinquencies for the 2002/03 and prior fiscal years.

3.3 Foreclosure Covenant Compliance

The annual levy constitutes a lien against the parcels subject to the levy, it does not constitute a personal indebtedness of the owners of the property within the District. There is no assurance that the owners will be financially able to pay the annual special assessment, or that they will pay such assessment even if financially able to do so. The foreclosure covenant is established to help remedy non-payment of the assessments.

The foreclosure covenant imposes a contractual obligation on the Agency to initiate and prosecute judicial foreclosure under certain circumstances defined at the issuance of the Bonds. The Agency has covenanted to initiate judicial foreclosure for each delinquency pursuant to the foreclosure covenant shown in the following table for the District.

In the event judicial foreclosure is necessary; (i) the Agency may need to advance funds from the reserve fund, or (ii) in the case of extremely high delinquencies, the reserve fund may be depleted, and a delay in payment of debt service to bondholders may occur.

The following table shows the foreclosure covenant, the District(s) legal representation, and a recent history of foreclosure in the District (if any) as of 6/30/03:

District	Foreclosure Covenant	Foreclosure Attorney	Foreclosure Recap
ID 1	Within 150 days of delinquency	Not applicable	None necessary

3.4 Foreclosure Covenant

The Foreclosure covenant is defined as follows:

Improvement District 1

The Bond Law provides that if any reassessment or installment thereof or any interest thereon is not paid when due, the District may order the institution of a superior court action to foreclose the lien of the unpaid reassessment. In such an action, the real property subject to the unpaid reassessment may be sold at judicial foreclosure sale. This foreclosure sale procedure is not mandatory, but the District had covenanted in the Resolution that it will within 150 days following [June 30], the date of delinquency (such date being the same date as general taxes of real property in the County are determined to be delinquent), the District shall commence and diligently prosecute judicial foreclosure proceedings against each parcel of land with in the Improvement District with any amount of delinquency for the prior fiscal year or years.

3.5 Delinquency Summary Reports

The following pages summarize delinquencies for the 2002/03 and prior fiscal years.

Rancho Murieta Community Services District County of Sacramento, California

Delinquency Summary Report

District	Due Date	Billed Amount	Paid Amount	Delinquent Amount	Delinquent Amount %	Billed Installments	Paid Installments	Delinquent Installments	Delinquent Installments %
ID 1									
	8/1/1990 Billing:								
	12/10/1990	\$81,254.55	\$81,254.55	\$0.00	0.00 %	208	208	0	0.00 %
	4/10/1991	81,254.55	81,254.55	0.00	0.00 %	208	208	0	0.00 %
	Subtotal:	\$162,509.10	\$162,509.10	\$0.00	0.00 %	416	416	0	0.00 %
	8/1/1991 Billing:								
	12/10/1991	\$77,249.24	\$77,249.24	\$0.00	0.00 %	210	210	0	0.00 %
	4/10/1992	77,249.24	77,249.24	0.00	0.00 %	210	210	0	0.00 %
	Subtotal:	\$154,498.48	\$154,498.48	\$0.00	0.00 %	420	420	0	0.00 %
	8/1/1992 Billing:								
	12/10/1992	\$229,963.71	\$229,963.71	\$0.00	0.00 %	222	222	0	0.00 %
	4/10/1993	229,953.71	229,953.71	0.00	0.00 %	222	222	0	0.00 %
	Subtotal:	\$459,917.42	\$459,917.42	\$0.00	0.00 %	444	444	0	0.00 %
	8/1/1993 Billing:								
	12/10/1993	\$939,784.26	\$939,784.26	\$0.00	0.00 %	688	688	0	0.00 %
	4/10/1994	939,864.30	939,864.30	0.00	0.00 %	688	688	0	0.00 %
	Subtotal:	\$1,879,648.56	\$1,879,648.56	\$0.00	0.00 %	1,376	1,376	0	0.00 %
	8/1/1994 Billing:								
	12/10/1994	\$929,393.60	\$929,393.60	\$0.00	0.00 %	657	657	0	0.00 %
	4/10/1995	929,394.98	929,394.98	0.00	0.00 %	657	657	0	0.00 %
	Subtotal:	\$1,858,788.58	\$1,858,788.58	\$0.00	0.00 %	1,314	1,314	0	0.00 %
	8/1/1995 Billing:								
	12/10/1995	\$870,399.01	\$870,399.01	\$0.00	0.00 %	602	602	0	0.00 %
	4/10/1996	870,399.21	870,399.21	0.00	0.00 %	602	602	0	0.00 %
	Subtotal:	\$1,740,798.22	\$1,740,798.22	\$0.00	0.00 %	1,204	1,204	0	0.00 %
	8/1/1996 Billing:								
	12/10/1996	\$747,790.45	\$747,790.45	\$0.00	0.00 %	471	471	0	0.00 %
	4/10/1997	747,790.49	747,790.49	0.00	0.00 %	471	471	0	0.00 %
	Subtotal:	\$1,495,580.94	\$1,495,580.94	\$0.00	0.00 %	942	942	0	0.00 %



Rancho Murieta Community Services District County of Sacramento, California

Delinquency Summary Report

District	Due Date	Billed Amount	Paid Amount	Delinquent Amount	Delinquent Amount %	Billed Installments	Paid Installments	Delinquent Installments	Delinquent Installments %
8/1/1997 Billing:									
	12/10/1997	\$749,027.72	\$749,027.72	\$0.00	0.00 %	470	470	0	0.00 %
	4/10/1998	749,027.74	749,027.74	0.00	0.00 %	470	470	0	0.00 %
	Subtotal:	\$1,498,055.46	\$1,498,055.46	\$0.00	0.00 %	940	940	0	0.00 %
8/1/1998 Billing:									
	12/10/1998	\$746,775.23	\$746,537.12	\$238.11	0.03 %	469	468	1	0.21 %
	4/10/1999	746,775.23	746,537.12	238.11	0.03 %	469	468	1	0.21 %
	Subtotal:	\$1,493,550.46	\$1,493,074.24	\$476.22	0.03 %	938	936	2	0.21 %
8/1/1999 Billing:									
	12/10/1999	\$746,202.04	\$745,963.73	\$238.31	0.03 %	400	399	1	0.25 %
	4/10/2000	746,202.06	745,963.75	238.31	0.03 %	400	399	1	0.25 %
	Subtotal:	\$1,492,404.10	\$1,491,927.48	\$476.62	0.03 %	800	798	2	0.25 %
8/1/2000 Billing:									
	12/10/2000	\$744,128.77	\$743,653.59	\$475.18	0.06 %	402	400	2	0.50 %
	4/10/2001	744,125.09	743,649.95	475.14	0.06 %	402	400	2	0.50 %
	Subtotal:	\$1,488,253.86	\$1,487,303.54	\$950.32	0.06 %	804	800	4	0.50 %
8/1/2001 Billing:									
	12/10/2001	\$737,681.24	\$737,207.28	\$473.96	0.06 %	397	395	2	0.50 %
	4/10/2002	737,681.24	678,996.61	58,684.63	7.96 %	397	391	6	1.51 %
	Subtotal:	\$1,475,362.48	\$1,416,203.89	\$59,158.59	4.01 %	794	786	8	1.01 %
8/1/2002 Billing:									
	12/10/2002	\$738,687.92	\$737,146.78	\$1,541.14	0.21 %	397	391	6	1.51 %
	4/10/2003	738,687.92	736,132.12	2,555.80	0.35 %	397	387	10	2.52 %
	Subtotal:	\$1,477,375.84	\$1,473,278.90	\$4,096.94	0.28 %	794	778	16	2.02 %
ID 1	Total:	\$16,676,743.50	\$16,611,584.81	\$65,158.69	0.39 %	11,186	11,154	32	0.29 %
Agency Grand Total:		\$16,676,743.50	\$16,611,584.81	\$65,158.69	0.39 %				



3.6 Teeter Plan Participation & County Revenue Apportionment Schedule

Teeter Plan Participation

District	District Participates in County Teeter Plan?	County Teeter Plan Policies
ID 1	Yes	Under the Teeter plan, the County of Sacramento has the option to purchase all delinquent direct levies. The County decides annually and delivers apportionment for delinquent purchases in early September.

County Revenue Apportionment Schedule

Date	Percentage Apportioned
Mid January	July 1 - December 10 collections
Mid May	December 11 – April 10 collections
Late July	April 11 – June 30 collections

4. 2003/04 LEVY

4.1 Annual Levy Components

The annual levy of special assessment installments is prepared each year by calculating the principal and interest amounts due for each parcel's assessment, plus the parcel's share of administrative expenses offset by any available credits. Pursuant to the California Streets and Highways Code, administrative expenses are identified by consultation with Agency staff to ensure that the District(s) are self-supporting and are not being subsidized by the Agency's General Fund.

NBS will assist the Agency in identifying and recovering the following general costs:

- Agency administrative costs. This includes the value of Agency staff time spent on the administration of the District(s), calculated by using a fully-loaded salary rate that includes benefits and overhead costs. Any Agency expenses that have been incurred, such as copying and mailing expenses, are also recovered as part of this calculation.
- Trustee or Paying Agent costs. Includes the total of Trustee/Paying Agent charges to the Agency for the annual processing of payments to the bondholders, as well as registration and transfer functions that have been performed.
- County Auditor-Controller collection fees. Fees charged by the County Auditor-Controller to place the assessment installments on the tax roll each year are identified and recovered if the charge is subtracted from the amount submitted by NBS. This charge is typically either a flat, per-parcel charge or a percentage charge based on the amount submitted. If the Auditor-Controller adds their charge to the amount submitted, the amount shown on the tax bill will be slightly more than NBS records.
- Arbitrage Rebate calculation costs. Includes all fees and costs associated with the calculation of the District's arbitrage rebate amount in compliance with Internal Revenue Service Arbitrage Rebate Requirements.
- SEC-required disclosure costs. Administrative costs related to compliance with the Securities and Exchange Commission's requirements for continuing disclosure and dissemination of material events occurring within the District(s).
- NBS costs. Also fully recoverable are the costs incurred by NBS in the year-round administration of the District(s), which includes the preparation of the annual levy, ongoing reporting to the Agency, and the tracking of activity within the District(s) such as assessment prepayments, installment payments and parcel changes.

In addition to the costs identified above, NBS provides for the recovery of the following parcel-specific costs (which have been incurred on behalf of specific parcels and cannot be spread to every parcel within the District):

- Delinquency Management charges. The cost of any delinquency management actions taken on behalf of parcels with delinquencies, including the mailing of reminder, demand and/or foreclosure letters, and the work associated with the initiation of judicial foreclosure as required by the bond covenants.
- Manual adjustments. If special circumstances and/or formation errors are discovered, credits and/or charges are made as necessary to the annual assessment installment amount for the specific parcels affected by the situation.

As NBS analyzes the fund balances each year, interest earnings and/or surplus funds that exist may be applied to the annual levy as a credit to reduce each parcel's annual installment. These balances must be closely monitored to prevent violations of IRS arbitrage regulations. The following funds are typically analyzed:

- Construction Fund. Any funds that remain after the project has been completed must be disposed of as required by §10427 and §10427.1 of the California Streets and Highways Code. If, after credits have been made as required by the above-mentioned codes sections, the amount remaining is relatively small, moneys may be applied as a credit to the annual levy amount.
- Reserve Fund. The balance of the Reserve Fund may occasionally exceed the Reserve Fund Requirement as specified in the District's Bond Indenture. This excess can be applied as a credit to the annual levy to reduce each parcel's annual installment.
- Redemption Fund. Similar to the Reserve Fund, interest earnings that accrue in this Fund can be applied as a credit to the annual levy.

4.2 Levy Summary

The following tables summarize the components that make up the 2003/04 levy for the District. Information from the 2002/03 levy is also included for comparison purposes.

Improvement District 1

Description	2003/04 Amount	2002/03 Amount	Increase/ (Decrease)
Principal	\$1,309,982.02	\$1,206,014.88	\$103,967.14
Interest	358,411.97	458,510.96	(100,098.99)
<i>Subtotal</i>	\$1,668,393.99	\$1,664,525.84	\$3,868.15
Agency administrative costs	\$0.00	\$0.00	\$0.00
Agency expenses	0.00	0.00	0.00
Audit fees	1,350.00	1,350.00	0.00
Legal Fees	2,500.00	2,500.00	0.00
Trustee/Paying Agent costs	2,500.00	2,500.00	0.00
County collection fees (1)	1,200.00	1,200.00	0.00
Arbitrage calculation costs	0.00	0.00	0.00
Continuing disclosure report fee	0.00	0.00	0.00
Continuing disclosure report expenses	0.00	0.00	0.00
Administration costs	4,500.00	4,500.00	0.00
Administration expenses	1,000.00	100.00	900.00
Rounding Installments	0.00	0.00	0.00
<i>Subtotal</i>	\$13,050.00	\$12,150.00	\$900.00
Miscellaneous Adjustments	\$159.42	\$0.00	\$159.42
Delinquency Management Charges	93.33	0.00	93.33
Fund Credit (2)	(400,000.00)	(200,000.00)	(200,000.00)
Manual Adjustment	229.14	700.00	(470.86)
<i>Subtotal</i>	(\$399,518.11)	(\$199,300.00)	(\$200,218.11)
Levy Adjustment (2)	\$0.00	\$0.00	\$0.00
Total Annual Levy	\$1,281,925.88	\$1,477,375.84	(\$195,449.96)
County Apportionment (3)	\$1,280,725.88	\$1,476,175.84	(\$195,449.96)
5% Not To Exceed \$16	\$7,187.24	\$6,258.38	\$928.86
Parcels levied	518	397	121

(1) Total Annual Levy reduced by the collection fee taken by the County Auditor-Controller. If the County adds their collection fee to what is submitted, no charge is shown.

(2) To be calculated based on available funds.

(3) Amount to be disbursed by Tax Collector if 100% collection is made.

5. DEBT SERVICE

5.1 Bond Call Summary

District	Bond Issue Amount	Previously Matured Principal	Previously Called Principal	Principal Paid on 9/2/03	Principal Called in 2003	Outstanding Principal(1)
ID 1	\$19,000,000.00	\$10,695,000.00	\$3,465,000.00	\$1,070,000.00	\$0.00	\$3,770,000.00

(1) After September 2, 2003 principal payment has been made.

5.2 Debt Service Schedules

The following pages show the debt service payments and bond calls for the District.

Rancho Murieta Community Services District
County of Sacramento, California
ID 1 - Assessment District No. 1

Current Debt Service Schedule

Bonds Dated: 10/21/1986
 Bonds Issued: \$19,000,000.00

Payment Date	Interest Rate	Balance	Principal	Interest	Payment Total	Annual Total	Call Prem.	Status
3/2/1987	6.0000%	\$19,000,000.00	\$0.00	\$553,855.26	\$553,855.26	\$0.00	3.0000%	Paid
9/2/1987	6.0000	19,000,000.00	0.00	761,022.50	761,022.50	1,314,877.76	3.0000	Paid
3/2/1988	6.0000	19,000,000.00	0.00	761,022.50	761,022.50	0.00	3.0000	Paid
9/2/1988	6.0000	19,000,000.00	480,000.00	761,022.50	1,241,022.50	2,002,045.00	3.0000	Paid
3/2/1989	6.5000	18,520,000.00	0.00	746,622.50	746,622.50	0.00	3.0000	Paid
9/2/1989	6.5000	18,520,000.00	510,000.00	746,622.50	1,256,622.50	2,003,245.00	3.0000	Paid
3/2/1990	7.0000	18,010,000.00	0.00	730,047.50	730,047.50	0.00	3.0000	Paid
9/2/1990	7.0000	18,010,000.00	545,000.00	730,047.50	1,275,047.50	2,005,095.00	3.0000	Paid
3/2/1991	7.2000	17,465,000.00	0.00	710,972.50	710,972.50	0.00	3.0000	Paid
3/2/1991	Bond Call	17,465,000.00	45,000.00	0.00	0.00	0.00	0.0000	N/A
9/2/1991	7.2000	17,420,000.00	580,000.00	709,137.50	1,289,137.50	2,000,110.00	3.0000	Paid
9/2/1991	Bond Call	16,840,000.00	175,000.00	0.00	0.00	0.00	0.0000	N/A
3/2/1992	7.4000	16,665,000.00	0.00	681,168.75	681,168.75	0.00	3.0000	Paid
3/2/1992	Bond Call	16,665,000.00	75,000.00	0.00	0.00	0.00	0.0000	N/A
9/2/1992	7.4000	16,590,000.00	610,000.00	678,135.00	1,288,135.00	1,969,303.75	3.0000	Paid
3/2/1993	7.6000	15,980,000.00	0.00	655,565.00	655,565.00	0.00	3.0000	Paid
3/2/1993	Bond Call	15,980,000.00	265,000.00	0.00	0.00	0.00	0.0000	N/A
9/2/1993	7.6000	15,715,000.00	640,000.00	644,763.75	1,284,763.75	1,940,328.75	3.0000	Paid
3/2/1994	7.7500	15,075,000.00	0.00	620,443.75	620,443.75	0.00	3.0000	Paid
3/2/1994	Bond Call	15,075,000.00	105,000.00	0.00	0.00	0.00	0.0000	N/A
9/2/1994	7.7500	14,970,000.00	685,000.00	616,142.50	1,301,142.50	1,921,586.25	3.0000	Paid
3/2/1995	8.0000	14,285,000.00	0.00	589,598.75	589,598.75	0.00	3.0000	Paid
3/2/1995	Bond Call	14,285,000.00	110,000.00	0.00	0.00	0.00	0.0000	N/A
9/2/1995	8.0000	14,175,000.00	735,000.00	584,985.00	1,319,985.00	1,909,583.75	3.0000	Paid
9/2/1995	Bond Call	13,440,000.00	100,000.00	0.00	0.00	0.00	0.0000	N/A
3/2/1996	8.0000	13,340,000.00	0.00	551,416.25	551,416.25	0.00	3.0000	Paid
3/2/1996	Bond Call	13,340,000.00	75,000.00	0.00	0.00	0.00	0.0000	N/A
9/2/1996	8.0000	13,265,000.00	790,000.00	548,313.75	1,338,313.75	1,889,730.00	3.0000	Paid
9/2/1996	Bond Call	12,475,000.00	1,285,000.00	0.00	0.00	0.00	0.0000	N/A
3/2/1997	8.1000	11,190,000.00	0.00	463,487.50	463,487.50	0.00	3.0000	Paid
9/2/1997	8.1000	11,190,000.00	765,000.00	463,487.50	1,228,487.50	1,691,975.00	3.0000	Paid
3/2/1998	8.1000	10,425,000.00	0.00	432,505.00	432,505.00	0.00	3.0000	Paid
3/2/1998	Bond Call	10,425,000.00	1,150,000.00	0.00	0.00	0.00	0.0000	N/A
9/2/1998	8.1000	9,275,000.00	825,000.00	384,692.50	1,209,692.50	1,642,197.50	3.0000	Paid
3/2/1999	8.2000	8,450,000.00	0.00	351,280.00	351,280.00	0.00	3.0000	Paid
9/2/1999	8.2000	8,450,000.00	790,000.00	351,280.00	1,141,280.00	1,492,560.00	3.0000	Paid
9/2/1999	Bond Call	7,660,000.00	80,000.00	0.00	0.00	0.00	0.0000	N/A
3/2/2000	8.2000	7,580,000.00	0.00	315,560.00	315,560.00	0.00	3.0000	Paid
9/2/2000	8.2000	7,580,000.00	840,000.00	315,560.00	1,155,560.00	1,471,120.00	3.0000	Paid
3/2/2001	8.2500	6,740,000.00	0.00	281,120.00	281,120.00	0.00	3.0000	Paid
9/2/2001	8.2500	6,740,000.00	915,000.00	281,120.00	1,196,120.00	1,477,240.00	3.0000	Paid
3/2/2002	8.2500	5,825,000.00	0.00	243,376.25	243,376.25	0.00	3.0000	Paid



Rancho Murieta Community Services District
County of Sacramento, California
ID 1 - Assessment District No. 1

Current Debt Service Schedule

Bonds Dated: 10/21/1986
 Bonds Issued: \$19,000,000.00

Payment Date	Interest Rate	Balance	Principal	Interest	Payment Total	Annual Total	Call Prem.	Status
9/2/2002	8.2500	\$5,825,000.00	985,000.00	243,376.25	1,228,376.25	1,471,752.50	3.0000	Paid
3/2/2003	8.3000	4,840,000.00	0.00	202,745.00	202,745.00	0.00	3.0000	Paid
9/2/2003	8.3000	4,840,000.00	1,070,000.00	202,745.00	1,272,745.00	1,475,490.00	3.0000	Paid
3/2/2004	8.4000	3,770,000.00	0.00	158,340.00	158,340.00	0.00	3.0000	Unpaid
9/2/2004	8.4000	3,770,000.00	1,160,000.00	158,340.00	1,318,340.00	1,476,680.00	3.0000	Unpaid
3/2/2005	8.4000	2,610,000.00	0.00	109,620.00	109,620.00	0.00	3.0000	Unpaid
9/2/2005	8.4000	2,610,000.00	1,250,000.00	109,620.00	1,359,620.00	1,469,240.00	3.0000	Unpaid
3/2/2006	8.4000	1,360,000.00	0.00	57,120.00	57,120.00	0.00	3.0000	Unpaid
9/2/2006	8.4000	1,360,000.00	1,360,000.00	57,120.00	1,417,120.00	1,474,240.00	3.0000	Unpaid
Grand Total:			\$19,000,000.00	\$18,563,400.26	\$34,098,400.26	\$34,098,400.26		



The tables below itemize the amount of bonds called from each maturity for each call date.

Call Date	Maturity Date	Amount Called
Mar 02, 1991	Sep 02, 1995	\$5,000.00
	Sep 02, 1996	5,000.00
	Sep 02, 1997	5,000.00
	Sep 02, 1998	5,000.00
	Sep 02, 1999	5,000.00
	Sep 02, 2000	5,000.00
	Sep 02, 2001	5,000.00
	Sep 02, 2002	5,000.00
	Sep 02, 2003	<u>5,000.00</u>
	Total:	\$45,000.00

Call Date	Maturity Date	Amount Called
Sep 02, 1991	Sep 02, 1992	\$10,000.00
	Sep 02, 1993	10,000.00
	Sep 02, 1994	10,000.00
	Sep 02, 1995	10,000.00
	Sep 02, 1996	10,000.00
	Sep 02, 1997	15,000.00
	Sep 02, 1998	15,000.00
	Sep 02, 1999	15,000.00
	Sep 02, 2000	15,000.00
	Sep 02, 2001	15,000.00
	Sep 02, 2002	10,000.00
	Sep 02, 2003	10,000.00
	Sep 02, 2004	10,000.00
	Sep 02, 2005	10,000.00
	Sep 02, 2006	<u>10,000.00</u>
	Total:	\$175,000.00

Call Date	Maturity Date	Amount Called
Mar 02, 1992.	Sep 02, 1992	\$5,000.00
	Sep 02, 1993	5,000.00
	Sep 02, 1994	5,000.00
	Sep 02, 1995	5,000.00
	Sep 02, 1996	5,000.00
	Sep 02, 1997	5,000.00
	Sep 02, 1998	5,000.00
	Sep 02, 1999	5,000.00
	Sep 02, 2000	5,000.00
	Sep 02, 2001	5,000.00
	Sep 02, 2002	5,000.00
	Sep 02, 2003	5,000.00
	Sep 02, 2004	5,000.00
	Sep 02, 2005	5,000.00
Sep 02, 2006	<u>5,000.00</u>	
	Total:	\$75,000.00

Call Date	Maturity Date	Amount Called
Mar 02, 1993	Sep 02, 1993	\$15,000.00
	Sep 02, 1994	15,000.00
	Sep 02, 1995	20,000.00
	Sep 02, 1996	20,000.00
	Sep 02, 1997	20,000.00
	Sep 02, 1998	20,000.00
	Sep 02, 1999	20,000.00
	Sep 02, 2000	20,000.00
	Sep 02, 2001	20,000.00
	Sep 02, 2002	20,000.00
	Sep 02, 2003	20,000.00
	Sep 02, 2004	20,000.00
	Sep 02, 2005	20,000.00
	Sep 02, 2006	<u>15,000.00</u>
	Total:	\$265,000.00

Call Date	Maturity Date	Amount Called
Mar 02, 1994	Sep 02, 1994	\$5,000.00
	Sep 02, 1995	5,000.00
	Sep 02, 1996	5,000.00
	Sep 02, 1997	10,000.00
	Sep 02, 1998	10,000.00
	Sep 02, 1999	10,000.00
	Sep 02, 2000	10,000.00
	Sep 02, 2001	10,000.00
	Sep 02, 2002	10,000.00
	Sep 02, 2003	15,000.00
	Sep 02, 2004	5,000.00
	Sep 02, 2005	5,000.00
	Sep 02, 2006	<u>5,000.00</u>
Total:		\$105,000.00

Call Date	Maturity Date	Amount Called
Mar 02, 1995	Sep 02, 2002	\$5,000.00
	Sep 02, 2003	5,000.00
	Sep 02, 2004	25,000.00
	Sep 02, 2005	30,000.00
	Sep 02, 2006	<u>45,000.00</u>
Total:		\$110,000.00

Call Date	Maturity Date	Amount Called
Sep 02, 1995	Sep 02, 2000	\$5,000.00
	Sep 02, 2001	10,000.00
	Sep 02, 2002	15,000.00
	Sep 02, 2003	15,000.00
	Sep 02, 2004	20,000.00
	Sep 02, 2005	20,000.00
	Sep 02, 2006	<u>15,000.00</u>
Total:		\$100,000.00

Call Date	Maturity Date	Amount Called
Mar 02, 1996	Sep 02, 1996	\$5,000.00
	Sep 02, 1998	5,000.00
	Sep 02, 1999	5,000.00
	Sep 02, 2000	5,000.00
	Sep 02, 2001	10,000.00
	Sep 02, 2002	10,000.00
	Sep 02, 2003	10,000.00
	Sep 02, 2004	5,000.00
	Sep 02, 2005	10,000.00
	Sep 02, 2006	<u>10,000.00</u>
	Total:	\$75,000.00

Call Date	Maturity Date	Amount Called
Sep 02, 1996	Sep 02, 1997	\$85,000.00
	Sep 02, 1998	95,000.00
	Sep 02, 1999	105,000.00
	Sep 02, 2000	115,000.00
	Sep 02, 2001	115,000.00
	Sep 02, 2002	130,000.00
	Sep 02, 2003	140,000.00
	Sep 02, 2004	155,000.00
	Sep 02, 2005	165,000.00
	Sep 02, 2006	<u>180,000.00</u>
	Total:	\$1,285,000.00

Call Date	Maturity Date	Amount Called
Mar 02, 1998	Sep 02, 1999	\$105,000.00
	Sep 02, 2000	115,000.00
	Sep 02, 2001	125,000.00
	Sep 02, 2002	135,000.00
	Sep 02, 2003	145,000.00
	Sep 02, 2004	160,000.00
	Sep 02, 2005	175,000.00
	Sep 02, 2006	<u>190,000.00</u>
	Total:	\$1,150,000.00

Call Date	Maturity Date	Amount Called
Sep 02, 1999	Sep 02, 2000	\$10,000.00
	Sep 02, 2001	10,000.00
	Sep 02, 2002	10,000.00
	Sep 02, 2003	10,000.00
	Sep 02, 2004	10,000.00
	Sep 02, 2005	15,000.00
	Sep 02, 2006	<u>15,000.00</u>
	Total:	\$80,000.00

6. BACKGROUND INFORMATION

6.1 Project Description and Method of Spread

Improvement District No. 1

Project Description

The Project to be financed with Bond proceeds consists of the acquisition of certain existing facilities including improvements and refurbishing as necessary and the construction of Phase 2, with certain additions, of the water treatment plant. The Engineer's report lists the following facilities to be acquired and constructed (amounts include repairs and additions in progress): Rancho Murieta Wastewater Treatment Facility, Wastewater Pump Station at Murieta Drive and Highway 16, Raw Sewage Force Main, Granlees Raw water Pump Station Forebay, Granlees-Calero Raw Water Transmission Pipeline, and Calero Dam Raw Water Delivery System.

Method of Spread

Assessments for the Improvement District No. 1 shall be based on water usage and sewage generation for the various types of parcels. All existing and future single-family residential lots will be assumed to have the same water usage and sewage generation per lot. Other land uses (e.g. commercial, apartment, school, etc.) will be evaluated for the usage for each parcel. All usages will be expressed in gallons per day (gpd) representing the average daily use (water and sewage) for each parcel.

The spread of assessment must consider the benefit that each parcel receives from each of the project cost components. Benefit will be apportioned to each parcel on the basis of: 1) Its water demand (gpd) for the water related facilities (raw water and treated water) and, 2) its generation of sewage (gpd) for the sewage system.

Since the various parcels within the assessment district comprise various land uses, the following criteria will be used as the basis of the spread of assessment:

<u>Proposed Land Use</u>	<u>Water Demand</u>	<u>Sewage Flow</u>
Single Family	605 gpd/unit	300 gpd/unit
Apartments	156 gpd/unit	120 gpd/unit
Motel (Lodge)	200 gpd/unit	180 gpd/unit
Hotel	350 gpd/room	300 gpd/unit
Commercial (Retail)	0.18 gpd/sq.ft.	0.15 gpd/sq.ft.
School	15 gpd/student	13 gpd/student
Light Industry	20 gpd/person	18 gpd/person
Office	0.08 gpd/sq.ft.	0.07 gpd/sq.ft.

6.2 Assessment Diagrams

IMPROVEMENT DISTRICT 1

Recordation Information not available.

The following pages show the District's Assessment Diagram.

ASSESSMENT DIAGRAM RANCHO MURIETA COMMUNITY SERVICES DISTRICT IMPROVEMENT DISTRICT NO. 1

COUNTY OF SACRAMENTO, CALIFORNIA
RAYMOND VAIL & ASSOCIATES

PREPARED AND SUBMITTED BY THE ENGINEER OF WORK THIS _____ DAY
OF _____, 1988.

ENGINEER OF WORK
RAYMOND VAIL AND ASSOCIATES
BY DUANE T. THOMPSON

FILED IN THE OFFICE OF THE SECRETARY OF THE RANCHO MURIETA
COMMUNITY SERVICES DISTRICT, SACRAMENTO COUNTY, CALIFORNIA,
THIS _____ DAY OF _____, 1988.

SECRETARY, RANCHO MURIETA
COMMUNITY SERVICES DISTRICT,
SACRAMENTO COUNTY, CALIFORNIA

RECORDED IN THE OFFICE OF THE DISTRICT MANAGER OF THE RANCHO
MURIETA COMMUNITY SERVICES DISTRICT, SACRAMENTO COUNTY,
CALIFORNIA, THIS _____ DAY OF _____, 1988.

DISTRICT MANAGER, RANCHO MURIETA
COMMUNITY SERVICES DISTRICT,
SACRAMENTO COUNTY, CALIFORNIA

AN ASSESSMENT WAS LEVIED BY THE BOARD OF DIRECTORS OF THE
RANCHO MURIETA COMMUNITY SERVICES DISTRICT, SACRAMENTO
COUNTY, CALIFORNIA, ON THE LOTS, PIECES, AND PARCELS OF LAND
SHOWN ON THIS ASSESSMENT DIAGRAM. SAID ASSESSMENT ASSESSMENT
DIAGRAM AND THE ASSESSMENT ROLL WERE RECORDED IN THE OFFICE
OF THE DISTRICT MANAGER OF THE RANCHO MURIETA COMMUNITY SERVICES
DISTRICT ON THE _____ DAY OF _____, 1988. REFERENCE IS MADE
TO THE ASSESSMENT ROLL RECORDED IN THE OFFICE OF THE DISTRICT
MANAGER FOR THE EXACT AMOUNT OF EACH ASSESSMENT LEVIED
AGAINST EACH PARCEL OF LAND SHOWN ON THIS ASSESSMENT DIAGRAM.

SECRETARY, RANCHO MURIETA COMMUNITY
SERVICES DISTRICT, SACRAMENTO
COUNTY, CALIFORNIA

FILED THIS _____ DAY OF _____, 1988 AT THE HOUR OF _____
O'CLOCK _____ M. IN BOOK _____ OF MAPS OF ASSESSMENT
DISTRICTS, AT _____ IN THE OFFICE OF THE COUNTY RECORDER
OF THE COUNTY OF SACRAMENTO, STATE OF CALIFORNIA.

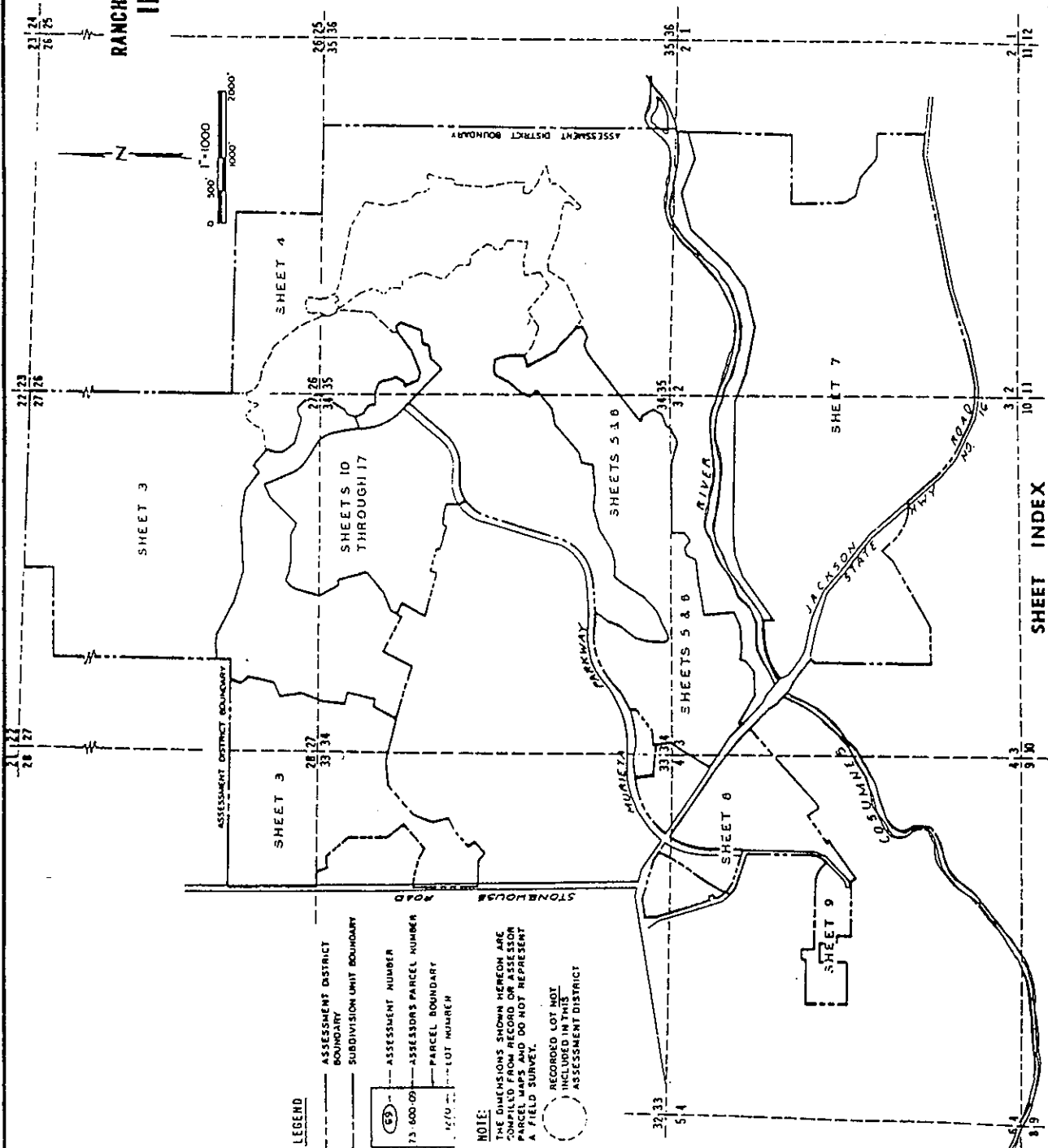
COUNTY RECORDER, SACRAMENTO COUNTY,
CALIFORNIA

FILED IN THE OFFICE OF THE DIRECTOR OF PUBLIC WORKS OF THE
COUNTY OF SACRAMENTO, STATE OF CALIFORNIA, THIS _____ DAY OF
_____, 1988.

DIRECTOR OF PUBLIC WORKS
SACRAMENTO COUNTY, CALIFORNIA

SHEET 1 OF 17

4/2/1988

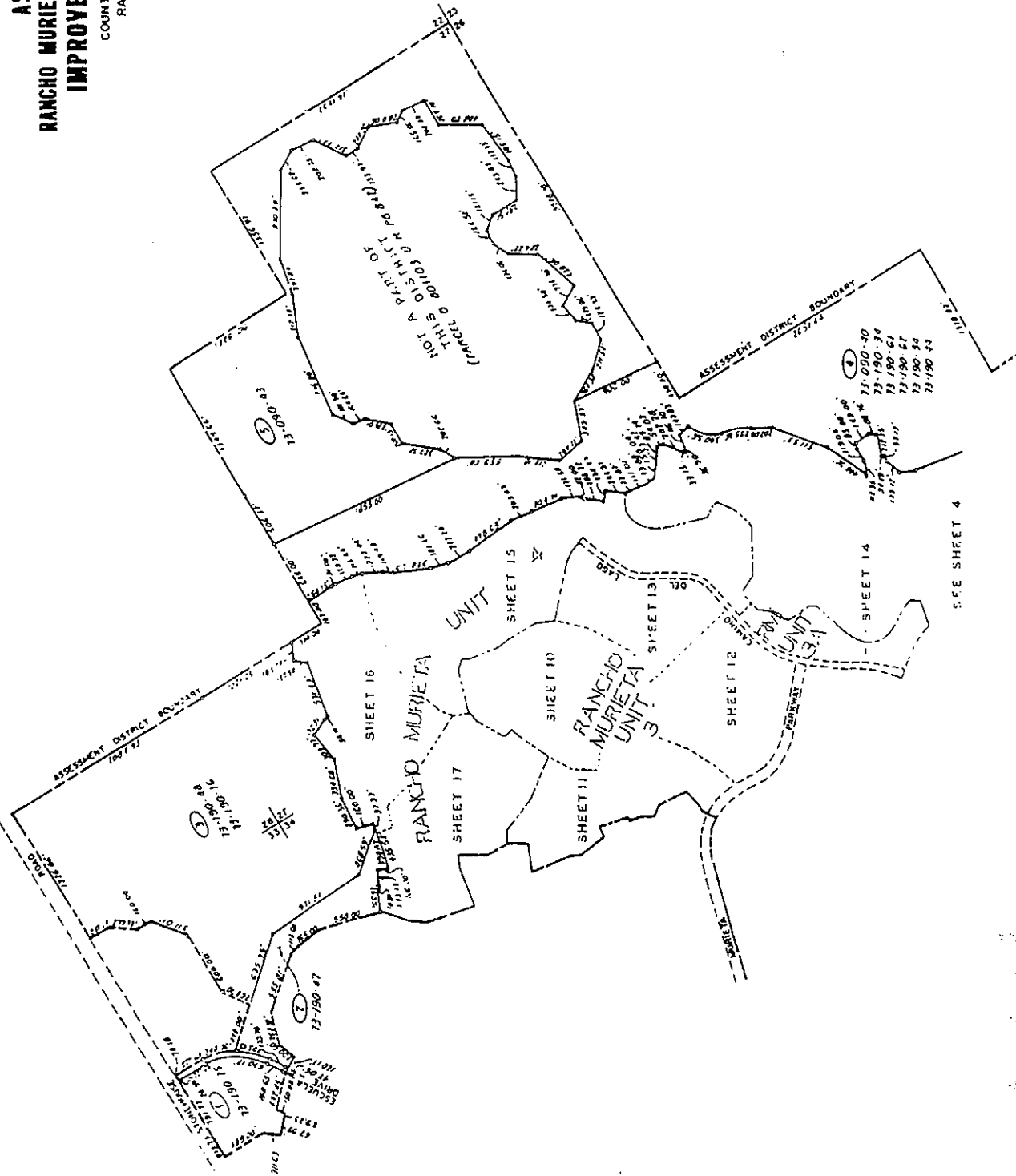
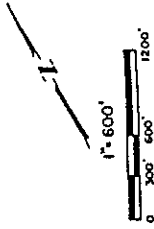


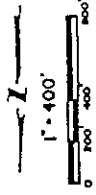
SHEET INDEX

SHEET 1 OF 17

**ASSESSMENT DIAGRAM
RANCHO MURIETA COMMUNITY SERVICES DISTRICT
IMPROVEMENT DISTRICT NO. 1**

COUNTY OF SACRAMENTO, CALIFORNIA
RAYMOND VAIL & ASSOCIATES





SEE SHEET 7

SEE SHEET 5

SEE SHEET 5

SEE SHEET 3

SEE SHEET 12

ASSESSMENT DISTRICT BOUNDARY 1717.51'

ASSESSMENT DISTRICT BOUNDARY 7251.44'

- 73-090-40
- 73-190-36
- 73-190-61
- 73-190-62
- 73-190-54
- 73-190-44

NOT A PART OF THIS DISTRICT (PARCEL 5, 12, 17, 47)

NOT A PART OF THIS DISTRICT (PARCEL 10, 106)

NOT A PART OF THIS DISTRICT (PARCEL 9, 21, 24, 41)

COSUMES RIVER

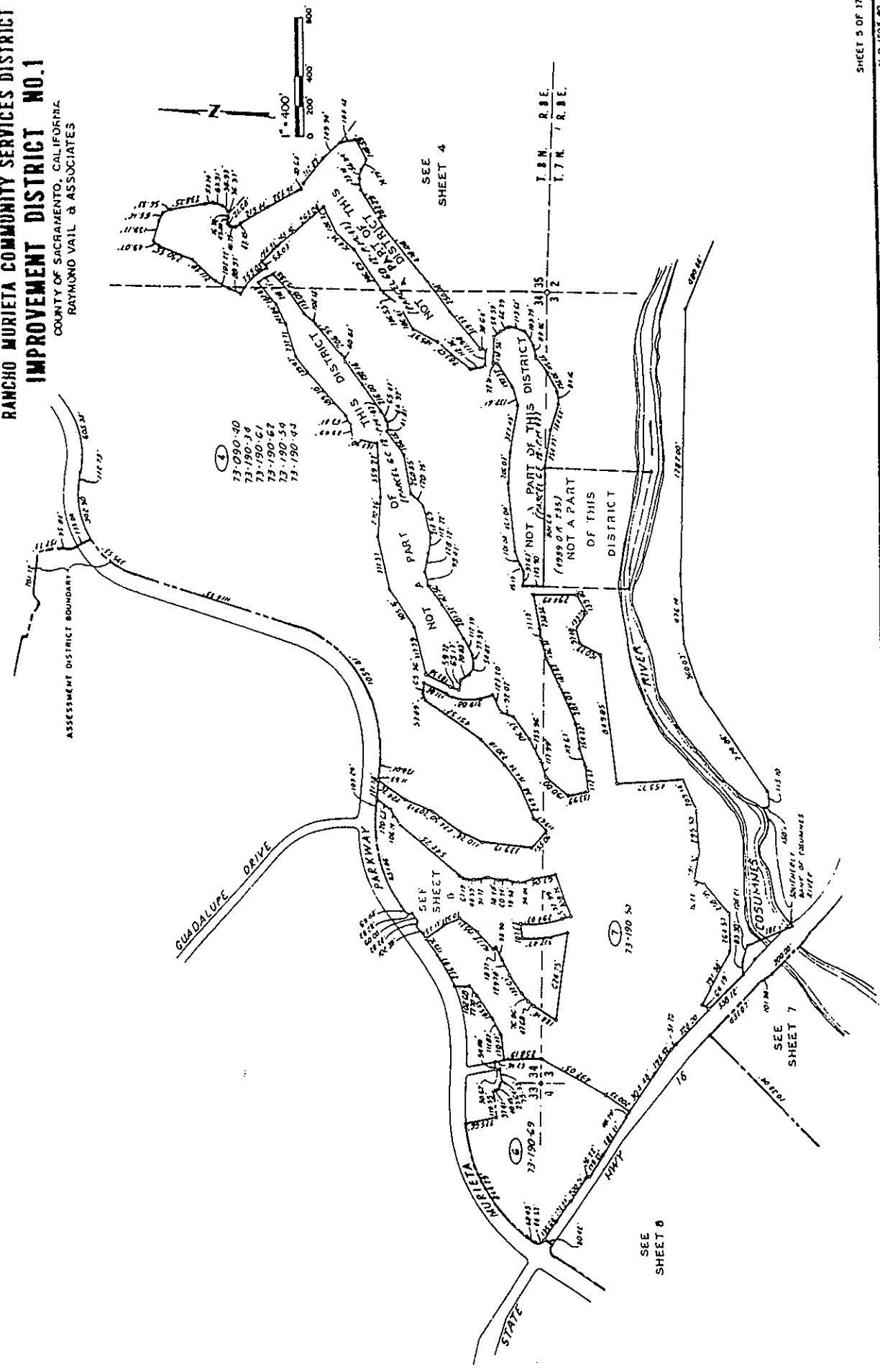
ASSESSMENT DIAGRAM
RANCHO MURIETA COMMUNITY SERVICES DISTRICT
IMPROVEMENT DISTRICT NO. 1

COUNTY OF SACRAMENTO, CALIFORNIA
 RAYMOND VAIL & ASSOCIATES

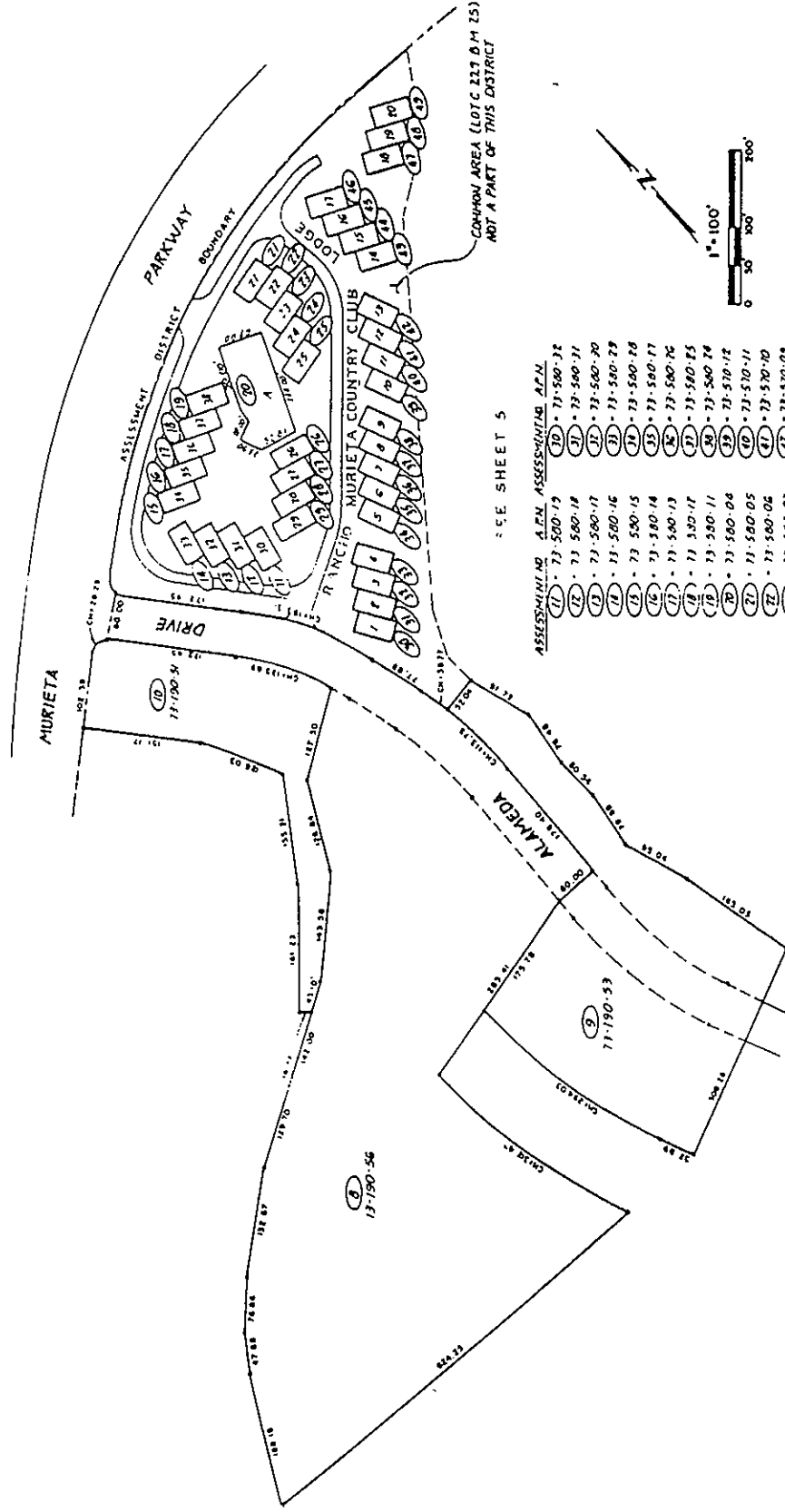
ASSESSMENT DIAGRAM
RANCHO MURIETA COMMUNITY SERVICES DISTRICT
IMPROVEMENT DISTRICT NO. 1

COUNTY OF SACRAMENTO, CALIFORNIA
 RAYMUNO VAIL & ASSOCIATES

SEE SHEET II



ASSESSMENT DIAGRAM
RANCHO MURIETA COMMUNITY SERVICES DISTRICT
IMPROVEMENT DISTRICT NO. 1
 COUNTY OF SACRAMENTO, CALIFORNIA
 RAYMOND VAIL & ASSOCIATES

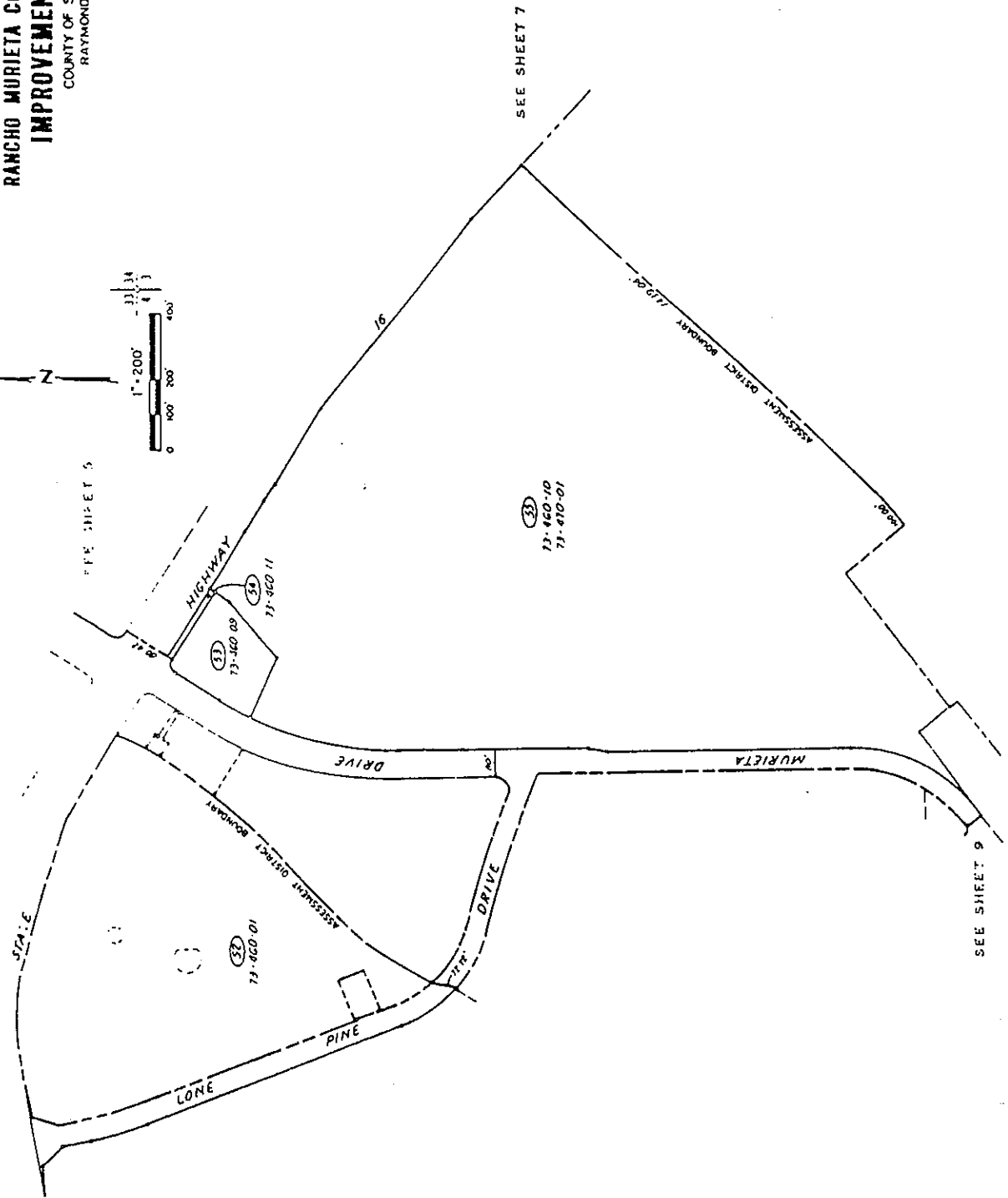
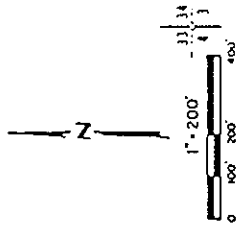


SEE SHEET 5

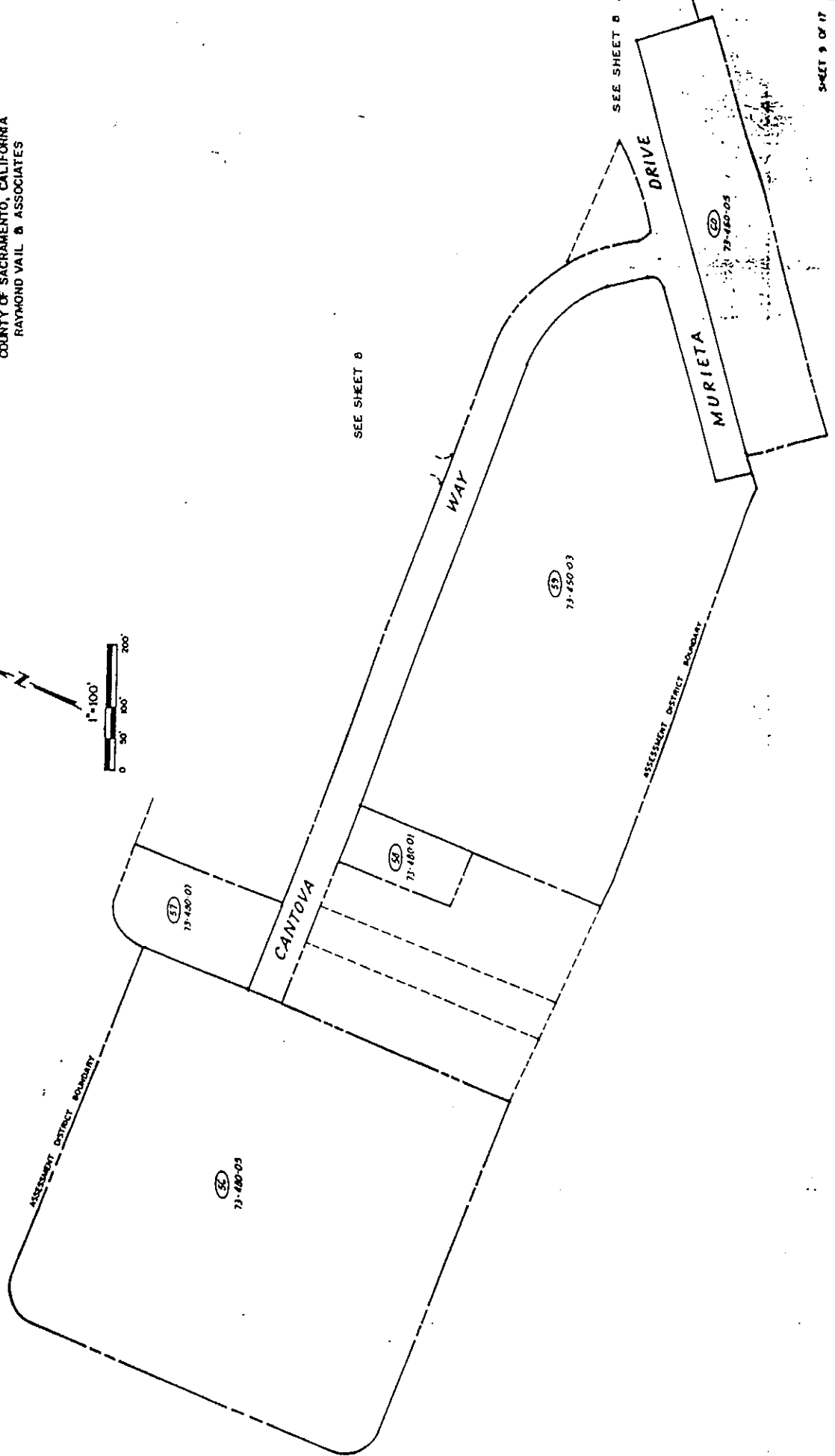
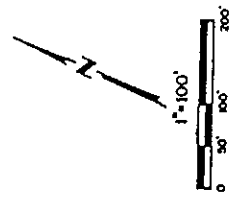
ASSESSMENT NO. A.P.N. ASSESSMENT A.P.N.

(1) - 73-500-13	(10) - 73-500-38
(2) - 73-500-14	(11) - 73-500-39
(3) - 73-500-15	(12) - 73-500-40
(4) - 73-500-16	(13) - 73-500-41
(5) - 73-500-17	(14) - 73-500-42
(6) - 73-500-18	(15) - 73-500-43
(7) - 73-500-19	(16) - 73-500-44
(8) - 73-500-20	(17) - 73-500-45
(9) - 73-500-21	(18) - 73-500-46
(19) - 73-500-22	(19) - 73-500-47
(20) - 73-500-23	(20) - 73-500-48
(21) - 73-500-24	(21) - 73-500-49
(22) - 73-500-25	(22) - 73-500-50
(23) - 73-500-26	(23) - 73-500-51
(24) - 73-500-27	(24) - 73-500-52
(25) - 73-500-28	(25) - 73-500-53
(26) - 73-500-29	(26) - 73-500-54
(27) - 73-500-30	(27) - 73-500-55
(28) - 73-500-31	(28) - 73-500-56
(29) - 73-500-32	(29) - 73-500-57
(30) - 73-500-33	(30) - 73-500-58
(31) - 73-500-34	(31) - 73-500-59
(32) - 73-500-35	(32) - 73-500-60
(33) - 73-500-36	(33) - 73-500-61
(34) - 73-500-37	(34) - 73-500-62
(35) - 73-500-38	(35) - 73-500-63
(36) - 73-500-39	(36) - 73-500-64
(37) - 73-500-40	(37) - 73-500-65
(38) - 73-500-41	(38) - 73-500-66
(39) - 73-500-42	(39) - 73-500-67
(40) - 73-500-43	(40) - 73-500-68
(41) - 73-500-44	(41) - 73-500-69
(42) - 73-500-45	(42) - 73-500-70
(43) - 73-500-46	(43) - 73-500-71
(44) - 73-500-47	(44) - 73-500-72
(45) - 73-500-48	(45) - 73-500-73
(46) - 73-500-49	(46) - 73-500-74
(47) - 73-500-50	(47) - 73-500-75
(48) - 73-500-51	(48) - 73-500-76
(49) - 73-500-52	(49) - 73-500-77
(50) - 73-500-53	(50) - 73-500-78
(51) - 73-500-54	(51) - 73-500-79
(52) - 73-500-55	(52) - 73-500-80
(53) - 73-500-56	(53) - 73-500-81
(54) - 73-500-57	(54) - 73-500-82
(55) - 73-500-58	(55) - 73-500-83
(56) - 73-500-59	(56) - 73-500-84
(57) - 73-500-60	(57) - 73-500-85
(58) - 73-500-61	(58) - 73-500-86
(59) - 73-500-62	(59) - 73-500-87
(60) - 73-500-63	(60) - 73-500-88
(61) - 73-500-64	(61) - 73-500-89
(62) - 73-500-65	(62) - 73-500-90
(63) - 73-500-66	(63) - 73-500-91
(64) - 73-500-67	(64) - 73-500-92
(65) - 73-500-68	(65) - 73-500-93
(66) - 73-500-69	(66) - 73-500-94
(67) - 73-500-70	(67) - 73-500-95
(68) - 73-500-71	(68) - 73-500-96
(69) - 73-500-72	(69) - 73-500-97
(70) - 73-500-73	(70) - 73-500-98
(71) - 73-500-74	(71) - 73-500-99
(72) - 73-500-75	(72) - 73-500-100

ASSESSMENT DIAGRAM
 RANCHO MURIETA COMMUNITY SERVICES DISTRICT
 IMPROVEMENT DISTRICT NO. 1
 COUNTY OF SACRAMENTO, CALIFORNIA
 RAYMOND VAIL & ASSOCIATES



ASSESSMENT DIAGRAM
RANCHO MURIETA COMMUNITY SERVICES DISTRICT
IMPROVEMENT DISTRICT NO. 1
COUNTY OF SACRAMENTO, CALIFORNIA
RAYMOND VAIL & ASSOCIATES

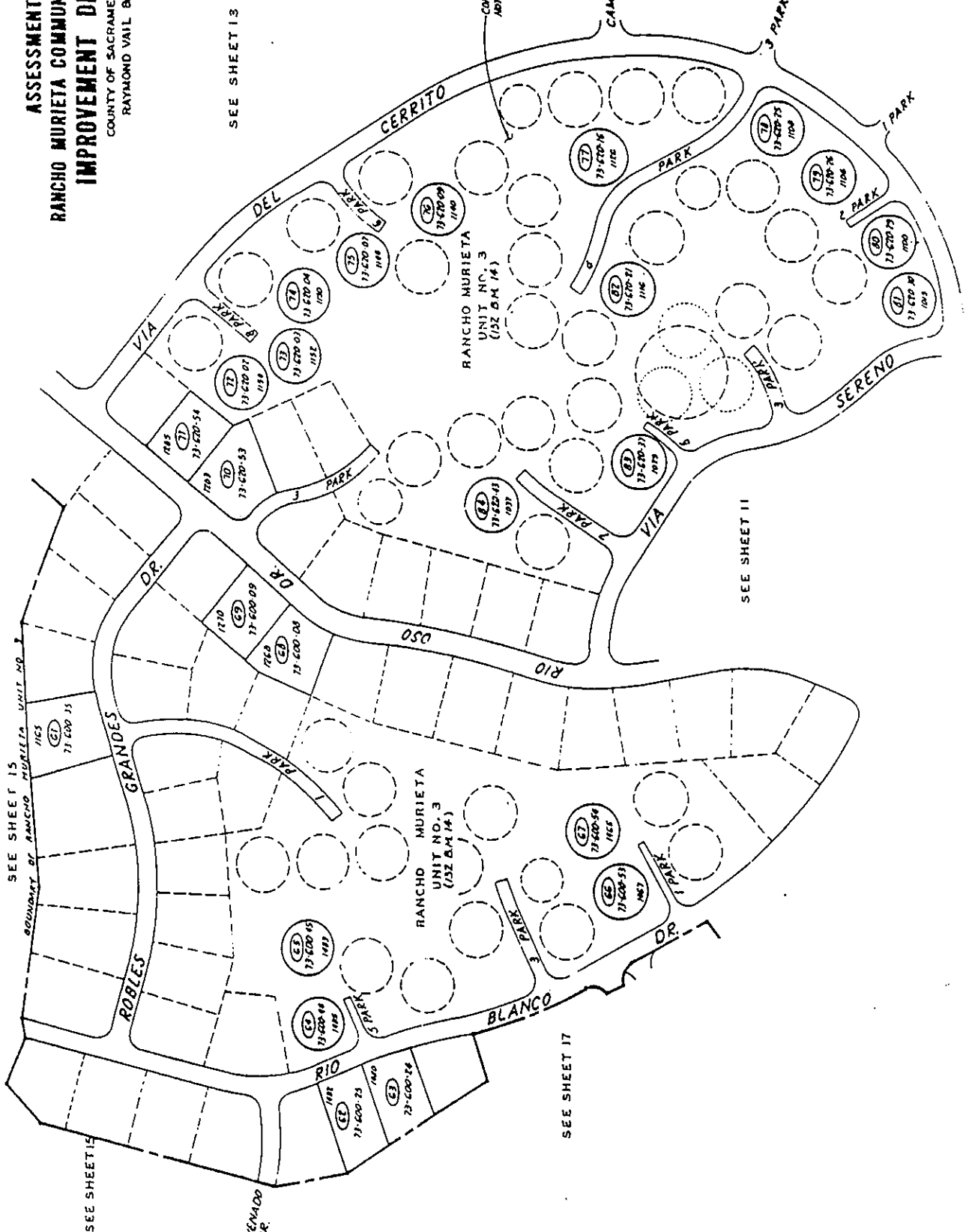
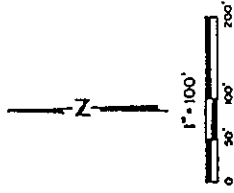


SEE SHEET 8

SEE SHEET 8

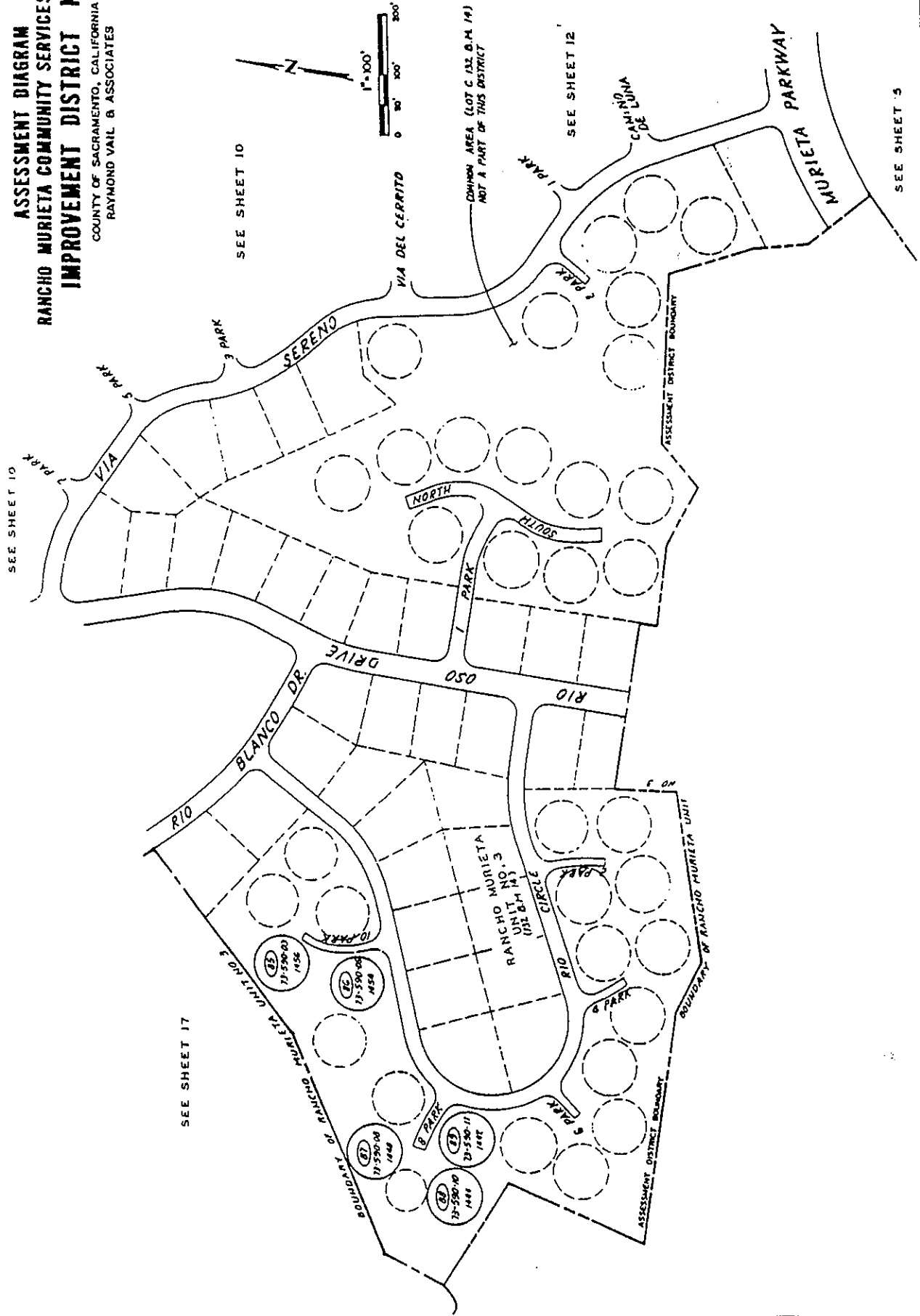
ASSESSMENT DIAGRAM
RANCHO MURIETA COMMUNITY SERVICES DISTRICT
IMPROVEMENT DISTRICT NO. 1

COUNTY OF SACRAMENTO, CALIFORNIA
 RAYMOND VAIL & ASSOCIATES



ASSESSMENT DIAGRAM
RANCHO MURIETA COMMUNITY SERVICES DISTRICT
IMPROVEMENT DISTRICT NO. 1

COUNTY OF SACRAMENTO, CALIFORNIA
 RAYMOND VAIL & ASSOCIATES



SEE SHEET 10

SEE SHEET 11

SEE SHEET 12

SEE SHEET 13

**ASSESSMENT DIAGRAM
 RANCHO MURIETA COMMUNITY SERVICES DISTRICT
 IMPROVEMENT DISTRICT NO. 1**
 COUNTY OF SACRAMENTO, CALIFORNIA
 RAYMOND VAIL & ASSOCIATES

SHEET 12 OF 17
 M.C. 7705.00

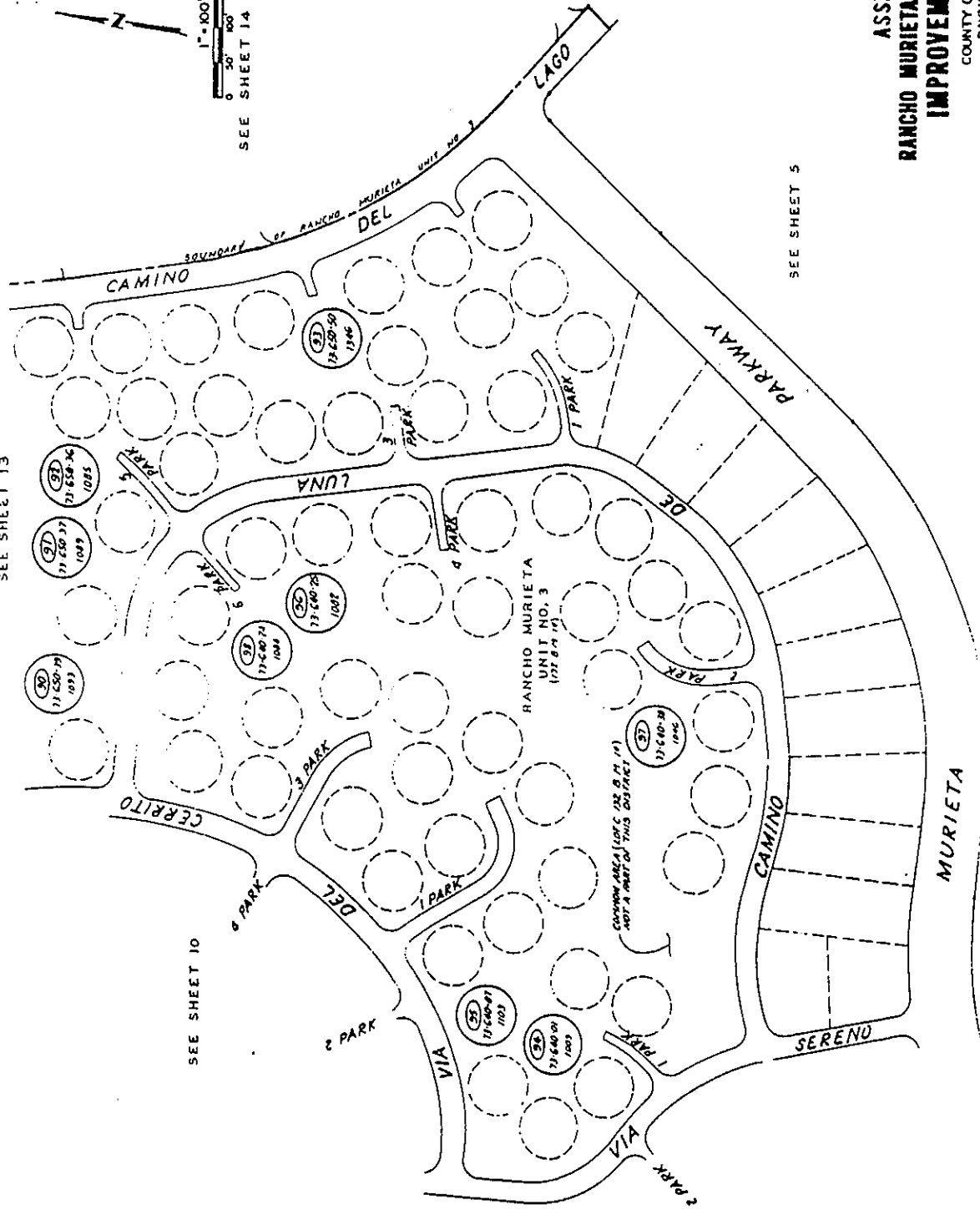
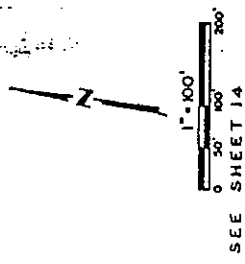
SEE SHEET 14

SEE SHEET 5

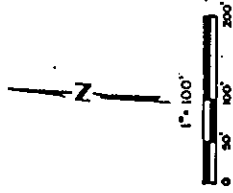
SEE SHEET 10

SEE SHEET 13

SEE SHEET 11

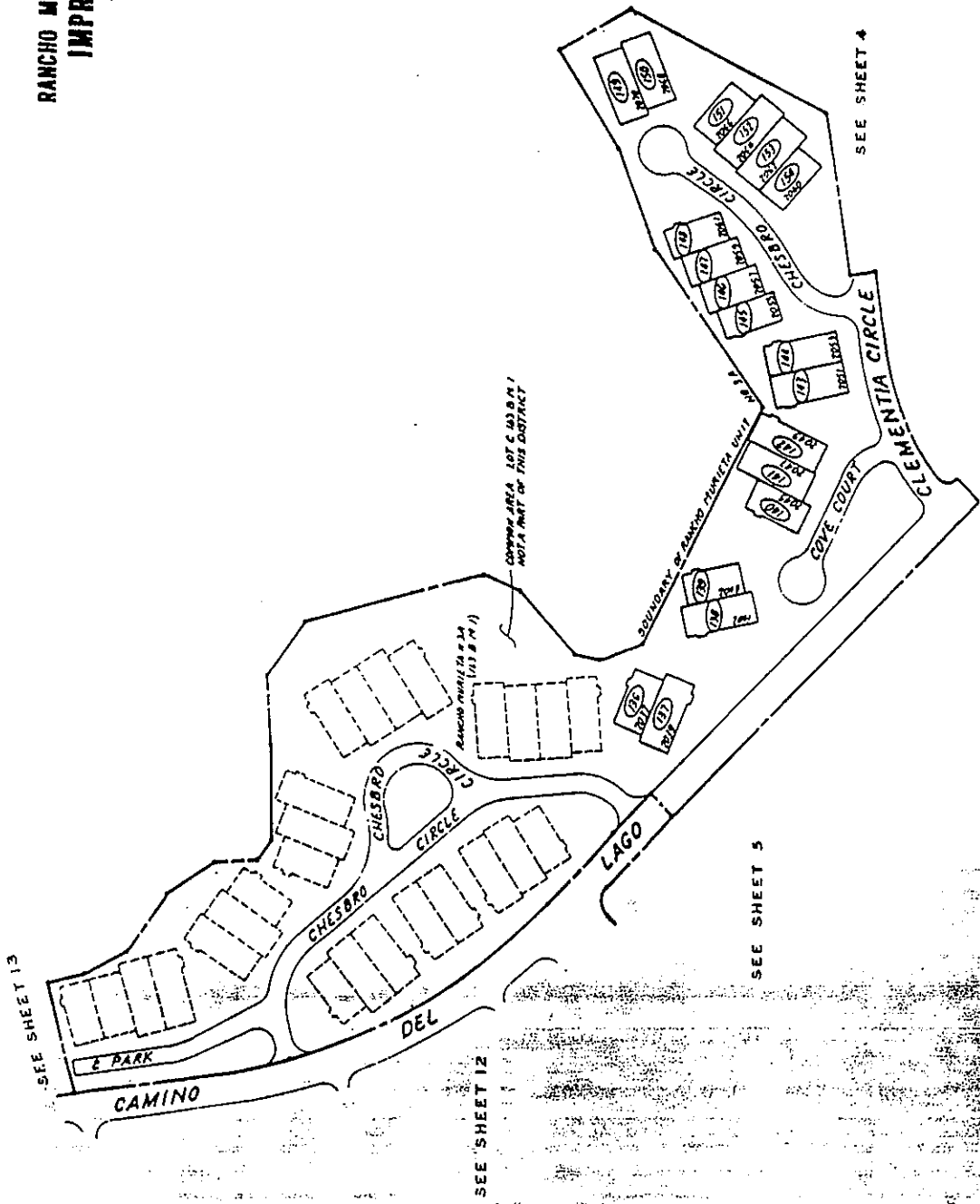


ASSESSMENT DIAGRAM
RANCHO MURIETA COMMUNITY SERVICES DISTRICT
IMPROVEMENT DISTRICT NO. 1
 COUNTY OF SACRAMENTO, CALIFORNIA
 RAYMOND VAIL & ASSOCIATES



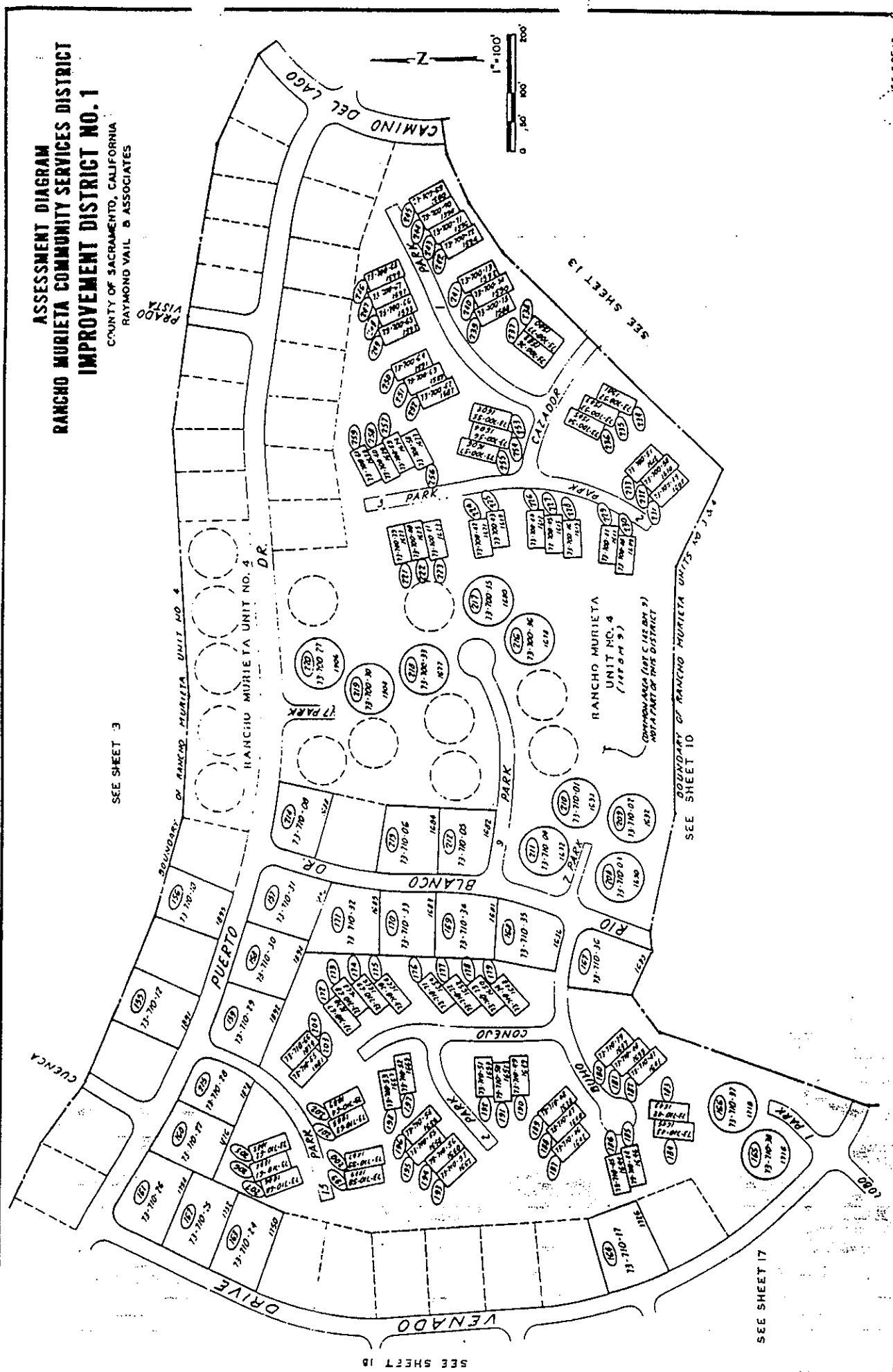
ASSESSMENT NO. ALGN.

(125)	-	73-770-05
(126)	-	73-770-06
(127)	-	73-770-07
(128)	-	73-770-08
(129)	-	73-770-09
(130)	-	73-770-10
(131)	-	73-770-11
(132)	-	73-770-12
(133)	-	73-770-13
(134)	-	73-770-14
(135)	-	73-770-15
(136)	-	73-770-16
(137)	-	73-770-17
(138)	-	73-770-18
(139)	-	73-770-19
(140)	-	73-770-20
(141)	-	73-770-21
(142)	-	73-770-22
(143)	-	73-770-23
(144)	-	73-770-24
(145)	-	73-770-25
(146)	-	73-770-26
(147)	-	73-770-27
(148)	-	73-770-28
(149)	-	73-770-29
(150)	-	73-770-30
(151)	-	73-770-31
(152)	-	73-770-32
(153)	-	73-770-33
(154)	-	73-770-34
(155)	-	73-770-35
(156)	-	73-770-36
(157)	-	73-770-37
(158)	-	73-770-38
(159)	-	73-770-39
(160)	-	73-770-40
(161)	-	73-770-41
(162)	-	73-770-42
(163)	-	73-770-43
(164)	-	73-770-44
(165)	-	73-770-45
(166)	-	73-770-46
(167)	-	73-770-47
(168)	-	73-770-48
(169)	-	73-770-49
(170)	-	73-770-50
(171)	-	73-770-51
(172)	-	73-770-52
(173)	-	73-770-53
(174)	-	73-770-54
(175)	-	73-770-55
(176)	-	73-770-56
(177)	-	73-770-57
(178)	-	73-770-58
(179)	-	73-770-59
(180)	-	73-770-60
(181)	-	73-770-61
(182)	-	73-770-62
(183)	-	73-770-63
(184)	-	73-770-64
(185)	-	73-770-65
(186)	-	73-770-66
(187)	-	73-770-67
(188)	-	73-770-68
(189)	-	73-770-69
(190)	-	73-770-70
(191)	-	73-770-71
(192)	-	73-770-72
(193)	-	73-770-73
(194)	-	73-770-74
(195)	-	73-770-75
(196)	-	73-770-76
(197)	-	73-770-77
(198)	-	73-770-78
(199)	-	73-770-79
(200)	-	73-770-80
(201)	-	73-770-81
(202)	-	73-770-82
(203)	-	73-770-83
(204)	-	73-770-84
(205)	-	73-770-85
(206)	-	73-770-86
(207)	-	73-770-87
(208)	-	73-770-88
(209)	-	73-770-89
(210)	-	73-770-90
(211)	-	73-770-91
(212)	-	73-770-92
(213)	-	73-770-93
(214)	-	73-770-94
(215)	-	73-770-95
(216)	-	73-770-96
(217)	-	73-770-97
(218)	-	73-770-98
(219)	-	73-770-99
(220)	-	73-770-100



**ASSESSMENT DIAGRAM
RANCHO MURIETA COMMUNITY SERVICES DISTRICT
IMPROVEMENT DISTRICT NO. 1**

COUNTY OF SACRAMENTO, CALIFORNIA
RAYMOND VAIL & ASSOCIATES



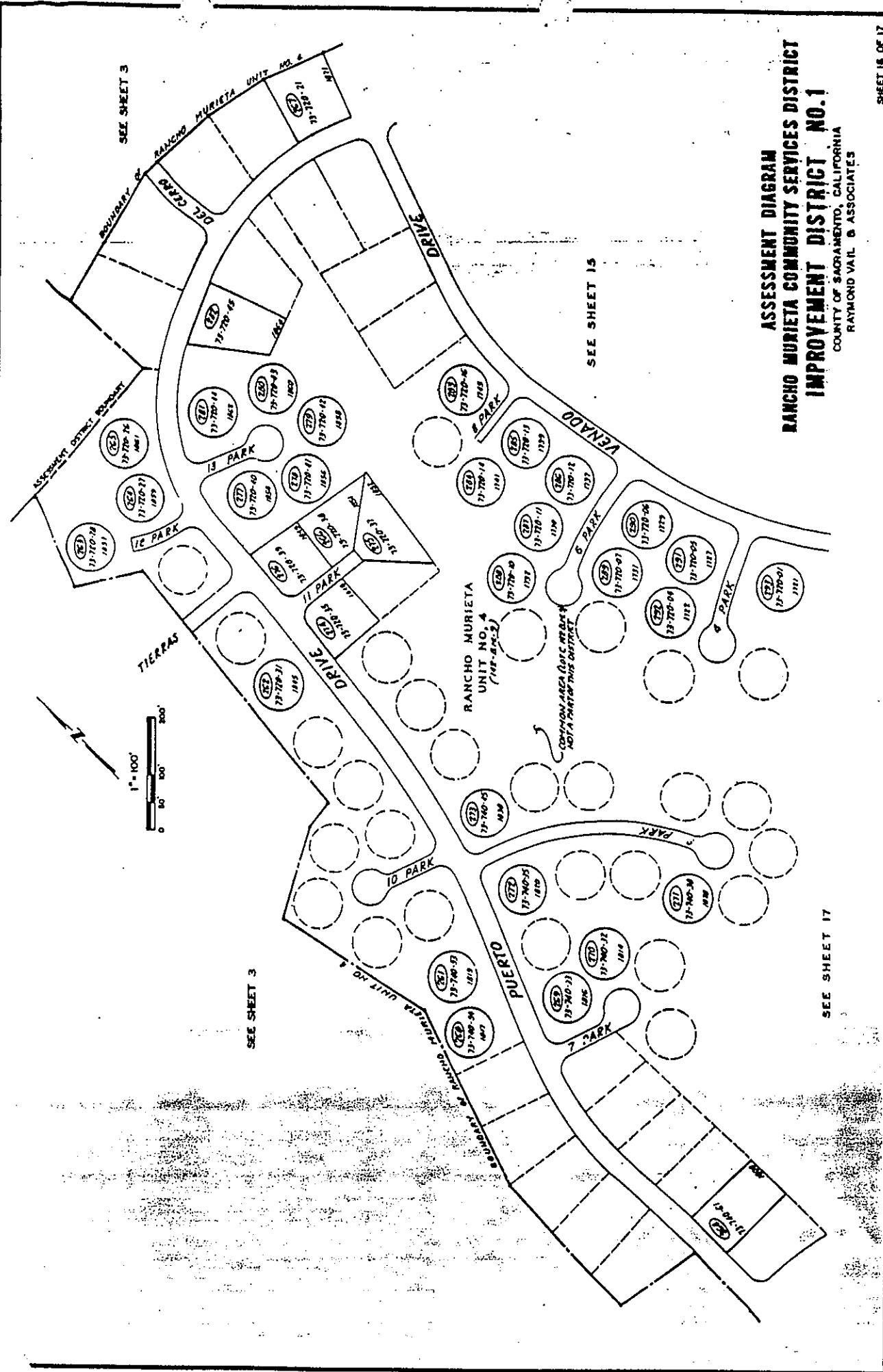
SEE SHEET 3

SEE SHEET 17

SEE SHEET 10

ASSESSMENT DIAGRAM
RANCHO MURIETA COMMUNITY SERVICES DISTRICT
IMPROVEMENT DISTRICT NO. 1
 COUNTY OF SACRAMENTO, CALIFORNIA
 RAYMOND VAIL & ASSOCIATES

SHEET 18 OF 17
 MCO 17056-02



SEE SHEET 3

SEE SHEET 15

SEE SHEET 3

SEE SHEET 17

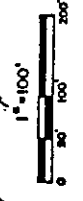


RANCHO MURIETA
 UNIT NO. 4
 (M.F. 64-3)

COMMON AREA (DUCK CREEK)
 NOT A PART OF THIS DISTRICT

SEE SHEET 15

SEE SHEET 10



SEE SHEET

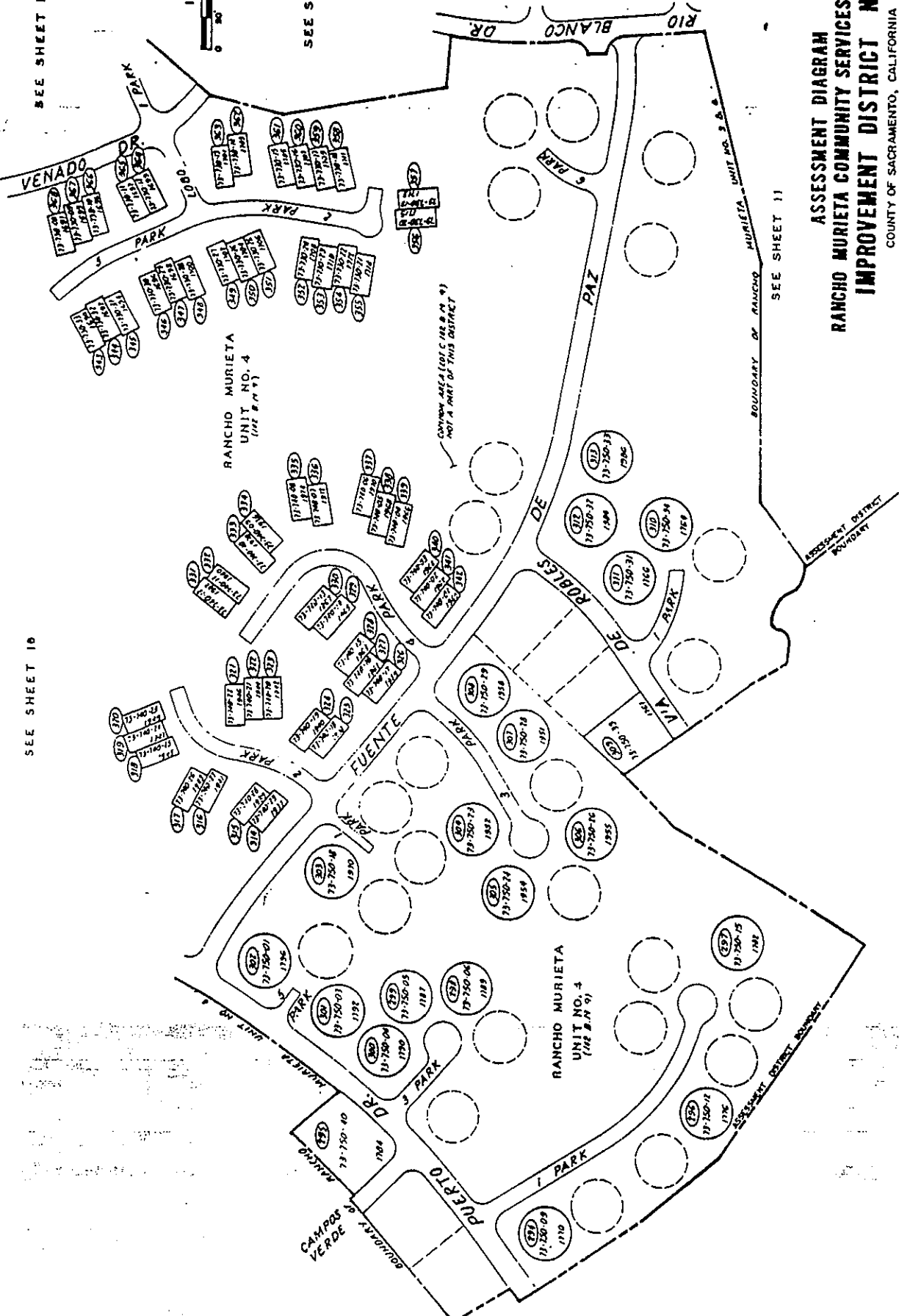
SEE SHEET 11

ASSESSMENT DIAGRAM
RANCHO MURIETA COMMUNITY SERVICES DISTRICT
IMPROVEMENT DISTRICT NO. 1

COUNTY OF SACRAMENTO, CALIFORNIA
 RAYMOND VAIL & ASSOCIATES

SHEET 17 OF 17

702540



BOUNDARY OF RANCHO MURIETA UNIT NO. 3 & 4

IMPROVEMENT DISTRICT BOUNDARY

CANYON AREA (EOLC 142 & 91) NOT A PART OF THIS DISTRICT

6.3 Parcel Changes Summary

When a parcel of land that is subject to a special assessment goes through a subdivision or lot line adjustment, an assessment apportionment is required by law. Parts 10 and 10.5 of Division 10 of the California Streets and Highways Code require an apportionment of an assessment lien every time a subdivision, lot line adjustment or other re-configuration of land occurs to a property within a 1915 Act Assessment District. Additionally, Section 66493(d) of the Subdivision Map Act requires that:

“ . . . whenever land subject to a special assessment for payment of a bond would be divided . . . and the special assessment is not paid in full or secured . . . the final map or parcel map shall not be recorded until the owner or subdivider files . . . with the County a certificate . . . [which] shall certify that provision has been made for segregation [of the assessment].”

In its most basic form, an apportionment takes the assessment lien from an existing parcel(s) or lot(s) that is being split, and re-spreads it to newly-created parcels or lots. The need for apportionments arises during the normal course of development within most assessment districts. If a parcel is within an assessment district, an apportionment may need to be performed when your Agency receives requests for approval of:

- Subdivision or tract maps
- Parcel maps
- Lot line adjustments

Other events may generate a new assessor's parcel number (APN) but do not require an apportionment. Some examples are: (i) when two or more parcels merge into one new parcel, and (ii) when a lot is assigned a new APN by the County (for example, if a piece of the parcel becomes right-of-way)

Recording apportionments in a timely and accurate manner ensures that all parcels within the assessment district are properly assessed, thus allowing the Agency to service its debt to bondholders without risk of under collecting. When an apportionment is completed, the Amended Assessment Diagram and the Notice of Amended Assessment is recorded with the County Recorder, creating the new liens. By recording apportionments as soon as the parcel splits occur, the assessment liens are kept current so that a title search shows up-to-date lien information. If a lien is not recorded, it may not be disclosed on a title search, which can lead to tax bill “sticker shock” for the new buyer of a recently split parcel (and potential legal problems). Timely recordation of new liens also speeds up judicial foreclosure actions against delinquent parcels by clearly delineating the parcel owner's responsibility for the assessment lien.

The following pages detail parcel changes that occurred effective for the 2003/04 fiscal year.

Rancho Murieta Community Services District
County of Sacramento, California

ID 1 - Assessment District No. 1

Account Change Report

- From -				- To -			
AccountID	Assessment ID	Orig. Prin. %	Unbilled Prin. %	Unbilled Prin. %	Unbilled Prin. %	Orig. Prin. %	Assessment ID
09/05/2002							
073-0700-109-0000		\$9,850.78 100.00%	\$3,411.49 100.00%	34.63%		\$9,850.78 100.00%	1627c
09/05/2002	1 Accounts	\$9,850.78 100.00%	\$3,411.49 100.00%	34.63%		\$9,850.78 100.00%	1 Accounts
09/05/2002							
073-0700-113-0000		\$9,850.78 100.00%	\$3,411.49 100.00%	34.63%		\$9,850.78 100.00%	1619c
09/05/2002	1 Accounts	\$9,850.78 100.00%	\$3,411.49 100.00%	34.63%		\$9,850.78 100.00%	1 Accounts
09/05/2002							
073-0700-117-0000		\$7,388.09 100.00%	\$2,558.61 100.00%	34.63%		\$7,388.09 100.00%	1617c
09/05/2002	1 Accounts	\$7,388.09 100.00%	\$2,558.61 100.00%	34.63%		\$7,388.09 100.00%	1 Accounts
09/05/2002							
073-0700-120-0000		\$7,388.09 100.00%	\$2,558.61 100.00%	34.63%		\$7,388.09 100.00%	1613c
09/05/2002	1 Accounts	\$7,388.09 100.00%	\$2,558.61 100.00%	34.63%		\$7,388.09 100.00%	1 Accounts
09/05/2002							
073-0700-124-0000		\$7,388.09 100.00%	\$2,558.61 100.00%	34.63%		\$7,388.09 100.00%	1585c
09/05/2002	1 Accounts	\$7,388.09 100.00%	\$2,558.61 100.00%	34.63%		\$7,388.09 100.00%	1 Accounts
09/05/2002							
073-0700-128-0000		\$9,850.78 100.00%	\$3,411.49 100.00%	34.63%		\$9,850.78 100.00%	1622c
09/05/2002	1 Accounts	\$9,850.78 100.00%	\$3,411.49 100.00%	34.63%		\$9,850.78 100.00%	1 Accounts



Rancho Murieta Community Services District
County of Sacramento, California

ID 1 - Assessment District No. 1

Account Change Report

- From -		- To -									
AccountID	Assessment ID	Orig. Prin. %	Unbilled Prin. %	Unbilled Prin. %	Orig. Prin. %	Assessment ID	Orig. Prin. %	Prin. Forward.	Orig. Prin. %	Prin. Fwd. Orig.Prin	
09/05/2002											
073-0730-063-0000		\$9,850.78	100.00%	\$3,411.49	100.00%	1713c	100.00%	\$3,411.49	100.00%	34.63%	
09/05/2002	I Accounts	\$9,850.78	100.00%	\$3,411.49	100.00%	I Accounts	100.00%	\$3,411.49	100.00%	34.63%	
09/05/2002											
073-0730-066-0000		\$9,850.78	100.00%	\$3,411.49	100.00%	1709c	100.00%	\$3,411.49	100.00%	34.63%	
09/05/2002	I Accounts	\$9,850.78	100.00%	\$3,411.49	100.00%	I Accounts	100.00%	\$3,411.49	100.00%	34.63%	
09/05/2002											
073-0730-068-0000		\$9,850.78	100.00%	\$3,411.49	100.00%	1705c	100.00%	\$3,411.49	100.00%	34.63%	
09/05/2002	I Accounts	\$9,850.78	100.00%	\$3,411.49	100.00%	I Accounts	100.00%	\$3,411.49	100.00%	34.63%	
09/05/2002											
073-0730-071-0000		\$9,850.78	100.00%	\$3,411.49	100.00%	1701c	100.00%	\$3,411.49	100.00%	34.63%	
09/05/2002	I Accounts	\$9,850.78	100.00%	\$3,411.49	100.00%	I Accounts	100.00%	\$3,411.49	100.00%	34.63%	
09/05/2002											
073-0730-075-0000		\$9,850.78	100.00%	\$3,411.49	100.00%	1701c	100.00%	\$3,411.49	100.00%	34.63%	
09/05/2002	I Accounts	\$9,850.78	100.00%	\$3,411.49	100.00%	I Accounts	100.00%	\$3,411.49	100.00%	34.63%	
09/05/2002											
073-0790-004-0000	0385	\$419,370.92	100.00%	\$145,234.77	100.00%	073-0790-036-0000	100.00%	\$145,234.77	100.00%	34.63%	
09/05/2002	I Accounts	\$419,370.92	100.00%	\$145,234.77	100.00%	I Accounts	100.00%	\$145,234.77	100.00%	34.63%	
09/05/2002											
073-0790-019-0000	0904	\$822,117.09	100.00%	\$284,712.13	100.00%	073-0790-037-0000	100.00%	\$284,712.13	100.00%	34.63%	
09/05/2002	I Accounts	\$822,117.09	100.00%	\$284,712.13	100.00%	I Accounts	100.00%	\$284,712.13	100.00%	34.63%	



Rancho Murieta Community Services District

County of Sacramento, California

ID 1 - Assessment District No. 1

Account Change Report

- From -		- To -										
AccountID	Assessment ID	Orig. Prin. %	Unbilled Prin. %	Unbilled Prin. %	Unbilled Prin. %	Orig. Prin.	Assessment ID	Orig. Prin.	Orig. Prin. %	Prin. Forward.	Prin. Fwd. %	Prin. Fwd. Orig. Prin.
08/11/2003	1 Accounts	\$419,370.92	100.00%	\$113,230.15	100.00%	\$419,370.92	59 Accounts	\$419,370.92	100.00%	\$113,230.15	100.00%	\$113,230.15
08/29/2003												
073-0790-037-0000		5822,117.09	100.00%	\$221,971.61	100.00%	\$0.00	1193	\$0.00	0.00%	\$0.00	0.00%	0.00%
						386,878.08	1195	386,878.08	47.06%	104,457.08	47.06%	104,457.08
						0.00	1194	0.00	0.00%	0.00	0.00%	0.00%
						6,908.55	1128	6,908.55	0.84%	1,865.05	0.84%	1,865.05
						6,908.55	1129	6,908.55	0.84%	1,865.31	0.84%	1,865.31
						6,908.55	1130	6,908.55	0.84%	1,865.31	0.84%	1,865.31
						6,908.55	1131	6,908.55	0.84%	1,865.31	0.84%	1,865.31
						6,908.55	1132	6,908.55	0.84%	1,865.31	0.84%	1,865.31
						6,908.55	1133	6,908.55	0.84%	1,865.31	0.84%	1,865.31
						6,908.55	1134	6,908.55	0.84%	1,865.31	0.84%	1,865.31
						6,908.55	1135	6,908.55	0.84%	1,865.31	0.84%	1,865.31
						6,908.55	1136	6,908.55	0.84%	1,865.31	0.84%	1,865.31
						6,908.55	1137	6,908.55	0.84%	1,865.31	0.84%	1,865.31
						6,908.55	1138	6,908.55	0.84%	1,865.31	0.84%	1,865.31
						6,908.55	1139	6,908.55	0.84%	1,865.31	0.84%	1,865.31
						6,908.55	1140	6,908.55	0.84%	1,865.31	0.84%	1,865.31
						6,908.55	1141	6,908.55	0.84%	1,865.31	0.84%	1,865.31
						6,908.55	1142	6,908.55	0.84%	1,865.31	0.84%	1,865.31
						6,908.55	1143	6,908.55	0.84%	1,865.31	0.84%	1,865.31
						6,908.55	1144	6,908.55	0.84%	1,865.31	0.84%	1,865.31
						6,908.55	1145	6,908.55	0.84%	1,865.31	0.84%	1,865.31
						6,908.55	1146	6,908.55	0.84%	1,865.31	0.84%	1,865.31
						6,908.55	1147	6,908.55	0.84%	1,865.31	0.84%	1,865.31
						6,908.55	1148	6,908.55	0.84%	1,865.31	0.84%	1,865.31
						6,908.55	1149	6,908.55	0.84%	1,865.31	0.84%	1,865.31
						6,908.55	1150	6,908.55	0.84%	1,865.31	0.84%	1,865.31
						6,908.55	1151	6,908.55	0.84%	1,865.31	0.84%	1,865.31
						6,908.55	1152	6,908.55	0.84%	1,865.31	0.84%	1,865.31
						6,908.55	1153	6,908.55	0.84%	1,865.31	0.84%	1,865.31
						6,908.55	1154	6,908.55	0.84%	1,865.31	0.84%	1,865.31
						6,908.55	1155	6,908.55	0.84%	1,865.31	0.84%	1,865.31
						6,908.55	1156	6,908.55	0.84%	1,865.31	0.84%	1,865.31
						6,908.55	1157	6,908.55	0.84%	1,865.31	0.84%	1,865.31
						6,908.55	1158	6,908.55	0.84%	1,865.31	0.84%	1,865.31
						6,908.55	1159	6,908.55	0.84%	1,865.31	0.84%	1,865.31



Rancho Murieta Community Services District

County of Sacramento, California

ID 1 - Assessment District No. 1

Account Change Report

- From -				- To -						
AccountID	Assessment ID	Orig. Prin. %	Unbilled Prin. %	Unbilled Prin. %	Unbilled Prin. %	Orig. Prin. %	Prin. Fwd. %	Prin. Fwd. %	Prin. Fwd. %	Prin. Fwd. %
	073-0840-033-0000					\$6,908.56	0.84%	\$1,865.31	0.84%	27.00%
	073-0840-034-0000					6,908.56	0.84%	1,865.31	0.84%	27.00%
	073-0840-035-0000					6,908.56	0.84%	1,865.31	0.84%	27.00%
	073-0840-036-0000					6,908.56	0.84%	1,865.31	0.84%	27.00%
	073-0840-037-0000					6,908.56	0.84%	1,865.31	0.84%	27.00%
	073-0840-038-0000					6,908.56	0.84%	1,865.31	0.84%	27.00%
	073-0840-039-0000					6,908.56	0.84%	1,865.31	0.84%	27.00%
	073-0840-040-0000					6,908.56	0.84%	1,865.31	0.84%	27.00%
	073-0840-041-0000					6,908.56	0.84%	1,865.31	0.84%	27.00%
	073-0840-042-0000					6,908.56	0.84%	1,865.31	0.84%	27.00%
	073-0840-043-0000					6,908.56	0.84%	1,865.31	0.84%	27.00%
	073-0840-044-0000					0.00	0.00%	0.00	0.00%	0.00%
	073-0840-045-0000					6,908.56	0.84%	1,865.31	0.84%	27.00%
	073-0840-046-0000					6,908.56	0.84%	1,865.31	0.84%	27.00%
	073-0840-047-0000					6,908.56	0.84%	1,865.31	0.84%	27.00%
	073-0840-048-0000					6,908.56	0.84%	1,865.31	0.84%	27.00%
	073-0840-049-0000					6,908.56	0.84%	1,865.31	0.84%	27.00%
	073-0840-050-0000					6,908.56	0.84%	1,865.31	0.84%	27.00%
	073-0840-051-0000					6,908.56	0.84%	1,865.31	0.84%	27.00%
	073-0840-052-0000					6,908.56	0.84%	1,865.31	0.84%	27.00%
	073-0840-053-0000					6,908.56	0.84%	1,865.31	0.84%	27.00%
	073-0840-054-0000					6,908.56	0.84%	1,865.31	0.84%	27.00%
	073-0840-055-0000					6,908.56	0.84%	1,865.31	0.84%	27.00%
	073-0840-056-0000					6,908.56	0.84%	1,865.31	0.84%	27.00%
	073-0840-057-0000					6,908.56	0.84%	1,865.31	0.84%	27.00%
	073-0840-058-0000					6,908.56	0.84%	1,865.31	0.84%	27.00%
	073-0840-059-0000					0.00	0.00%	0.00	0.00%	0.00%
	073-0850-001-0000					6,908.56	0.84%	1,865.31	0.84%	27.00%
	073-0850-002-0000					6,908.56	0.84%	1,865.31	0.84%	27.00%
	073-0850-003-0000					6,908.56	0.84%	1,865.31	0.84%	27.00%
	073-0850-004-0000					6,908.56	0.84%	1,865.31	0.84%	27.00%
	073-0850-005-0000					6,908.56	0.84%	1,865.31	0.84%	27.00%
	073-0850-006-0000					6,908.56	0.84%	1,865.31	0.84%	27.00%
	073-0850-007-0000					0.00	0.00%	0.00	0.00%	0.00%
	69 Accounts					\$822,117.09	100.00%	\$221,971.61	100.00%	27.00%
08/29/2003	1 Accounts					\$822,117.09	100.00%	\$221,971.61	100.00%	27.00%

08/29/2003



7. DELINQUENCY DETAIL

The following pages detail delinquencies for the 2002/03 and prior fiscal years.

Rancho Murieta Community Services District County of Sacramento, California ID 1 - Assessment District No. 1

Delinquency Detail Report

Late Charges Calculated Through 06/30/2003

Account ID	Property ID	Owner	Due Date	Amount	Penalty	Interest	Fees	Total	Delinquency Mgmt (1)	Misc (2)
073-0570-010-0000	073-0570-010-0000	GURIDI MAURICE 7083 MURIETA PKWY #12 RANCHO MURIETA, CA 95683	04/10/2002	126.16	12.62	22.71	0.00	161.49	RL	
			12/10/2002	126.25	12.63	0.00	0.00	138.88	RL	
			04/10/2003	126.25	12.63	0.00	0.00	138.88	RL	
		Account Subtotal:		\$378.66	\$37.88	\$22.71	\$0.00	\$439.25		
073-0700-143-TE	073-0700-143-TE	MILLERS DENISE MARIE 6201 CAZADOR PK #3 RANCHO MURIETA, CA 95683	12/10/2002	351.72	35.17	0.00	0.00	386.89		
			04/10/2003	351.72	35.17	0.00	0.00	386.89		
		Account Subtotal:		\$703.44	\$70.34	\$0.00	\$0.00	\$773.78		
073-0720-040-0000	073-0720-040-0000	BAUER FAMILY TRUST & SARAH & PAULA R HAL PO BOX 13070 SACRAMENTO, CA 95813	12/10/2000	237.59	23.76	85.53	0.00	346.88	RL DL	
			04/10/2001	237.57	23.76	85.53	0.00	346.86	RL DL	
			12/10/2001	236.98	23.70	42.66	0.00	303.34	RL	
			04/10/2002	236.98	23.70	42.66	0.00	303.34	RL	
			12/10/2002	237.15	23.72	0.00	0.00	260.87	RL	
			04/10/2003	237.15	23.72	0.00	0.00	260.87	RL	
		Account Subtotal:		\$1,423.42	\$142.36	\$256.38	\$0.00	\$1,822.16		
073-0730-047-0000	073-0730-047-0000	MCCARRON KERI 6418 LOBO PARK DR #3 RANCHO MURIETA, CA 95683	04/10/2002	351.48	35.15	63.27	0.00	449.90	RL	
			12/10/2002	351.72	35.17	0.00	0.00	386.89	RL	
			04/10/2003	351.72	35.17	0.00	0.00	386.89	RL	
		Account Subtotal:		\$1,054.92	\$105.49	\$63.27	\$0.00	\$1,223.68		
073-0740-066-0000	073-0740-066-0000	EDENS MARVIN P & DENISE A 15041 FUENTE DE PAZ RANCHO MURIETA, CA 95683	12/10/2002	237.15	23.72	0.00	0.00	260.87	RL	
			04/10/2003	237.15	23.72	0.00	0.00	260.87	RL	
		Account Subtotal:		\$474.30	\$47.44	\$0.00	\$0.00	\$521.74		
073-0740-069-0000	073-0740-069-0000	DUANE G & MYRTLE D THOMPSON REVOCABLE LI 6532 RIO OSO DR RANCHO MURIETA, CA 95683	04/10/2003	237.15	23.72	0.00	0.00	260.87	RL	
		Account Subtotal:		\$237.15	\$23.72	\$0.00	\$0.00	\$260.87		
073-0750-012-0000	073-0750-012-0000	ELLIOTT FAMILY TRUST & NORMA D FROST	12/10/1998	238.11	23.81	171.44	0.00	433.36	RL DL	

(1) Delinquency Management Codes: RL=Reminder Sent; DL=Demand Letter Sent; SR=Tax Roll Removal Requested; SC=Tax Roll Removal Confirmed; FI=Foreclosure Letter Sent; OL=Other Letter Sent; FJ=Judicial Foreclosure Initiated; FJH=Judicial Foreclosure on Hold/Special Case; FC=Foreclosure Complete; LIT=Litigation Guarantee; LGL=Legal Fees and Costs; O=Other Fees; SO=Tax Roll Removal County Fee; PP = Payment Plan.

(2) Miscellaneous Codes: DB=Direct Bill Sent; BK=Declared Bankruptcy; PM=Partial Payment made, remainder delinquent.



Rancho Murieta Community Services District County of Sacramento, California ID 1 - Assessment District No. 1

Delinquency Detail Report

Late Charges Calculated Through 06/30/2003

Account ID	Property ID	Owner	Due Date	Amount	Penalty	Interest	Fees	Total	Delinquency Mgmt (1)	Misc (2)
073-0750-012-0000	073-0750-012-0000	PO BOX 13070 SACRAMENTO, CA 95813	04/10/1999	238.11	23.81	171.44	0.00	433.36	RL DL	
			12/10/1999	238.31	23.83	128.69	0.00	390.83	RL DL	
			04/10/2000	238.31	23.83	128.69	0.00	390.83	RL DL	
			12/10/2000	237.59	23.76	85.53	0.00	346.88	RL DL	
			04/10/2001	237.57	23.76	85.53	0.00	346.86	RL DL	
			12/10/2001	236.98	23.70	42.66	0.00	303.34	RL	
			04/10/2002	236.98	23.70	42.66	0.00	303.34	RL	
			12/10/2002	237.15	23.72	0.00	0.00	260.87	RL	
			04/10/2003	237.15	23.72	0.00	0.00	260.87	RL	
		Account Subtotal:		\$2,376.26	\$237.64	\$856.64	\$0.00	\$3,470.54		
073-0790-004-0000	073-0790-004-0000	RANCHO NORTH PROPERTIES LLC ONE BUSH ST 800 SAN FRANCISCO, CA 94105	04/10/2002	19,504.64	1,950.46	3,510.84	0.00	24,965.94	FL SC	SR
		Account Subtotal:		\$19,504.64	\$1,950.46	\$3,510.84	\$0.00	\$24,965.94		
073-0790-019-0000	073-0790-019-0000	RANCHO NORTH PROPERTIES LLC ONE BUSH ST 800 SAN FRANCISCO, CA 94105	04/10/2002	38,228.39	3,822.84	6,881.11	0.00	48,932.34	FL SC	SR
		Account Subtotal:		\$38,228.39	\$3,822.84	\$6,881.11	\$0.00	\$48,932.34		
073-0810-004-0000	073-0810-004-0000	CAMPBELL GARY J & MICHELLE E 15115 DE LA CRUZ DR SLOUGHHOUSE, CA 95683	04/10/2003	259.17	25.92	0.00	0.00	285.09	RL	
		Account Subtotal:		\$259.17	\$25.92	\$0.00	\$0.00	\$285.09		
073-0830-019-0000	073-0830-019-0000	FRANK LIVING TRUST 15511 DE LA CRUZ DR SLOUGHHOUSE, CA 95683	04/10/2003	259.17	25.92	0.00	0.00	285.09	RL	
		Account Subtotal:		\$259.17	\$25.92	\$0.00	\$0.00	\$285.09		
073-0830-033-0000	073-0830-033-0000	JAMES RAYMOND L & CHERYLE 3050 FITE CIR #112 SACRAMENTO, CA 95827	04/10/2003	259.17	25.92	0.00	0.00	285.09	RL	
		Account Subtotal:		\$259.17	\$25.92	\$0.00	\$0.00	\$285.09		

(1) Delinquency Management Codes: RL=Reminder Sent; DL=Demand Letter Sent; SR=Tax Roll Removal Requested; SC=Tax Roll Removal Confirmed; FL=Foreclosure Letter Sent; OL=Other Letter Sent; FI=Judicial Foreclosure Initiated; FH=Judicial Foreclosure on Hold/Special Case; FC=Foreclosure Complete; LIT=Litigation Guarantee; LGL=Legal Fees and Costs; O=Other Fees; SO=Tax Roll Removal County Fee; PP=Payment Plan.

(2) Miscellaneous Codes: DB=Direct Bill Sent; BK=Declared Bankruptcy; PM=Partial Payment made, remainder delinquent.



Rancho Murieta Community Services District
County of Sacramento, California
ID 1 - Assessment District No. 1

Delinquency Detail Report

Late Charges Calculated Through 06/30/2003

Account ID	Property ID	Owner	Due Date	Amount	Penalty	Interest	Fees	Total	Delinquency Mgmt (1)	Misc (2)
District Totals:		12 Accounts		\$65,158.69	\$6,515.93	\$11,590.95	\$0.00	\$83,265.57		
Report Totals:		12 Accounts		\$65,158.69	\$6,515.93	\$11,590.95	\$0.00	\$83,265.57		

(1) Delinquency Management Codes: RL-Reminder Sent; DL-Demand Letter Sent; SR-Tax Roll Removal Requested; SC-Tax Roll Removal Confirmed; FL-Foreclosure Letter Sent; OL-Other Letter Sent; FI-Judicial Foreclosure Initiated; FH-Judicial Foreclosure on Hold/Special Case; FC-Foreclosure Complete; LIT-Litigation Guarantee; LGL-Legal Fees and Costs; O-Other Fees; SO-Tax Roll Removal County Fee; PP - Payment Plan.
 (2) Miscellaneous Codes: DB=Declared Bankruptcy; PM=Partial Payment made, remainder delinquent.



8. FISCAL YEAR 2003/04 BILLING

8.1 *Directly Billed Parcels*

No parcels were billed directly for the 2003/04 fiscal year.

8.2 Levy Amounts

The following pages show the 2003/04 levy amounts for each parcel in the district.

Rancho Murieta Community Services District
County of Sacramento, California
ID 1 - Assessment District No. 1

8/1/2003 Billing Final Detail Report

Account ID	Property ID	Principal	Interest	Prorata	Statutory Coll. Fee	Misc Adj's	Total
073-0870-007-0000	073-0870-007-0000	589.21	161.21	(177.28)	16.00	0.00	589.14
073-0870-008-0000	073-0870-008-0000	589.21	161.21	(177.28)	16.00	0.00	589.14
073-0870-009-0000	073-0870-009-0000	589.21	161.21	(177.28)	16.00	0.00	589.14
073-0870-010-0000	073-0870-010-0000	589.21	161.21	(177.28)	16.00	0.00	589.14
073-0870-011-0000	073-0870-011-0000	589.21	161.21	(177.28)	16.00	0.00	589.14
073-0870-012-0000	073-0870-012-0000	589.21	161.21	(177.28)	16.00	0.00	589.14
073-0870-013-0000	073-0870-013-0000	589.21	161.21	(177.28)	16.00	0.00	589.14
073-0870-014-0000	073-0870-014-0000	589.21	161.21	(177.28)	16.00	0.00	589.14
073-0870-015-0000	073-0870-015-0000	589.21	161.21	(177.28)	16.00	0.00	589.14
073-0870-016-0000	073-0870-016-0000	589.21	161.21	(177.28)	16.00	0.00	589.14
073-0870-017-0000	073-0870-017-0000	589.21	161.21	(177.28)	16.00	0.00	589.14
073-0870-018-0000	073-0870-018-0000	589.21	161.21	(177.28)	16.00	0.00	589.14
073-0870-019-0000	073-0870-019-0000	589.21	161.21	(177.28)	16.00	0.00	589.14
073-0870-020-0000	073-0870-020-0000	589.22	161.21	(177.28)	16.00	(0.01)	589.14
073-0870-021-0000	073-0870-021-0000	589.22	161.21	(177.28)	16.00	(0.01)	589.14
073-0870-022-0000	073-0870-022-0000	589.22	161.21	(177.28)	16.00	(0.01)	589.14
073-0870-023-0000	073-0870-023-0000	589.22	161.21	(177.28)	16.00	(0.01)	589.14
073-0870-024-0000	073-0870-024-0000	589.22	161.21	(177.28)	16.00	(0.01)	589.14
073-0870-025-0000	073-0870-025-0000	589.22	161.21	(177.28)	16.00	(0.01)	589.14
073-0870-026-0000	073-0870-026-0000	589.22	161.21	(177.28)	16.00	(0.01)	589.14
073-0870-027-0000	073-0870-027-0000	589.22	161.21	(177.28)	16.00	(0.01)	589.14
073-0870-028-0000	073-0870-028-0000	589.22	161.21	(177.28)	16.00	(0.01)	589.14
073-0870-029-0000	073-0870-029-0000	589.22	161.21	(177.28)	16.00	(0.01)	589.14
128-0210-001-0000	128-0210-001-0000	399.51	109.31	(120.20)	16.00	0.00	404.62
128-0210-002-0000	128-0210-002-0000	399.51	109.31	(120.20)	16.00	0.00	404.62
128-0210-003-0000	128-0210-003-0000	399.51	109.31	(120.20)	16.00	0.00	404.62
128-0210-004-0000	128-0210-004-0000	399.51	109.31	(120.20)	16.00	0.00	404.62
128-0210-005-0000	128-0210-005-0000	399.51	109.31	(120.20)	16.00	0.00	404.62
128-0210-014-0000	128-0210-014-0000	399.51	109.31	(120.20)	16.00	0.00	404.62
128-0210-016-0000	128-0210-016-0000	399.51	109.31	(120.20)	16.00	0.00	404.62
128-0210-056-0000	128-0210-056-0000	399.51	109.31	(120.20)	16.00	0.00	404.62
128-0210-057-0000	128-0210-057-0000	399.51	109.31	(120.20)	16.00	0.00	404.62
128-0270-001-0000	128-0270-001-0000	475.00	129.96	(142.92)	16.00	0.00	478.04
128-0270-002-0000	128-0270-002-0000	528.32	144.55	(158.96)	16.00	0.00	529.90
128-0270-003-0000	128-0270-003-0000	838.17	229.32	(252.18)	16.00	(0.01)	831.30
128-0270-004-0000	128-0270-004-0000	347.53	95.08	(104.56)	16.00	(0.01)	354.04
128-0270-005-0000	128-0270-005-0000	456.71	124.96	(137.41)	16.00	0.00	460.26
518 Accounts		\$1,309,982.02	\$358,411.97	\$(393,975.26)	\$7,187.24	\$319.91	\$1,281,925.88



Rancho Murieta Community Services District County of Sacramento, California ID 1 - Assessment District No. 1

8/1/2003 Billing Final Detail Report

Account ID	Property ID	Principal	Interest	Prorata	Statutory Coll. Fee	Misc Adj's	Total
073-0090-043-0000	073-0090-043-0000	\$74,741.42	\$20,449.25	\$(2,487.72)	\$16.00	\$(0.01)	\$72,718.94
073-0180-020-0000	073-0180-020-0000	9,228.59	2,524.94	(2,776.64)	16.00	(0.01)	8,992.88
073-0190-025-0000	073-0190-025-0000	16,765.54	4,587.05	(5,044.31)	16.00	0.00	16,324.28
073-0190-047-0000	073-0190-047-0000	11,840.37	3,239.53	(3,562.46)	16.00	0.00	11,533.44
073-0190-069-0000	073-0190-069-0000	31,859.79	8,716.84	(9,585.77)	16.00	0.00	31,006.86
073-0190-071-0000	073-0190-071-0000	123,711.53	33,847.48	(37,221.53)	16.00	0.00	120,353.48
073-0190-098-0000	073-0190-098-0000	43,551.93	11,915.81	(13,103.62)	16.00	0.00	42,380.12
073-0190-099-0000	073-0190-099-0000	22,866.49	6,256.27	(6,879.92)	16.00	0.00	22,258.84
073-0450-003-0000	073-0450-003-0000	9,283.67	2,540.01	(2,793.21)	16.00	(0.01)	9,046.46
073-0450-005-0000	073-0450-005-0000	2,556.80	699.54	(769.27)	16.00	(0.01)	2,503.06
073-0460-009-0000	073-0460-009-0000	3,471.59	949.83	(1,044.51)	16.00	(0.01)	3,392.90
073-0460-014-0000	073-0460-014-0000	2,268.29	620.60	(682.47)	16.00	0.00	2,222.42
073-0470-003-0000	073-0470-003-0000	108,289.32	29,627.96	(32,581.39)	16.00	(0.01)	105,351.88
073-0480-001-0000	073-0480-001-0000	488.22	133.58	(146.89)	16.00	(0.01)	490.90
073-0480-010-0000	073-0480-010-0000	1,201.78	328.81	(361.58)	16.00	(0.01)	1,185.00
073-0480-011-0000	073-0480-011-0000	1,026.97	280.98	(308.99)	16.00	0.00	1,014.96
073-0480-012-0000	073-0480-012-0000	922.09	252.28	(277.43)	16.00	0.00	912.94
073-0480-018-0000	073-0480-018-0000	930.83	254.68	(280.06)	16.00	(0.01)	921.44
073-0570-002-0000	073-0570-002-0000	212.90	58.25	(64.06)	13.56	(0.01)	220.64
073-0570-003-0000	073-0570-003-0000	208.90	57.16	(62.85)	13.30	(0.01)	216.50
073-0570-004-0000	073-0570-004-0000	212.90	58.25	(64.06)	13.56	(0.01)	220.64
073-0570-005-0000	073-0570-005-0000	212.90	58.25	(64.06)	13.56	(0.01)	220.64
073-0570-006-0000	073-0570-006-0000	212.90	58.25	(64.06)	13.56	(0.01)	220.64
073-0570-007-0000	073-0570-007-0000	212.90	58.25	(64.06)	13.56	(0.01)	220.64
073-0570-008-0000	073-0570-008-0000	212.90	58.25	(64.06)	13.56	(0.01)	220.64
073-0570-009-0000	073-0570-009-0000	212.90	58.25	(64.06)	13.56	(0.01)	220.64
073-0570-010-0000	073-0570-010-0000	212.90	58.25	(64.06)	13.56	10.35	231.00
073-0570-011-0000	073-0570-011-0000	212.90	58.25	(64.06)	13.56	(0.01)	220.64
073-0570-012-0000	073-0570-012-0000	212.90	58.25	(64.06)	13.56	(0.01)	220.64
073-0580-005-0000	073-0580-005-0000	212.90	58.25	(64.06)	13.56	(0.01)	220.64
073-0580-006-0000	073-0580-006-0000	212.90	58.25	(64.06)	13.56	(0.01)	220.64
073-0580-007-0000	073-0580-007-0000	212.90	58.25	(64.06)	13.56	(0.01)	220.64
073-0580-008-0000	073-0580-008-0000	212.90	58.25	(64.06)	13.56	(0.01)	220.64
073-0580-009-0000	073-0580-009-0000	212.90	58.25	(64.06)	13.56	(0.01)	220.64
073-0580-011-0000	073-0580-011-0000	212.90	58.25	(64.06)	13.56	(0.01)	220.64
073-0580-012-0000	073-0580-012-0000	212.90	58.25	(64.06)	13.56	(0.01)	220.64
073-0580-013-0000	073-0580-013-0000	212.90	58.25	(64.06)	13.56	(0.01)	220.64
073-0580-014-0000	073-0580-014-0000	212.90	58.25	(64.06)	13.56	(0.01)	220.64
073-0580-015-0000	073-0580-015-0000	212.90	58.25	(64.06)	13.56	(0.01)	220.64
073-0580-016-0000	073-0580-016-0000	212.90	58.25	(64.06)	13.56	(0.01)	220.64
073-0580-017-0000	073-0580-017-0000	212.90	58.25	(64.06)	13.56	(0.01)	220.64
073-0580-018-0000	073-0580-018-0000	216.89	59.34	(65.26)	13.81	0.00	224.78
073-0580-019-0000	073-0580-019-0000	212.90	58.25	(64.06)	13.56	(0.01)	220.64
073-0580-020-0000	073-0580-020-0000	212.90	58.25	(64.06)	13.56	(0.01)	220.64
073-0580-021-0000	073-0580-021-0000	212.90	58.25	(64.06)	13.56	(0.01)	220.64
073-0580-022-0000	073-0580-022-0000	212.90	58.25	(64.06)	13.56	(0.01)	220.64
073-0580-023-0000	073-0580-023-0000	212.90	58.25	(64.06)	13.56	(0.01)	220.64
073-0580-024-0000	073-0580-024-0000	212.90	58.25	(64.06)	13.56	(0.01)	220.64



Rancho Murieta Community Services District County of Sacramento, California ID 1 - Assessment District No. 1

8/1/2003 Billing Final Detail Report

Account ID	Property ID	Principal	Interest	Prorata	Statutory Coll. Fee	Misc Adjs	Total
073-0580-025-0000	073-0580-025-0000	212.90	58.25	(64.06)	13.56	(0.01)	220.64
073-0580-026-0000	073-0580-026-0000	212.90	58.25	(64.06)	13.56	(0.01)	220.64
073-0580-027-0000	073-0580-027-0000	212.90	58.25	(64.06)	13.56	(0.01)	220.64
073-0580-028-0000	073-0580-028-0000	216.89	59.34	(65.26)	13.81	0.00	224.78
073-0580-029-0000	073-0580-029-0000	212.90	58.25	(64.06)	13.56	(0.01)	220.64
073-0580-030-0000	073-0580-030-0000	212.90	58.25	(64.06)	13.56	(0.01)	220.64
073-0580-031-0000	073-0580-031-0000	212.90	58.25	(64.06)	13.56	(0.01)	220.64
073-0580-032-0000	073-0580-032-0000	212.90	58.25	(64.06)	13.56	(0.01)	220.64
073-0590-003-0000	073-0590-003-0000	408.29	111.71	(122.84)	16.00	0.00	413.16
073-0590-005-0000	073-0590-005-0000	408.29	111.71	(122.84)	16.00	0.00	413.16
073-0590-010-0000	073-0590-010-0000	408.29	111.71	(122.84)	16.00	0.00	413.16
073-0590-011-0000	073-0590-011-0000	408.29	111.71	(122.84)	16.00	0.00	413.16
073-0600-008-0000	073-0600-008-0000	408.29	111.71	(122.84)	16.00	0.00	413.16
073-0600-009-0000	073-0600-009-0000	408.29	111.71	(122.84)	16.00	0.00	413.16
073-0600-024-0000	073-0600-024-0000	408.29	111.71	(122.84)	16.00	0.00	413.16
073-0600-025-0000	073-0600-025-0000	408.29	111.71	(122.84)	16.00	0.00	413.16
073-0600-035-0000	073-0600-035-0000	408.29	111.71	(122.84)	16.00	0.00	413.16
073-0600-045-0000	073-0600-045-0000	408.29	111.71	(122.84)	16.00	0.00	413.16
073-0600-054-0000	073-0600-054-0000	408.29	111.71	(122.84)	16.00	0.00	413.16
073-0600-057-0000	073-0600-057-0000	408.29	111.71	(122.84)	16.00	0.00	413.16
073-0620-002-0000	073-0620-002-0000	408.29	111.71	(122.84)	16.00	0.00	413.16
073-0620-003-0000	073-0620-003-0000	408.29	111.71	(122.84)	16.00	0.00	413.16
073-0620-004-0000	073-0620-004-0000	408.29	111.71	(122.84)	16.00	0.00	413.16
073-0620-021-0000	073-0620-021-0000	408.29	111.71	(122.84)	16.00	0.00	413.16
073-0620-026-0000	073-0620-026-0000	408.29	111.71	(122.84)	16.00	0.00	413.16
073-0620-029-0000	073-0620-029-0000	408.29	111.71	(122.84)	16.00	0.00	413.16
073-0620-030-0000	073-0620-030-0000	408.29	111.71	(122.84)	16.00	0.00	413.16
073-0620-037-0000	073-0620-037-0000	408.29	111.71	(122.84)	16.00	0.00	413.16
073-0620-043-0000	073-0620-043-0000	408.29	111.71	(122.84)	16.00	0.00	413.16
073-0620-053-0000	073-0620-053-0000	408.29	111.71	(122.84)	16.00	0.00	413.16
073-0620-054-0000	073-0620-054-0000	408.29	111.71	(122.84)	16.00	0.00	413.16
073-0640-001-0000	073-0640-001-0000	408.29	111.71	(122.84)	16.00	0.00	413.16
073-0640-007-0000	073-0640-007-0000	408.29	111.71	(122.84)	16.00	0.00	413.16
073-0640-025-0000	073-0640-025-0000	408.29	111.71	(122.84)	16.00	0.00	413.16
073-0640-038-0000	073-0640-038-0000	408.29	111.71	(122.84)	16.00	0.00	413.16
073-0650-036-0000	073-0650-036-0000	408.29	111.71	(122.84)	16.00	0.00	413.16
073-0650-037-0000	073-0650-037-0000	408.29	111.71	(122.84)	16.00	0.00	413.16
073-0650-039-0000	073-0650-039-0000	408.29	111.71	(122.84)	16.00	0.00	413.16
073-0650-050-0000	073-0650-050-0000	408.29	111.71	(122.84)	16.00	0.00	413.16
073-0660-016-0000	073-0660-016-0000	408.29	111.71	(122.84)	16.00	0.00	413.16
073-0660-017-0000	073-0660-017-0000	415.95	113.80	(125.15)	16.00	0.00	420.60
073-0660-023-0000	073-0660-023-0000	408.29	111.71	(122.84)	16.00	0.00	413.16
073-0690-012-0000	073-0690-012-0000	408.29	111.71	(122.84)	16.00	0.00	413.16
073-0690-063-0000	073-0690-063-0000	816.58	223.42	(245.69)	16.00	(0.01)	810.30
073-0690-064-0000	073-0690-064-0000	816.58	223.42	(245.69)	16.00	(0.01)	810.30
073-0690-065-0000	073-0690-065-0000	816.58	223.42	(245.69)	16.00	(0.01)	810.30
073-0690-066-0000	073-0690-066-0000	816.58	223.42	(245.69)	16.00	(0.01)	810.30
073-0690-067-0000	073-0690-067-0000	816.58	223.42	(245.69)	16.00	(0.01)	810.30



Rancho Murietta Community Services District
County of Sacramento, California
ID 1 - Assessment District No. 1

8/1/2003 Billing Final Detail Report

Account ID	Property ID	Principal	Interest	Prorata	Statutory Coll. Fee	Misc Adjs	Total
073-0710-024-0000	073-0710-024-0000	415.95	113.80	(125.15)	16.00	0.00	420.60
073-0710-025-0000	073-0710-025-0000	408.29	111.71	(122.84)	16.00	0.00	413.16
073-0710-026-0000	073-0710-026-0000	408.29	111.71	(122.84)	16.00	0.00	413.16
073-0710-027-0000	073-0710-027-0000	408.29	111.71	(122.84)	16.00	0.00	413.16
073-0710-028-0000	073-0710-028-0000	408.29	111.71	(122.84)	16.00	0.00	413.16
073-0710-029-0000	073-0710-029-0000	408.29	111.71	(122.84)	16.00	0.00	413.16
073-0710-030-0000	073-0710-030-0000	408.29	111.71	(122.84)	16.00	0.00	413.16
073-0710-031-0000	073-0710-031-0000	408.29	111.71	(122.84)	16.00	0.00	413.16
073-0710-032-0000	073-0710-032-0000	408.29	111.71	(122.84)	16.00	0.00	413.16
073-0710-033-0000	073-0710-033-0000	408.29	111.71	(122.84)	16.00	0.00	413.16
073-0710-034-0000	073-0710-034-0000	415.95	113.80	(125.15)	16.00	0.00	420.60
073-0710-035-0000	073-0710-035-0000	408.29	111.71	(122.84)	16.00	0.00	413.16
073-0710-036-0000	073-0710-036-0000	408.29	111.71	(122.84)	16.00	0.00	413.16
073-0710-037-0000	073-0710-037-0000	408.29	111.71	(122.84)	16.00	0.00	413.16
073-0710-038-0000	073-0710-038-0000	408.29	111.71	(122.84)	16.00	0.00	413.16
073-0710-075-0000	073-0710-075-0000	816.58	223.42	(245.69)	16.00	(0.01)	810.30
073-0710-076-0000	073-0710-076-0000	816.58	223.42	(245.69)	16.00	(0.01)	810.30
073-0710-078-0000	073-0710-078-0000	816.58	223.42	(245.69)	16.00	(0.01)	810.30
073-0710-079-0000	073-0710-079-0000	816.58	223.42	(245.69)	16.00	(0.01)	810.30
073-0710-080-0000	073-0710-080-0000	612.43	167.56	(184.26)	16.00	(0.01)	611.72
073-0710-081-0000	073-0710-081-0000	612.43	167.56	(184.26)	16.00	(0.01)	611.72
073-0710-082-0000	073-0710-082-0000	816.58	223.42	(245.69)	16.00	(0.01)	810.30
073-0710-083-0000	073-0710-083-0000	816.58	223.42	(245.69)	16.00	(0.01)	810.30
073-0710-086-0000	073-0710-086-0000	816.58	223.42	(245.69)	16.00	(0.01)	810.30
073-0710-087-0000	073-0710-087-0000	612.43	167.56	(184.26)	16.00	(0.01)	611.72
073-0710-092-0000	073-0710-092-0000	816.58	223.42	(245.69)	16.00	(0.01)	810.30
073-0710-093-0000	073-0710-093-0000	612.43	167.56	(184.26)	16.00	(0.01)	611.72
073-0710-094-0000	073-0710-094-0000	612.43	167.56	(184.26)	16.00	(0.01)	611.72
073-0710-118-0000	073-0710-118-0000	816.58	223.42	(245.69)	16.00	(0.01)	810.30
073-0710-119-0000	073-0710-119-0000	816.58	223.42	(245.69)	16.00	(0.01)	810.30
073-0710-120-0000	073-0710-120-0000	816.58	223.42	(245.69)	16.00	(0.01)	810.30
073-0710-121-0000	073-0710-121-0000	612.43	167.56	(184.26)	16.00	(0.01)	611.72
073-0710-122-0000	073-0710-122-0000	612.43	167.56	(184.26)	16.00	(0.01)	611.72
073-0710-123-0000	073-0710-123-0000	816.58	223.42	(245.69)	16.00	(0.01)	810.30
073-0720-001-0000	073-0720-001-0000	408.29	111.71	(122.84)	16.00	0.00	413.16
073-0720-004-0000	073-0720-004-0000	408.29	111.71	(122.84)	16.00	0.00	413.16
073-0720-006-0000	073-0720-006-0000	408.29	111.71	(122.84)	16.00	0.00	413.16
073-0720-007-0000	073-0720-007-0000	408.29	111.71	(122.84)	16.00	0.00	413.16
073-0720-010-0000	073-0720-010-0000	408.29	111.71	(122.84)	16.00	0.00	413.16
073-0720-011-0000	073-0720-011-0000	408.29	111.71	(122.84)	16.00	0.00	413.16
073-0720-012-0000	073-0720-012-0000	408.29	111.71	(122.84)	16.00	0.00	413.16
073-0720-013-0000	073-0720-013-0000	408.29	111.71	(122.84)	16.00	0.00	413.16
073-0720-014-0000	073-0720-014-0000	408.29	111.71	(122.84)	16.00	0.00	413.16
073-0720-016-0000	073-0720-016-0000	408.29	111.71	(122.84)	16.00	0.00	413.16
073-0720-021-0000	073-0720-021-0000	408.29	111.71	(122.84)	16.00	0.00	413.16
073-0720-026-0000	073-0720-026-0000	408.29	111.71	(122.84)	16.00	0.00	413.16
073-0720-027-0000	073-0720-027-0000	423.60	115.90	(127.45)	16.00	(0.01)	428.04



Rancho Murieta Community Services District
County of Sacramento, California
ID 1 - Assessment District No. 1

8/1/2003 Billing Final Detail Report

Account ID	Property ID	Principal	Interest	Prorata	Statutory Coll. Fee	Misc Adjs	Total
073-0720-028-0000	073-0720-028-0000	408.29	111.71	(122.84)	16.00	0.00	413.16
073-0720-031-0000	073-0720-031-0000	408.29	111.71	(122.84)	16.00	0.00	413.16
073-0720-035-0000	073-0720-035-0000	408.29	111.71	(122.84)	16.00	0.00	413.16
073-0720-037-0000	073-0720-037-0000	408.29	111.71	(122.84)	16.00	0.00	413.16
073-0720-038-0000	073-0720-038-0000	408.29	111.71	(122.84)	16.00	0.00	413.16
073-0720-039-0000	073-0720-039-0000	408.29	111.71	(122.84)	16.00	0.00	413.16
073-0720-040-0000	073-0720-040-0000	408.29	111.71	(122.84)	16.00	10.36	423.52
073-0720-041-0000	073-0720-041-0000	408.29	111.71	(122.84)	16.00	0.00	413.16
073-0720-042-0000	073-0720-042-0000	408.29	111.71	(122.84)	16.00	0.00	413.16
073-0720-043-0000	073-0720-043-0000	408.29	111.71	(122.84)	16.00	0.00	413.16
073-0720-044-0000	073-0720-044-0000	408.29	111.71	(122.84)	16.00	0.00	413.16
073-0720-045-0000	073-0720-045-0000	408.29	111.71	(122.84)	16.00	0.00	413.16
073-0730-034-0000	073-0730-034-0000	612.43	167.56	(184.26)	16.00	(0.01)	611.72
073-0730-035-0000	073-0730-035-0000	612.43	167.56	(184.26)	16.00	(0.01)	611.72
073-0730-036-0000	073-0730-036-0000	816.58	223.42	(245.69)	16.00	(0.01)	810.30
073-0730-041-0000	073-0730-041-0000	816.58	223.42	(245.69)	16.00	(0.01)	810.30
073-0730-042-0000	073-0730-042-0000	816.58	223.42	(245.69)	16.00	(0.01)	810.30
073-0730-043-0000	073-0730-043-0000	612.43	167.56	(184.26)	16.00	(0.01)	611.72
073-0730-044-0000	073-0730-044-0000	612.43	167.56	(184.26)	16.00	10.35	622.08
073-0730-047-0000	073-0730-047-0000	612.43	167.56	(184.26)	16.00	(0.01)	611.72
073-0730-048-0000	073-0730-048-0000	612.43	167.56	(184.26)	16.00	(0.01)	611.72
073-0730-073-0000	073-0730-073-0000	612.43	167.56	(184.26)	16.00	(0.01)	611.72
073-0730-074-0000	073-0730-074-0000	612.43	167.56	(184.26)	16.00	(0.01)	611.72
073-0730-075-0000	073-0730-075-0000	816.58	223.42	(245.69)	16.00	(0.01)	810.30
073-0730-076-0000	073-0730-076-0000	816.58	223.42	(245.69)	16.00	(0.01)	810.30
073-0730-077-0000	073-0730-077-0000	816.58	223.42	(245.69)	16.00	(0.01)	810.30
073-0730-078-0000	073-0730-078-0000	816.58	223.42	(245.69)	16.00	(0.01)	810.30
073-0740-001-0000	073-0740-001-0000	408.29	111.71	(122.84)	16.00	0.00	413.16
073-0740-002-0000	073-0740-002-0000	408.29	111.71	(122.84)	16.00	0.00	413.16
073-0740-032-0000	073-0740-032-0000	408.29	111.71	(122.84)	16.00	0.00	413.16
073-0740-033-0000	073-0740-033-0000	415.95	113.80	(125.15)	16.00	0.00	420.60
073-0740-035-0000	073-0740-035-0000	408.29	111.71	(122.84)	16.00	0.00	413.16
073-0740-045-0000	073-0740-045-0000	408.29	111.71	(122.84)	16.00	0.00	413.16
073-0740-053-0000	073-0740-053-0000	408.29	111.71	(122.84)	16.00	0.00	413.16
073-0740-054-0000	073-0740-054-0000	408.29	111.71	(122.84)	16.00	0.00	413.16
073-0740-061-0000	073-0740-061-0000	408.29	111.71	(122.84)	16.00	0.00	413.16
073-0740-066-0000	073-0740-066-0000	408.29	111.71	(122.84)	16.00	0.00	413.16
073-0740-067-0000	073-0740-067-0000	408.29	111.71	(122.84)	16.00	0.00	413.16
073-0740-068-0000	073-0740-068-0000	408.29	111.71	(122.84)	16.00	0.00	413.16
073-0740-069-0000	073-0740-069-0000	408.29	111.71	(122.84)	16.00	10.36	423.52
073-0740-070-0000	073-0740-070-0000	816.58	223.42	(245.69)	16.00	(0.01)	810.30
073-0740-071-0000	073-0740-071-0000	816.58	223.42	(245.69)	16.00	(0.01)	810.30
073-0740-072-0000	073-0740-072-0000	612.43	167.56	(184.26)	16.00	(0.01)	611.72
073-0740-073-0000	073-0740-073-0000	612.43	167.56	(184.26)	16.00	(0.01)	611.72
073-0740-074-0000	073-0740-074-0000	816.58	223.42	(245.69)	16.00	(0.01)	810.30
073-0740-075-0000	073-0740-075-0000	816.58	223.42	(245.69)	16.00	(0.01)	810.30
073-0740-076-0000	073-0740-076-0000	612.43	167.56	(184.26)	16.00	(0.01)	611.72
073-0740-077-0000	073-0740-077-0000	612.43	167.56	(184.26)	16.00	(0.01)	611.72

Rancho Murieta Community Services District
County of Sacramento, California
ID 1 - Assessment District No. 1

8/1/2003 Billing Final Detail Report

Account ID	Property ID	Principal	Interest	Prorata	Statutory Coll. Fee	Misc Adj's	Total
073-0740-078-0000	073-0740-078-0000	612.43	167.56	(184.26)	16.00	(0.01)	611.72
073-0740-079-0000	073-0740-079-0000	612.43	167.56	(184.26)	16.00	(0.01)	611.72
073-0740-080-0000	073-0740-080-0000	816.58	223.42	(245.69)	16.00	(0.01)	810.30
073-0740-081-0000	073-0740-081-0000	816.58	223.42	(245.69)	16.00	(0.01)	810.30
073-0740-082-0000	073-0740-082-0000	408.29	111.71	(122.84)	16.00	0.00	413.16
073-0740-083-0000	073-0740-083-0000	408.29	111.71	(122.84)	16.00	0.00	413.16
073-0750-001-0000	073-0750-001-0000	408.29	111.71	(122.84)	16.00	0.00	413.16
073-0750-003-0000	073-0750-003-0000	408.29	111.71	(122.84)	16.00	0.00	413.16
073-0750-004-0000	073-0750-004-0000	408.29	111.71	(122.84)	16.00	0.00	413.16
073-0750-005-0000	073-0750-005-0000	408.29	111.71	(122.84)	16.00	0.00	413.16
073-0750-006-0000	073-0750-006-0000	408.29	111.71	(122.84)	16.00	0.00	413.16
073-0750-009-0000	073-0750-009-0000	408.29	111.71	(122.84)	16.00	0.00	413.16
073-0750-012-0000	073-0750-012-0000	408.29	111.71	(122.84)	16.00	10.36	423.52
073-0750-015-0000	073-0750-015-0000	408.29	111.71	(122.84)	16.00	0.00	413.16
073-0750-018-0000	073-0750-018-0000	408.29	111.71	(122.84)	16.00	0.00	413.16
073-0750-024-0000	073-0750-024-0000	408.29	111.71	(122.84)	16.00	0.00	413.16
073-0750-028-0000	073-0750-028-0000	408.29	111.71	(122.84)	16.00	0.00	413.16
073-0750-029-0000	073-0750-029-0000	408.29	111.71	(122.84)	16.00	0.00	413.16
073-0750-031-0000	073-0750-031-0000	408.29	111.71	(122.84)	16.00	0.00	413.16
073-0750-032-0000	073-0750-032-0000	408.29	111.71	(122.84)	16.00	0.00	413.16
073-0750-033-0000	073-0750-033-0000	408.29	111.71	(122.84)	16.00	0.00	413.16
073-0750-034-0000	073-0750-034-0000	408.29	111.71	(122.84)	16.00	0.00	413.16
073-0750-040-0000	073-0750-040-0000	408.29	111.71	(122.84)	16.00	0.00	413.16
073-0780-028-0000	073-0780-028-0000	775.75	212.25	(233.40)	16.00	0.00	770.60
073-0780-030-0000	073-0780-030-0000	775.75	212.25	(233.40)	16.00	0.00	770.60
073-0780-031-0000	073-0780-031-0000	775.75	212.25	(233.40)	16.00	0.00	770.60
073-0780-032-0000	073-0780-032-0000	775.75	212.25	(233.40)	16.00	0.00	770.60
073-0780-033-0000	073-0780-033-0000	775.75	212.25	(233.40)	16.00	0.00	770.60
073-0780-034-0000	073-0780-034-0000	775.75	212.25	(233.40)	16.00	0.00	770.60
073-0780-035-0000	073-0780-035-0000	775.75	212.25	(233.40)	16.00	0.00	770.60
073-0780-036-0000	073-0780-036-0000	775.75	212.25	(233.40)	16.00	0.00	770.60
073-0780-040-0000	073-0780-040-0000	775.75	212.25	(233.40)	16.00	0.00	770.60
073-0790-006-0000	073-0790-006-0000	61,816.96	16,913.12	(18,599.09)	16.00	(0.01)	60,146.98
073-0790-007-0000	073-0790-007-0000	66,704.32	18,250.30	(20,069.56)	16.00	0.00	64,901.06
073-0790-023-0000	073-0790-023-0000	174,875.86	47,846.04	(52,615.52)	16.00	0.00	170,122.38
073-0790-040-0000	073-0790-040-0000	6,723.72	1,839.61	(2,022.99)	16.00	0.00	6,556.34
073-0790-042-0000	073-0790-042-0000	32,070.16	8,774.40	(9,646.51)	7.53	0.00	31,205.58
073-0800-002-0000	073-0800-002-0000	109,096.15	29,848.71	(32,824.14)	16.00	0.00	106,136.72
073-0800-003-0000	073-0800-003-0000	143,080.25	39,146.76	(43,049.06)	16.00	(0.01)	139,193.94
073-0810-002-0000	073-0810-002-0000	447.55	122.45	(134.65)	16.00	(0.01)	451.34
073-0810-003-0000	073-0810-003-0000	447.55	122.45	(134.65)	16.00	(0.01)	451.34
073-0810-004-0000	073-0810-004-0000	447.55	122.45	(134.65)	16.00	10.35	461.70
073-0810-005-0000	073-0810-005-0000	447.55	122.45	(134.65)	16.00	(0.01)	451.34
073-0810-006-0000	073-0810-006-0000	447.55	122.45	(134.65)	16.00	(0.01)	451.34
073-0810-007-0000	073-0810-007-0000	447.55	122.45	(134.65)	16.00	(0.01)	451.34
073-0810-008-0000	073-0810-008-0000	447.55	122.45	(134.65)	16.00	(0.01)	451.34
073-0810-009-0000	073-0810-009-0000	447.55	122.45	(134.65)	16.00	(0.01)	451.34
073-0810-010-0000	073-0810-010-0000	447.55	122.45	(134.65)	16.00	(0.01)	451.34



Rancho Murieta Community Services District
County of Sacramento, California
ID 1 - Assessment District No. 1

8/1/2003 Billing Final Detail Report

Account ID	Property ID	Principal	Interest	Prorata	Statutory Coll. Fee	Misc Adjts	Total
073-0810-011-0000	073-0810-011-0000	447.55	122.45	(134.65)	16.00	(0.01)	451.34
073-0810-013-0000	073-0810-013-0000	447.55	122.45	(134.65)	16.00	(0.01)	451.34
073-0810-014-0000	073-0810-014-0000	447.55	122.45	(134.65)	16.00	(0.01)	451.34
073-0810-015-0000	073-0810-015-0000	447.55	122.45	(134.65)	16.00	(0.01)	451.34
073-0810-016-0000	073-0810-016-0000	447.55	122.45	(134.65)	16.00	(0.01)	451.34
073-0810-017-0000	073-0810-017-0000	447.55	122.45	(134.65)	16.00	(0.01)	451.34
073-0810-018-0000	073-0810-018-0000	679.48	185.90	(204.44)	16.00	0.00	676.94
073-0810-019-0000	073-0810-019-0000	447.55	122.45	(134.65)	16.00	(0.01)	451.34
073-0810-020-0000	073-0810-020-0000	447.55	122.45	(134.65)	16.00	(0.01)	451.34
073-0810-021-0000	073-0810-021-0000	447.55	122.45	(134.65)	16.00	(0.01)	451.34
073-0810-022-0000	073-0810-022-0000	447.55	122.45	(134.65)	16.00	(0.01)	451.34
073-0810-024-0000	073-0810-024-0000	447.55	122.45	(134.65)	16.00	(0.01)	451.34
073-0810-025-0000	073-0810-025-0000	447.55	122.45	(134.65)	16.00	(0.01)	451.34
073-0810-026-0000	073-0810-026-0000	447.55	122.45	(134.65)	16.00	(0.01)	451.34
073-0810-027-0000	073-0810-027-0000	447.55	122.45	(134.65)	16.00	(0.01)	451.34
073-0810-028-0000	073-0810-028-0000	447.55	122.45	(134.65)	16.00	(0.01)	451.34
073-0810-029-0000	073-0810-029-0000	447.55	122.45	(134.65)	16.00	(0.01)	451.34
073-0810-030-0000	073-0810-030-0000	447.55	122.45	(134.65)	16.00	(0.01)	451.34
073-0810-034-0000	073-0810-034-0000	447.55	122.45	(134.65)	16.00	(0.01)	451.34
073-0810-035-0000	073-0810-035-0000	447.55	122.45	(134.65)	16.00	(0.01)	451.34
073-0810-036-0000	073-0810-036-0000	447.55	122.45	(134.65)	16.00	(0.01)	451.34
073-0810-037-0000	073-0810-037-0000	447.55	122.45	(134.65)	16.00	(0.01)	451.34
073-0810-038-0000	073-0810-038-0000	447.55	122.45	(134.65)	16.00	(0.01)	451.34
073-0810-040-0000	073-0810-040-0000	447.55	122.45	(134.65)	16.00	(0.01)	451.34
073-0810-041-0000	073-0810-041-0000	447.55	122.45	(134.65)	16.00	(0.01)	451.34
073-0810-042-0000	073-0810-042-0000	447.55	122.45	(134.65)	16.00	(0.01)	451.34
073-0810-043-0000	073-0810-043-0000	447.55	122.45	(134.65)	16.00	(0.01)	451.34
073-0810-044-0000	073-0810-044-0000	447.55	122.45	(134.65)	16.00	(0.01)	451.34
073-0810-045-0000	073-0810-045-0000	447.55	122.45	(134.65)	16.00	(0.01)	451.34
073-0810-049-0000	073-0810-049-0000	447.55	122.45	(134.65)	16.00	(0.01)	451.34
073-0820-002-0000	073-0820-002-0000	447.55	122.45	(134.65)	16.00	(0.01)	451.34
073-0820-003-0000	073-0820-003-0000	447.55	122.45	(134.65)	16.00	(0.01)	451.34
073-0820-004-0000	073-0820-004-0000	447.55	122.45	(134.65)	16.00	(0.01)	451.34
073-0820-005-0000	073-0820-005-0000	447.55	122.45	(134.65)	16.00	(0.01)	451.34
073-0820-006-0000	073-0820-006-0000	447.55	122.45	(134.65)	16.00	(0.01)	451.34
073-0820-007-0000	073-0820-007-0000	447.55	122.45	(134.65)	16.00	(0.01)	451.34
073-0820-008-0000	073-0820-008-0000	447.55	122.45	(134.65)	16.00	(0.01)	451.34
073-0820-009-0000	073-0820-009-0000	447.55	122.45	(134.65)	16.00	(0.01)	451.34
073-0820-010-0000	073-0820-010-0000	447.55	122.45	(134.65)	16.00	(0.01)	451.34
073-0820-013-0000	073-0820-013-0000	447.55	122.45	(134.65)	16.00	(0.01)	451.34
073-0820-014-0000	073-0820-014-0000	447.55	122.45	(134.65)	16.00	(0.01)	451.34
073-0820-015-0000	073-0820-015-0000	447.55	122.45	(134.65)	16.00	(0.01)	451.34
073-0820-016-0000	073-0820-016-0000	447.55	122.45	(134.65)	16.00	(0.01)	451.34
073-0820-017-0000	073-0820-017-0000	447.55	122.45	(134.65)	16.00	(0.01)	451.34
073-0820-018-0000	073-0820-018-0000	447.55	122.45	(134.65)	16.00	(0.01)	451.34
073-0820-019-0000	073-0820-019-0000	447.55	122.45	(134.65)	16.00	(0.01)	451.34
073-0820-020-0000	073-0820-020-0000	447.55	122.45	(134.65)	16.00	(0.01)	451.34



Rancho Murieta Community Services District
County of Sacramento, California
ID 1 - Assessment District No. 1

8/1/2003 Billing Final Detail Report

Account ID	Property ID	Principal	Interest	Prorata	Statutory Coll. Fee	Misc Adjis	Total
073-0840-004-0000	073-0840-004-0000	572.68	156.69	(169.76)	0.13	0.00	559.74
073-0840-005-0000	073-0840-005-0000	572.68	156.69	(169.76)	0.13	0.00	559.74
073-0840-006-0000	073-0840-006-0000	572.68	156.69	(169.76)	0.13	0.00	559.74
073-0840-007-0000	073-0840-007-0000	572.68	156.69	(169.76)	0.13	0.00	559.74
073-0840-008-0000	073-0840-008-0000	572.68	156.69	(169.76)	0.13	0.00	559.74
073-0840-009-0000	073-0840-009-0000	572.68	156.69	(169.76)	0.13	0.00	559.74
073-0840-010-0000	073-0840-010-0000	572.68	156.69	(169.76)	0.13	0.00	559.74
073-0840-011-0000	073-0840-011-0000	572.68	156.69	(169.76)	0.13	0.00	559.74
073-0840-012-0000	073-0840-012-0000	572.68	156.69	(169.76)	0.13	0.00	559.74
073-0840-013-0000	073-0840-013-0000	572.68	156.69	(169.76)	0.13	0.00	559.74
073-0840-014-0000	073-0840-014-0000	572.68	156.69	(169.76)	0.13	0.00	559.74
073-0840-015-0000	073-0840-015-0000	572.68	156.69	(169.76)	0.13	0.00	559.74
073-0840-016-0000	073-0840-016-0000	572.68	156.69	(169.76)	0.13	0.00	559.74
073-0840-017-0000	073-0840-017-0000	572.68	156.69	(169.76)	0.13	0.00	559.74
073-0840-018-0000	073-0840-018-0000	572.68	156.69	(169.76)	0.13	0.00	559.74
073-0840-019-0000	073-0840-019-0000	572.68	156.69	(169.76)	0.13	0.00	559.74
073-0840-020-0000	073-0840-020-0000	572.68	156.69	(169.76)	0.13	0.00	559.74
073-0840-021-0000	073-0840-021-0000	572.68	156.69	(169.76)	0.13	0.00	559.74
073-0840-022-0000	073-0840-022-0000	572.68	156.69	(169.76)	0.13	0.00	559.74
073-0840-023-0000	073-0840-023-0000	572.68	156.69	(169.76)	0.13	0.00	559.74
073-0840-024-0000	073-0840-024-0000	572.68	156.69	(169.76)	0.13	0.00	559.74
073-0840-025-0000	073-0840-025-0000	572.68	156.69	(169.76)	0.13	0.00	559.74
073-0840-026-0000	073-0840-026-0000	572.68	156.69	(169.76)	0.13	0.00	559.74
073-0840-027-0000	073-0840-027-0000	572.68	156.69	(169.76)	0.13	0.00	559.74
073-0840-028-0000	073-0840-028-0000	572.68	156.69	(169.76)	0.13	0.00	559.74
073-0840-029-0000	073-0840-029-0000	572.68	156.69	(169.76)	0.13	0.00	559.74
073-0840-030-0000	073-0840-030-0000	572.68	156.69	(169.76)	0.13	0.00	559.74
073-0840-031-0000	073-0840-031-0000	572.68	156.69	(169.76)	0.13	0.00	559.74
073-0840-033-0000	073-0840-033-0000	572.68	156.69	(169.76)	0.13	0.00	559.74
073-0840-034-0000	073-0840-034-0000	572.68	156.69	(169.76)	0.13	0.00	559.74
073-0840-035-0000	073-0840-035-0000	572.68	156.69	(169.76)	0.13	0.00	559.74
073-0840-036-0000	073-0840-036-0000	572.68	156.69	(169.76)	0.13	0.00	559.74
073-0840-037-0000	073-0840-037-0000	572.68	156.69	(169.76)	0.13	0.00	559.74
073-0840-038-0000	073-0840-038-0000	572.68	156.69	(169.76)	0.13	0.00	559.74
073-0840-039-0000	073-0840-039-0000	572.68	156.69	(169.76)	0.13	0.00	559.74
073-0840-040-0000	073-0840-040-0000	572.68	156.69	(169.76)	0.13	0.00	559.74
073-0840-041-0000	073-0840-041-0000	572.68	156.69	(169.76)	0.13	0.00	559.74
073-0840-042-0000	073-0840-042-0000	572.68	156.69	(169.76)	0.13	0.00	559.74
073-0840-044-0000	073-0840-044-0000	572.68	156.69	(169.76)	0.13	0.00	559.74
073-0840-045-0000	073-0840-045-0000	572.68	156.69	(169.76)	0.13	0.00	559.74
073-0840-046-0000	073-0840-046-0000	572.68	156.69	(169.76)	0.13	0.00	559.74
073-0840-047-0000	073-0840-047-0000	572.68	156.69	(169.76)	0.13	0.00	559.74
073-0840-048-0000	073-0840-048-0000	572.68	156.69	(169.76)	0.13	0.00	559.74
073-0840-049-0000	073-0840-049-0000	572.68	156.69	(169.76)	0.13	0.00	559.74
073-0840-050-0000	073-0840-050-0000	572.68	156.69	(169.76)	0.13	0.00	559.74
073-0840-051-0000	073-0840-051-0000	572.68	156.69	(169.76)	0.13	0.00	559.74
073-0840-052-0000	073-0840-052-0000	572.68	156.69	(169.76)	0.13	0.00	559.74



Rancho Murieta Community Services District County of Sacramento, California ID 1 - Assessment District No. 1

8/1/2003 Billing Final Detail Report

Account ID	Property ID	Principal	Interest	Prorata	Statutory Coll. Fee	Misc Adj's	Total
073-0840-053-0000	073-0840-053-0000	572.68	156.69	(169.76)	0.13	0.00	559.74
073-0840-054-0000	073-0840-054-0000	572.68	156.69	(169.76)	0.13	0.00	559.74
073-0840-055-0000	073-0840-055-0000	572.68	156.69	(169.76)	0.13	0.00	559.74
073-0840-056-0000	073-0840-056-0000	572.68	156.69	(169.76)	0.13	0.00	559.74
073-0840-057-0000	073-0840-057-0000	572.68	156.69	(169.76)	0.13	0.00	559.74
073-0840-058-0000	073-0840-058-0000	572.68	156.69	(169.76)	0.13	0.00	559.74
073-0850-001-0000	073-0850-001-0000	572.68	156.69	(169.76)	0.13	0.00	559.74
073-0850-002-0000	073-0850-002-0000	572.68	156.69	(169.76)	0.13	0.00	559.74
073-0850-003-0000	073-0850-003-0000	572.68	156.69	(169.76)	0.13	0.00	559.74
073-0850-004-0000	073-0850-004-0000	572.68	156.69	(169.76)	0.13	0.00	559.74
073-0850-005-0000	073-0850-005-0000	572.68	156.69	(169.76)	0.13	0.00	559.74
073-0850-006-0000	073-0850-006-0000	572.68	156.69	(169.76)	0.13	0.00	559.74
073-0860-001-0000	073-0860-001-0000	589.27	161.23	(177.30)	16.00	0.00	589.20
073-0860-002-0000	073-0860-002-0000	589.21	161.21	(177.28)	16.00	0.00	589.14
073-0860-003-0000	073-0860-003-0000	589.21	161.21	(177.28)	16.00	0.00	589.14
073-0860-004-0000	073-0860-004-0000	589.21	161.21	(177.28)	16.00	0.00	589.14
073-0860-005-0000	073-0860-005-0000	589.21	161.21	(177.28)	16.00	0.00	589.14
073-0860-006-0000	073-0860-006-0000	589.21	161.21	(177.28)	16.00	0.00	589.14
073-0860-007-0000	073-0860-007-0000	589.21	161.21	(177.28)	16.00	0.00	589.14
073-0860-008-0000	073-0860-008-0000	589.21	161.21	(177.28)	16.00	0.00	589.14
073-0860-009-0000	073-0860-009-0000	589.21	161.21	(177.28)	16.00	0.00	589.14
073-0860-010-0000	073-0860-010-0000	589.21	161.21	(177.28)	16.00	0.00	589.14
073-0860-011-0000	073-0860-011-0000	589.21	161.21	(177.28)	16.00	0.00	589.14
073-0860-012-0000	073-0860-012-0000	589.21	161.21	(177.28)	16.00	0.00	589.14
073-0860-013-0000	073-0860-013-0000	589.21	161.21	(177.28)	16.00	0.00	589.14
073-0860-014-0000	073-0860-014-0000	589.21	161.21	(177.28)	16.00	0.00	589.14
073-0860-015-0000	073-0860-015-0000	589.21	161.21	(177.28)	16.00	0.00	589.14
073-0860-016-0000	073-0860-016-0000	589.21	161.21	(177.28)	16.00	0.00	589.14
073-0860-017-0000	073-0860-017-0000	589.21	161.21	(177.28)	16.00	0.00	589.14
073-0860-018-0000	073-0860-018-0000	589.21	161.21	(177.28)	16.00	0.00	589.14
073-0860-019-0000	073-0860-019-0000	589.21	161.21	(177.28)	16.00	0.00	589.14
073-0860-020-0000	073-0860-020-0000	589.21	161.21	(177.28)	16.00	0.00	589.14
073-0860-021-0000	073-0860-021-0000	589.21	161.21	(177.28)	16.00	0.00	589.14
073-0860-022-0000	073-0860-022-0000	589.21	161.21	(177.28)	16.00	0.00	589.14
073-0860-023-0000	073-0860-023-0000	589.21	161.21	(177.28)	16.00	0.00	589.14
073-0860-024-0000	073-0860-024-0000	589.21	161.21	(177.28)	16.00	0.00	589.14
073-0860-025-0000	073-0860-025-0000	589.21	161.21	(177.28)	16.00	0.00	589.14
073-0860-026-0000	073-0860-026-0000	589.21	161.21	(177.28)	16.00	0.00	589.14
073-0860-027-0000	073-0860-027-0000	589.21	161.21	(177.28)	16.00	0.00	589.14
073-0860-028-0000	073-0860-028-0000	589.21	161.21	(177.28)	16.00	0.00	589.14
073-0860-029-0000	073-0860-029-0000	589.21	161.21	(177.28)	16.00	0.00	589.14
073-0860-030-0000	073-0860-030-0000	589.21	161.21	(177.28)	16.00	0.00	589.14
073-0870-001-0000	073-0870-001-0000	589.21	161.21	(177.28)	16.00	0.00	589.14
073-0870-002-0000	073-0870-002-0000	589.21	161.21	(177.28)	16.00	0.00	589.14
073-0870-003-0000	073-0870-003-0000	589.21	161.21	(177.28)	16.00	0.00	589.14
073-0870-004-0000	073-0870-004-0000	589.21	161.21	(177.28)	16.00	0.00	589.14
073-0870-005-0000	073-0870-005-0000	589.21	161.21	(177.28)	16.00	0.00	589.14
073-0870-006-0000	073-0870-006-0000	589.21	161.21	(177.28)	16.00	0.00	589.14

