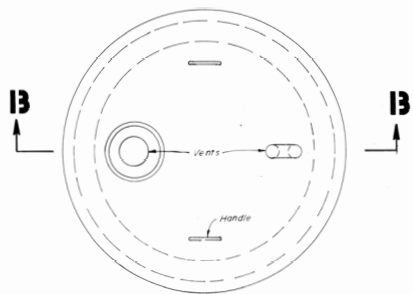
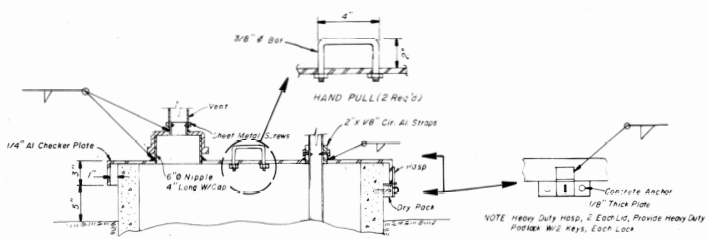


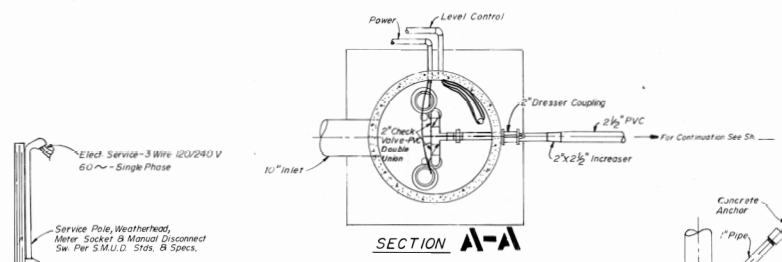
Att. D – Calero Dam Engineering Plan for subdrains



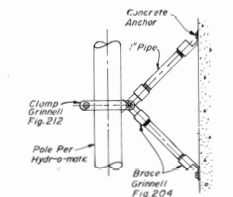
COVER-PLAN
1/2" = 1'



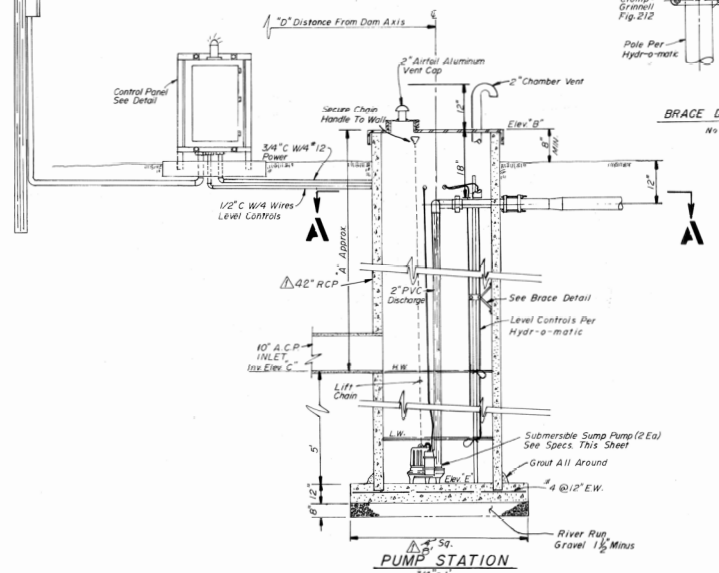
SECTION B-B
1/2" = 1'



SECTION A-A



BRACE DETAIL (As Req'd)
No Scale

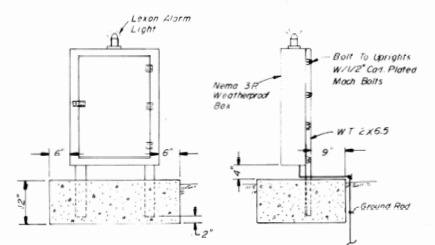


PUMP STATION
3/4" = 1'

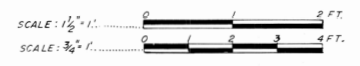
PUMP SPECIFICATIONS & TABLE OF DIMENSIONS

	MAIN DAM NORTH SUMP	MAIN DAM CENTER SUMP	EAST DAM SUMP
Minimum Pump Performance	10 GPM @ 30.2' TDH	30 GPM @ 21.1' TDH	15 GPM @ 42.1' TDH
Pump Manufacturer	Hydro-matic SP-334 V334P 3450 RPM	Hydro-matic SP-334 V334P 3450 RPM	Hydro-matic SP-304H V304P 3450 RPM
"A" Feet	-25.18.8	+4.11.4	+4.14.4
"B" Elev.	-263.263.6	-226.226.2	-26+261.4
"C" Elev.	-238.242.2	-242.216.0	-247
"D" Feet	120	+50.251	+30.126
"E" Elev.	-237.239.4	-204.211.8	-242.247.11
Pump Shut-off Elev.	-234.241.1	-209.213.2	-243.248.4
1st Pump Start Elev.	-236.242.3	-207.214.2	-245.249.6
2nd Pump Start Elev.	-237.243.4	-208.215.3	-246.250.0
Alarm Elev.	-238.244.0	-209.216.4	-247.251.6
Coordinates	North 18 629 29 331 001 83	18 008 15 312 206 21	18 608 33 313 136 88
East	88 490 18 281 310 23	87 085 37 281 002 31	85 332 88 280 344 24
OUTLET ELEV.	261.4	224.2	257.7

NOTE:
Elevations may vary. No equipment shall be ordered until elevations are verified during construction.



CONTROL PANEL
3/4" = 1'



RAYMOND VAIL & ASSOCIATES APPROVED	TERRARESEARCH INC. APPROVED	REVISION DATE DESCRIPTION 1 10-2-80 AS-BUILT	 SOIL, FOUNDATION AND GEOLOGICAL ENGINEERS SAN JOSE • SACRAMENTO • CONCORD	 RAYMOND VAIL AND ASSOCIATES ENGINEERING PLANNING SURVEYING	SACRAMENTO • ANTIUCH SONORA • TAHOE CITY	PROPOSED IMPROVEMENTS FOR GALERO DAM SUBDRAIN DUPLEX PUMP STATIONS	DATE FEB 1979 SCALE Shows	SHEET 17 OF 21 SHEETS
		HORIZONTAL VERTICAL W/O NO 1205.18C					FILE NO. E4 WJ 0 4	