



RANCHO MURIETA COMMUNITY SERVICES DISTRICT

15160 Jackson Road, Rancho Murieta, CA 95683

Office - 916-354-3700 * Fax - 916-354-2082

IMPROVEMENTS COMMITTEE

(Directors Randy Jenco and Bill Gere)

Special Meeting

June 10, 2026, at 8:00 a.m.

All persons present at District meetings will place their cellular devices in silent and/or vibrate mode (no ringing of any kind). During meetings, these devices will be used only for emergency purposes and, if used, the party called/calling will exit the meeting room for conversation. Other electronic and internet enabled devices are to be used in the "silent" mode. Under no circumstances will recording devices or problems associated with them be permitted to interrupt or delay District meetings.

AGENDA

1. Call to Order

2. Comments from the Public

If you wish to speak during Comments from the Public or would like to comment regarding an item appearing on the meeting agenda, please complete a public comment card and submit to the Board Secretary prior to Public Comments.

3. Improvements Staff Report

- A. *Discussion Item* **Working Vision Group Update**
- B. *Discussion Item* **Update Emergency Mainline Repair at Yellow Bridge**
- C. *Discussion Item* **Update on MEC Culvert Repair Progress**
- D. *Discussion Item* **Update on 14th Hole N Culvert Repair**
- E. *Discussion Item* **Veerkamp Master Services Agreement**
- F. *Discussion Item* **Annual Purchase for SCADA Software License from Rockwell Automation**
- G. *Discussion Item* **Three Year Proposal from Aquatic Harvesting for Lake Chesbro \$15,000 (Price Locked In for 3 years)**
- H. *Discussion Item* **Purchase from Muniqueip East DAF Recycle Pump \$9,780**
- I. *Discussion Item* **Multiple Storm Drainage Pipe Failure on North and South Golf Courses**
- J. *Discussion Item* **Purchase 2026 Cosumnes River Watershed Sanitary Survey Update \$37,990**
- K. *Discussion Item* **Update Lisa Maddaus and Jim Farrell Discussion on IWMP Draft**

4. Director and Staff Comments/Suggestions

5. Adjournment

"In accordance with California Government Code Section 54957.5, any writing or document that is a public record, relates to an open session agenda item and is distributed less than 24 hours prior to a special meeting, will be made available for public inspection in the District offices during normal business hours. If, however, the document is not distributed until the regular meeting to which it relates, then the document or writing will be made available to the public at the location of the meeting."



In compliance with the Americans with Disabilities Act if you are an individual with a disability and you need a disability-related modification or accommodation to participate in this meeting or need assistance to participate in this teleconference meeting, please contact the District Office at 916-354-3700 or dffleet@rmcsd.com. Requests must be made as soon as possible.

Note: This agenda is posted pursuant to the provisions of the Government Code commencing at Section 54950. Posting location is District Office. The date and time of this posting is June 4, 2026, at 4:00 p.m.

MEMORANDUM

Date: June 10, 2026

To: Improvements Committee

From: Travis Bohannon, Chief Plant Operator

Subject: Monthly Improvements Committee Updates

A. Working Vision Group Update:

This is an update for the Water Vision Working Group.

B. Update Emergency Mainline Repair at Yellow Bridge:

The repair is complete and all invoices have been received. Total cost was \$107,000.

C. Update on MEC Culvert Repair Project:

The district received multiple bids, and the job was awarded to M3 Construction. The project is scheduled to start on 7/1/26 and projected to be completed by 7/31/26.

D. Updated on 14th Hole Culvert Repair:

This project has been completed.

E. Veerkamp Master Services Agreement:

Veerkamp has submitted a master services agreement to the district and the district is asking the improvements committee to approve them as an emergency source.

F. Annual Purchase for SCADA Software License from Rockwell Automation:

Rockwell Automation has provided the annual quote for the SCADA software licenses for both the Water Plant and Wastewater Plant. The quoted amount is **\$12,251.39**. Staff recommend moving this item to the Board for approval.

G. Three Year Proposal from Aquatic Harvesting for Lake Chesbro:

The District performs annual aquatic harvesting in Lakes Chesbro and Clementia to help maintain water quality and manage aquatic vegetation. The District's current contractor has requested a three-year service commitment and has offered to hold the annual price constant for the duration of the agreement. The cost of the service will remain **\$15,000.00 per year**, billed annually, with a three-year commitment term. Locking in the current rate will provide cost stability and assist with long-term budgeting for these ongoing water quality management activities. Staff recommend moving this item to the Board for approval.

H. Purchase of Recycle Pump for East DAF from Muniquip:

One of the pumps for the East DAF at the wastewater plant is about to fail. It has been rebuilt over the years several times and is at its end of life. I would like to purchase another one and replace before the pump and motor completely give out. The cost for this is \$9,780. Staff recommend that this be moved to the board for approval.

I. Multiple Storm Drainage Pipe Failure on North and South Golf Courses

J. Purchase 2026 Rancho Murieta Watershed Sanitary Survey Update:

The State of California mandates that water districts update their watershed sanitary survey every 5 years. Our update is due by December 2026. I received 2 bids for this project, and it is recommended that we go with Verdantas Engineering for the cost of \$37,990. Staff recommend that this be moved to the board for approval.

K. Update on Lisa Maddaus and Jim Farrell Discussion regarding the Draft IWMP:

Amelia will give a verbal update on this item.



RMSCD Water Vision Working Group

Water Vision WG History

- Formed Nov'25 per direction from the CSD Board members:
 - R. Jenco (CSD Board Member), T. Bohanan (CSD Staff), A. Wilder (CSD Staff), J. Pearson (RMP Engineer), R. Hart → V. Lentz (RMA GM), T. Shewchuk (Community Rep).
- Dec'25 = Kick-off Meeting:
 - Intro's, Charter, R&Rs, brainstorm.
- Jan'25 = 1st Focused Meeting:
 - Wells (previous studies, WSC report, next steps), Lake Clementia Re-Permitting (brainstorm), UWMP Plan (how to engage), Water Audit (initial presentation).
- Feb'25 = 2nd Focused Meeting:
 - Wells (Dunn Geo-Physics Proposal, Site Prioritization, Schnieder Proposal), Lake Clementia Re-Permitting, Water Audit, UWMP Plan.
- May'25 = Update Meeting:
 - Meet with the new water attorney, however, she cancelled. The Group discussed all items in our charter.



RMSCD Water Vision Working Group

Wells = ~30% Complete

- **Completed:**
 - Review of 1988 & 2012 studies.
 - Support / Review of 2025 WSC study.
 - Prioritization of various potential sites. TH-A (Bre), TH-B (Bre), LSCE-1988 (County), & RM-5 (Carol) for potable water. RM-1 (RMA) & RM-6 (CSD) for irrigation water.
- **Within WVWG Charter Not Done:**
 - Dunn proposal for Geo-Physics study of additional potential sites in Village B (Carol), Village C (Carol), & retention pond near the Shell station (CSD).
 - Determination of well strategy = potable water, aquifer filling, irrigation of parks, add to RMCC lakes. Need legal advice.
 - How many wells = fire protection, drought protection, aquifer filling, new development. Together with IWMP WG. We believe ~1500 af/yr would be sufficient.
 - How to pay for it = grants, developer fees, reserves. Need staff to investigate potential grants.
- **Out of Scope:**
 - When should negotiation with Land Owners start (now, prior to TH drilling, prior to PW drilling, etc) = Legal track.
 - Test Well / Production Well Drilling = Improvements Committee / CSD Board.



RMSCD Water Vision Working Group

Lake Clementia = ~10% Complete

- **Completed:**
 - Brainstorm of options (potable no-body-contact), emergency potable body-contact, irrigation).
- **Within WVWG Charter Not Done:**
 - Legislative exemption = need to discuss with water attorney.
 - Explore options to allow recreational use during non-drought years. Then ban recreational activities during drought years = need to discuss with water attorney.
 - Begin conversations with others that allow body-contact recreation, i.e., Sly Park. But what about Folsom Lake that supports 100,000+ people = need to discuss with water attorney.
 - Or should we consider this for irrigation use only?
 - Begin evaluation of the infrastructure improvements to deliver water to the treatment plants, as well as the additional costs of treating it = CSD Operations.
- **Out of Scope:**
 - Actual Permitting = CSD Staff w/ legal track.



RMSCD Water Vision Working Group

UWMP / Water Audit = ~20% Complete

- Completed:
 - Requested WSC Bid = not interested due to bandwidth.
 - 2025 Residential Water Audit = Identified 50+ households with 0 water used for 2025.
 - Amelia prepared a bid request, to send out in June after most consultants are done with UWMP plans for other districts.
- Within WVWG Charter Not Done:
 - Resolution of 0 water use households = CSD Staff (Cory, Beverly).
 - Review of business usage = Tom + CSD Staff.
 - Travis reports 2933 connections. But we need to audit this (fire hydrants, Murieta Gardens that have 2 meters per house, how to count businesses, etc). We could be already over 3000 connects, or we could be ~2800.
 - Recommendation if we should complete a UWMP now or wait until we hit 3000 connections. Together with IWMP WG.
- Out of Scope:
 - IWMP Direction, either approve a portion of it, or ignore it all together = IWMP WG.
 - Tiered Billing Structure = need rate study (in 2026 budget) but will need input from the WVWG re usage.



RMSCD Water Vision Working Group

Other Water Topics NOT Chartered to the WVWG

- Water Tanks:
 - Location = thought we had a decision, but now being revisited.
 - Size = depends whether Rio Oso will stay online or not. Plus need water audit to finish.
 - Funding = split between developer fees & reserves.
- Recycled Water to Potable Water:
 - John brought this up as a potential option.
- Should WVWG tackle either of these topics?



RMSCD Water Vision Working Group

Backup



RMSCD Water Vision Working Group

Comparison of WSC Proposed vs Previous Drill Sites. All



RMSCD Water Vision Working Group

Next Steps with Property Owners of 4 drill sites. All

- We likely need to engage with a water attorney to consult with parcel creation / land purchase / easements / etc. !!! Patrick to provide a few names.
- Test Drills:
 - Carol (RM-5 Equestrian Center) = Jeff. Carol will review 1995 agreement.
 - County (LSCE-1988) = Randy, Jeff, would we want to re-test-drill ??? Dunn should chime in to this decision.
- Production Wells:
 - Bre & KT (TH-B) = Jeff. Bre & KT will review 1995 agreement.
 - Bre & KT (TH-A) = Jeff.
- Travis – need to use the water occasionally just to keep the well active, even when we don't need to use the well water.
- Jeff – need a hydrologist, & a civil engineer, & run this like a project that will be a significant effort that will take years.
- Randy – is it a water augmentation project or a capital improvement project? Amelia – it doesn't matter where the money comes from, it is still a CIP.
- Below ZBB:
 - RMA (RM-1 Stonehouse Park) = Rod ??? Or do we NOT do this ???
 - CSD (RM-6 CSD) = Travis ??? Or are we waiting on this one ???
 - Schneider (RM-3 S of River), or his other site further down-river ???
 - Bre & KT (EDE-1994 or EDE-1995/E) = ???
 - Any Others ???
 - Jeff has a potential in Village B.
 - Tom thinks there are other potential sites if the above don't pan out.



RMSCD Water Vision Working Group

Lake Clementia Permitting (for potable or irrigation). Amelia

- Meeting summary with DWR:
 - Might not be as hard as we thought.
 - Don't want to eliminate body contact always.
 - Off-the-record = Won't stop us from using the water in a severe drought.
- Legislative Exemption – **plan to use the same water attorney to make progress here:**
 - Amelia = Goal is to allow recreational use during non-drought years. Consider options to streamline the CEQA review. Begin conversations with others that allow body-contact recreation, i.e. Sly Park, Folsom Lake.
 - Travis = Begin evaluation of the infrastructure improvements to deliver water to the treatment plants, as well as the additional costs of treating it.
- Other thoughts:
 - Emergency irrigation water doesn't need any approval.
 - Early testing, should we do any of this now or wait until the permitting process starts ???



RMSCD Water Vision Working Group

2025 Water Usage Audit / Next Steps. Tom & Amelia

- Received monthly data of all CSD meter connections 2022-25.
- Initial analysis done for 2025 residential data (2725 addresses). Identified 2 addresses that are missing.
- Business data (122 connections) first audit done, Amelia / Travis resolving ~10 inconsistencies.
- CSD reports 2922 connections, I don't see this based on billings data (2849 is my current estimate).
- 45 addresses with no water usage in 2025. Another 78 with <6mo of water usage.
- Next Steps:
 - Amelia / Travis / Cory debugging business inconsistencies and resolving "no water usage" homes / addresses.
 - Need to resolve 2922 (CSD reported) vs 2849 (based on addresses) connections.
 - 2 meters @ 1 address? ADU? Multiple business connections @ 1 bill (ie RMCC).
- You can see where our heavy water users are !!! What do we do about this ???
- **Resolve inconsistencies & then bring recommendations to the board for next steps.**

RM Zones	Count	Average (gpd)	Max (gpd)	>615 gpd	>1230 gpd
Fairways	103	620	1549	49	5
North Back	750	444	1631	168	16
North Middle	335	426	3271	70	7
South	748	359	1945	76	6
North Front	369	281	1656	39	1
Gardens	78	221	441	0	0
Riverview	27	195	271	0	0
Retreats	83	110	246	0	0
Village	188	101	404	0	0
Villas	38	72	303	0	0
Residences	6	6	14	0	0
Total	2725			402	35



RMSCD Water Vision Working Group

Schnieder Idea to “augment” pumping permit. All

- He mentioned this BOTH in the 2/10 special meeting & 2/18 board meeting:
 - Don't think we should ignore this, as the community heard “free water”.
- Idea:
 - Modify our diversion permit during extreme droughts when we are not allowed to pump (either <70 cfs Nov.01 thru May.31 or any flow Jun.01 thru Oct.31).
 - Pump water out at Granlees Dam and augment it will well water pumped back into the river somewhere downstream.
- Augmentation:
 - 125hp pump @ Granlees Dam can pump ~2500 gpm. Have two 125hp pumps, plus three 500hp pumps at ~5500 gpm.
 - One well South of Hwy.16 can pump 300 gpm. So, 8 ~300 gpm wells would be needed to balance a 125hp pump @ Granlees Dam.
- Do we want to proceed with this ???
 - Travis / Amelia to listen to Schnieder in an upcoming meeting. Jeff P happy to attend.



RMSCD Water Vision Working Group

IWMP approval vs UWMP engagement. All

- Randy already reached out to WSC, & they declined due to their workload:
 - But since a UWMP isn't truly required until 1y after we hit the 3000-connection threshold, might their workload be lower sometime in the future ???
 - They stated they would provide a list of other consultants to contact. Have they ???
- Other thoughts:
 - When should we really get started on this ???
 - Does approval of a portion of the draft IWMP have any impact when we start this ???
 - Amelia to find example RFP's to get started ???
- Next steps:
 - Amelia to release an RFP for an UWMP. Would like WSC to bid on it.

MEMORANDUM

To: Improvements Committee
From: Amelia Wilder, Interim General Manager
Date: June 10, 2026

Subject: Summary of Water Vision Group Tasks Assigned by the Board

Purpose

This memorandum summarizes the tasks assigned by the Board to the Water Vision Group and documents the scope of work directed through Board discussions, committee actions, and meeting proceedings.

Background

At the October 3, 2025, Special Board Meeting, the Board approved forming what was then called the Water Development Committee. The stated purpose came from Director Jenco's proposal for a committee to facilitate WSC's effort to find water, including participation by members of the public and developers. Director Merchant motioned and Direct Butler second the motion and it passed to form the Water Development Committee, chaired by Director Jenco and attended by Travis Bohannon, five community members, and developers. **Transcribe October 3, 2026.** District Staff advertised on the RMCS D website for volunteers. **Website October 20, 2025**

At the October 15, 2025, Board Meeting, that concept was reframed as the Water Vision Working Group. Director Jenco explained that the name "Water Vision" came from WSC's scope of work, which was called the Water Vision Project. District Counsel advised that if it were an ad hoc committee, it could not include public members, therefore the structure became a working group instead of a formal ad hoc committee. **Transcript October 15, 2025.**

Then, at the November 19, 2025, Board Meeting, the Board approved the actual Water Vision Working Group members. Director Jenco stated that the group included people with "a wealth of knowledge about the history and the current ownership of the properties that WSC is going to be looking at," and then moved that the group be comprised of Director Jenco, Tom Shewchuk, Jeff Pearson, Travis Bohannon, and Rod Hart. Director Merchant second the motion and it passed. **Transcribe November 19, 2025**

Since January 2026, the Board has assigned a series of water-planning, resource-evaluation, and strategic-development tasks to the Water Vision Group. These assignments have expanded the group's role beyond long-range planning to include analysis of water-supply alternatives, infrastructure planning, water-use evaluation, and support for ongoing master-planning efforts.

Summary of Assigned Tasks

1. Lake Clementia and Backup Water Supply Evaluation the Water Vision Group was tasked with evaluating Lake Clementia as a potential drinking-water and emergency water source. Work includes baseline water-quality testing, sanitary-survey considerations, permitting requirements, CEQA and legislative review, and potential irrigation applications. **Transcribe January 21, 2026**
2. Recycled Water and Purple-Pipe Alternatives the Board directed the group to evaluate recycled-water opportunities, including the use of purple-pipe systems in future developments, golf-course irrigation alternatives, and the feasibility of using Lake Clementia or recycled water for non-potable purposes. The group was also asked to assess whether consultant support would be needed for system modeling and analysis. **Transcribe January 21, 2026**
3. Urban Water Management Planning Additional assignments included supporting and expediting development of the Urban Water Management Plan. Discussions with Water Systems Consulting (WSC) determined that WSC lacked capacity to undertake the work, resulting in the RFQ/RFP process being reassigned to District staff. **Transcribe February 18, 2026**
4. District Water-Use Audit the Board requested a comprehensive review of District water use, including analysis of where water is being delivered, whether current allocations are appropriate, and how large-volume users utilize water resources. Initial work on this effort was reported as already underway. **Transcribe February 18 and May 27, 2026**
5. Integrated Water Master Plan (IWMP) Support The group was asked to review and utilize relevant information from the draft Integrated Water Master Plan and support Board discussions regarding future completion and implementation of the IWMP. **Agenda April 15, 2016**
6. Well-Siting Evaluation and Recommendations the Water Vision Group reviewed candidate well locations, compared findings from multiple studies and investigations, and evaluated potential drilling sites. The group recommended additional analysis in selected areas before advancing drilling recommendations. The established review process includes consideration by the Water Vision Group, followed by the Improvements Committee, and then the Board prior to expenditure of funds. **Transcribe May 27, 2026**
7. Documentation of Group Scope, History, and Progress the Board directed staff to compile documentation regarding the Water Vision Group's objectives, assigned tasks, completion status, and historical member-selection process. This effort is intended to improve transparency and provide a clear record of the group's purpose and accomplishments. **Transcribe May 27, 2026**

Conclusion

The Board's assignments reflect a broad mandate for the Water Vision Group to support strategic water-resource planning, evaluate future supply alternatives, assist with master-planning initiatives, and provide recommendations regarding water infrastructure and policy decisions. Continued tracking of task completion and reporting to the Board will help ensure accountability and alignment with District objectives.

Staff created the following Matrix per Board direction. It is organized by Task and then chronologically.

The Task Groups are:

- Groundwater
- Lake Clementia
- Other

RMCS D Water Strategy Task-Level Matrix											
Task	Description	Current Owner	Status	Proposed Owner (WVG/Legal/Staff /Consultant)	Priority	Timeline	Dependencies	Output	Next Action	Decision Gate	Source / Notes
GROUNDWATER											
Update well / water augmentation assumptions and annual review cycle	Test the five-well assumption, expected yield, total cost, developer share, SB 552 secondary-source needs, and recommended frequency for fee-study updates.	Water Vision WG + WSC + Operations + Finance + Legal	In Progress	Consultant	High	Short-Mid	WSC data; Cantova test-well yield reference; SB 552 requirements; \$15.225M growth-share estimate; \$20,436.24 proposed augmentation fee.	Well/augmentation assumptions memo and fee-study update protocol.	Confirm test-well program, probable cost range, and whether annual/every-other-year fee updates are needed.	Board accepts augmentation assumptions for revised fee study.	Nov. 19 transcript lines 157-160, 168-169, 181-201, 279-280.
Explore groundwater recharge / water banking partnership	Coordinate with Sloughhouse Resource Conservation District on potential recharge project using permitted water, grant opportunities, and recovery/credit rules.	GM + Water Vision WG + Legal + Sloughhouse RCD	Planning	Staff	Medium	Mid-Ongoing	District diversion permit; recharge feasibility; grant criteria; accounting/recovery rules; location constraints.	Recharge feasibility concept paper and grant opportunity list.	Clarify what water can be diverted, where recharge could occur, and what extraction credit the District could rely on.	Board authorizes grant/feasibility partnership or closes concept.	Nov. 19 transcript lines 544-545 and 952-953.
Advance WSC groundwater / well investigation	Analyze prior well studies, identify candidate sites, and evaluate groundwater feasibility.	Water Vision WG (Jenco, Shewchuk, Pearson, Bohannon, Hart) + WSC + Operations	In Progress	Consultant/Staff	High	Short-Mid	WSC final site report; six possible sites; priority-site ranking; test-drilling specifications; landowner access/easements; water ownership and first-use questions; disputed AF/year target.	Test-well bid package, site access matrix, and capacity-target memo.	Receive WSC specs, select priority test sites, reconcile capacity target, and confirm land/easement/water rights before drilling authorization.	Board authorizes drilling scope, access agreements, and funding after professional target reconciliation.	Updated Jan. 21: final WSC report was received Jan. 12; six sites were identified, likely narrowed toward three; 3,000 AF/year target was questioned against actual demand.
Convert WSC final site report into test-well bid package	Turn the WSC final site report and test-drilling specifications into a procurement-ready package.	Water Vision WG + WSC + Operations + Legal	In Progress	Consultant/Staff	High	Short	WSC Jan. 12 final report; specifications promised in January; site ranking; land access/easements; water ownership and first-use questions; Board funding authority.	Bid package, priority-site map, access/easement matrix, and drilling scope.	Receive WSC specifications, confirm roughly three priority sites, verify access/water-right issues, and route a bid package through staff/legal.	Board authorizes drilling package, access agreements, and funding.	Added Jan. 21: WSC reported six possible sites, likely narrowed to three; committee added a south golf-course site for recycled-water augmentation consideration.
Obtain WSC site plan/specs and close Feb. deliverable gap	Escalate and receive the final WSC site plan/specifications that were expected but not delivered by the Feb. 18 Board meeting.	Water Vision WG + Operations + WSC	Complete		High	Short	WSC final site report; prior promise of specs; test-well bid package requirements.	Final site plan/specs, comments log, and procurement-ready scope.	Follow up with WSC, document any missing deliverables, and circulate final package to the WG and Board packet.	Board confirms whether WSC deliverables are accepted or whether a different consultant path is needed.	Added Feb. 18: WG reported the final site plan/specs were still not received and WSC refused to remove the 3,000 AF reference. Source S41.

RMCS D Water Strategy Task-Level Matrix											
Task	Description	Current Owner	Status	Proposed Owner (WVG/Legal/Staff /Consultant)	Priority	Timeline	Dependencies	Output	Next Action	Decision Gate	Source / Notes
Route WSC draft test-drilling specifications through Improvements	Review WSC draft specifications and prepare a proper bid/authorization path for any test drilling.	Water Vision WG + Operations + Improvements + WSC	In Progress	Staff	High	Short	WSC draft specifications; test-site screening; procurement requirements.	Board-ready recommendation and bid package scope.	Present WSC specs to Improvements, capture comments, and return with a drilling authorization package if appropriate.	Board confirms whether WSC specs are accepted and whether drilling is authorized.	Added Mar. 18: WSC finally provided draft specifications for test drilling; they are to be presented to Improvements. Source S47.
Evaluate NV5 pre-drilling geophysical survey near Clementia Dam	Assess NV5 SR/ERI survey proposal as a lower-cost way to focus future test drilling near Clementia Dam and existing infrastructure.	Water Vision WG + Operations + Improvements + NV5	Complete	WVG/Staff	High	Short	NV5 presentation; WSC draft specs; Clementia Dam proximity; Improvements Committee review.	Survey recommendation, cost estimate, and priority exploration map.	Put NV5 presentation and survey alternatives on the next Improvements Committee agenda.	Board decides whether to fund NV5 exploration before test drilling.	Added Mar. 18: WG reported NV5 proposed additional exploration near Clementia Dam and SR vs. ERI survey options. Source S47.
Document Schneider/private-well free-water proposal as non-viable under current river permit	Close the loop on the private-well replenishment concept and retain the analysis in the alternatives file.	Water Vision WG + Legal + Operations	Complete	Staff	High	Short	Water-right permit terms; minimum 70 CFS river-flow rule; 6 CFS diversion cap between 70 and 175 CFS; downstream offset uncertainty.	Alternatives memo entry and regulatory rationale.	Add the 70 CFS permit analysis to the alternative-supply screening memo and public fact base.	No Board action unless new legal/regulatory facts are presented.	Added Mar. 18: WG concluded the private-well/off-stream replenishment proposal is not a viable drought backup because the District cannot divert below 70 CFS. Source S48.
Re-scope Dunn/NV5/Terracon geophysical survey after legal-access prerequisites	Use Dunn/NV5/Terracon ERI/SR proposal and map as technical input, but pause execution until property access, easements, cost share, and groundwater-priority questions are resolved.	Water Vision WG + Operations + Legal + NV5/Terracon	Complete		High	Short	Landowner access; property ownership; transport easements; water ownership/priority; cost allocation; water attorney review.	Revised geophysical exploration decision package with legal conditions and go/no-go recommendation.	Ask water attorney to review access/ownership issues and prepare a revised board package if the survey is revived.	Board decides whether to bring Dunn/NV5/Terracon survey back for approval after legal prerequisites.	Added Apr. 15: Dunn/Terracon proposed electrical resistivity and seismic refraction work, but Board did not approve the proposal pending legal/access concerns. Sources S58, S61.
Incorporate WSC RM1-RM6 siting results into groundwater decision package	Convert the May 27 WSC screening-level siting presentation into a ranked candidate-site package using yield, geology, floodplain, conveyance, access, ownership and water-quality factors.	Water Vision WG + Operations + WSC + Water Attorney	In Progress	Staff	High	Short	WSC May 27 presentation; RM1-RM6 site notes; Dunn/LSCE/TH data; legal access/easements; target-capacity reconciliation.	Ranked candidate-site matrix and drilling recommendation.	Combine WSC with Dunn, LSCE, TH-A/TH-B and local access data; explain why each site should advance, be held, or be rejected.	Board/Improvements approves sites, legal path and funding before drilling.	S69-S71

RMCS Water Strategy Task-Level Matrix											
Task	Description	Current Owner	Status	Proposed Owner (WVG/Legal/Staff /Consultant)	Priority	Timeline	Dependencies	Output	Next Action	Decision Gate	Source / Notes
LAKE CLEMENTIA											
Build Clementia potable-backup pathway staff report and action package	Define community/recreational-use implications and the full testing, permit, consulting, cost, timeline, and conveyance pathway needed to evaluate Clementia as a drinking-water backup source.	Operations + Legal + GM + Water Vision WG	In Progress	Staff	High	Short	State/DDW requirements; body-contact restrictions; RMA/community outreach; Giardia/crypto/E. coli and broader sampling protocol; permit modification; conveyance options.	Clementia process map, sampling plan, permit path, cost estimate, consultant scope, and outreach plan.	Return a staff report with process, timeline, testing scope, body-contact ordinance/resolution options, consultant needs, and conveyance alternatives.	Board approves or rejects Clementia testing/permit work and body-contact action.	Updated Dec. 17: staff was directed to identify steps/cost/timeline; discussion included testing before permit amendment, human-contact restrictions, RMA impacts, and conveyance options.
Prepare Clementia body-contact / RMA decision package	Define what must happen before testing can begin, including human body-contact restrictions, RMA/community process, and possible ordinance or resolution.	GM + Legal + Operations + RMA + Communications	In Progress	Staff	High	Short	State/DDW guidance; RMA coordination; recreation policy; sampling lead time; community outreach.	Body-contact policy options, ordinance/resolution draft, outreach plan, and testing start criteria.	Confirm how long body contact must cease before sampling and draft Board/RMA action path.	Board/RMA decide whether to suspend body contact and start potable-source testing.	Dec. 17 transcript: testing cannot begin until the body-contact issue is addressed; RMA and community impacts were discussed.
Develop Clementia testing, permit, and conveyance scope	Prepare full process, timeline, cost and consulting plan for Clementia potable/emergency use, including simultaneous permit amendment and water-movement options.	Operations + Legal + Engineering + Consultant TBD	In Progress	Consultant	High	Short-Mid	Sampling analytes; permit modification; water-law/engineering support; old pump system; temporary pump/raw-water line option; watershed/grazing data.	Clementia process map, timeline, cost estimate, consultant scope, and conveyance alternatives.	Return staff report with steps, timeline, cost, tests, permit path, and consultant/attorney needs.	Board approves consultant scope/testing budget and whether to proceed.	Dec. 17 transcript: discussed Giardia/crypto/E. coli, permit amendment, old pump system, temporary pump/raw-water line, and consultant/attorney needs.
Scope Clementia permit, testing, and special-legislation cost gate	Define the decision gate for Lake Clementia before spending significant money on testing, permits, consultant work, or legislation.	Water Vision WG + Legal + Operations + Water Attorney/Consultant TBD	In Progress	Consultant/Staff	High	Short-Mid	DWR/DDW permit path; baseline and seasonal testing; no-body-contact policy; possible retesting after application; RMA/recreation use; special legislation; CEQA; Permit 16762; conveyance options.	Clementia cost/timeline memo and go/no-go decision package.	Estimate the cost, sequence, and likelihood of testing/permit/special-legislation steps and determine whether to proceed now or wait for well results.	Board chooses between potable-source pursuit, irrigation/severe-drought use, deferral, or removal from near-term options.	Added Jan. 21: discussion identified likely DDW/DWR application requirements, repeated-testing risk, about \$10k baseline testing, and no-body-contact/exemption concerns.

RMCS D Water Strategy Task-Level Matrix											
Task	Description	Current Owner	Status	Proposed Owner (WVG/Legal/Staff /Consultant)	Priority	Timeline	Dependencies	Output	Next Action	Decision Gate	Source / Notes
Evaluate Lake Clementia as potable / backup source	Engineering, regulatory, community-use, treatment, water-right/license, special-legislation, and conveyance feasibility for using Clementia beyond recreation/irrigation limits.	Operations + Engineering + DDW coordination	In Progress	Consultant/Staff	High	Short	DWR/DDW permit path; no-body-contact policy; seasonal/baseline testing; possible retesting after application; RMA/community use; special legislation/CEQA; Permit 16762; consultant/water attorney.	Clementia go/no-go cost/timeline memo and test/permit sequence.	Estimate testing, DWR/DDW application, special legislation/CEQA, water attorney, and consultant cost/timeline before committing to source conversion.	Board decides whether to fund baseline testing/permit work now, wait for WSC well results, or pursue irrigation-only/severe-drought use.	Updated Jan. 21: approximately 20 tests at multiple locations and about \$10k baseline cost were discussed; DDW/DWR likely require application before committing resources and may require retesting.
Update Clementia regulatory path and sanitary-survey scope	Translate Water Resources feedback into a decision path for potable, irrigation-only, and legislative Clementia uses.	Water Vision WG + Operations + Legal + Compliance Consultant	In Progress	Consultant/Staff	High	Short	SWRCB/Water Resources meeting; no-body-contact issue; 2026 sanitary survey; consultant quotes; legislative examples.	Clementia regulatory memo, sanitary-survey scope, quote set, and route comparison.	Get quotes for adding Clementia to the 2026 sanitary survey and prepare a path comparison for potable/no-body-contact, irrigation, and legislation.	Board chooses whether to fund survey/testing/legislation work and whether to pursue an irrigation-only interim option.	Added Feb. 18: Water Resources said no-body-contact would be required for potable permitting; irrigation use would not require the same permit; Clementia can be added to the 2026 sanitary survey. Source S41.
OTHER											
Evaluate recycled-water conveyance as water augmentation offset	Revisit recycled-water conveyance to villages/Bass Lake/Stonehouse Park, including realistic yield, purple-pipe constraints, golf-course commitments, and updated cost estimate.	Operations + Engineering + Water Vision WG + Legal	Planning	Consultant/Staff	High	Mid	AECOM 2014 study; demand/yield assumptions; RMA potable irrigation use; ENR escalation; developer benefit analysis.	Recycled-water alternatives and cost-allocation memo.	Update 2014 cost basis, quantify potable offset, and decide whether/how it belongs in water augmentation fee.	Board determines whether to include in fee study or separate project pipeline.	Nov. 19 transcript lines 220-245 and 286-288.
Identify additional water sources / partnerships	Screen regional partnerships, surface water options, transfers, and other backup sources.	Water Vision WG + GM + Legal	In Progress	Staff	High	Mid	WSC results; agency contacts; water rights screening; reliability criteria.	Source alternatives memo.	Create screening criteria and list of potential regional partners/options.	Select options for feasibility-level review.	January 21, 2026; Complements WSC and Clementia source work.

RMCS D Water Strategy Task-Level Matrix											
Task	Description	Current Owner	Status	Proposed Owner (WVG/Legal/Staff /Consultant)	Priority	Timeline	Dependencies	Output	Next Action	Decision Gate	Source / Notes
Develop Water Contingency Plan	Drought, emergency, SB 552, conservation, communications, and source-response planning tied to local reservoir/pumping realities.	GM + Water Vision WG + Operations + Legal	In Progress	Legal/Consultant	High	Short	2012 plan; SB 552 abridged-plan requirement; six-stage standard; reservoir/pumping triggers; 3,000-connection threshold; emergency-hearing record; demand projections.	Updated abridged Water Shortage Contingency Plan and trigger/action table.	Assign drafting lead and adapt six-stage SB 552/UWMP-style language to RMCS D's limited source/intertie reality.	Board adopts updated abridged WSCP and schedules future full plan when 3,000-connection threshold is reached.	Updated Jan. 21: 2012 plan has not been updated for SB 552; staff/Board discussed adopting abridged plan now and preparing a full plan around 2028/3,000 connections.
Reconcile well-capacity target and supply-demand assumptions	Resolve the disputed AF/year and GPM target for groundwater before test drilling and alternatives comparison.	WSC + Water Vision WG + Operations + Finance + Legal	Planning	Consultant	High	Short	2025 production; WSC report; IWMP/Mattis data; current and buildout demand; drought/conservation assumptions; existing/entitled units; emergency-storage policy.	Agreed AF/year and GPM target range for wells and backup supply planning.	Ask WSC or another water engineer to reconcile actual use, buildout, historic drought, and reliability targets before the Board funds drilling.	Board accepts a target range and applies it to WSC drilling, Clementia, recycled-water, and contingency-plan work.	Added Jan. 21: WSC's 3,000 AF/year number was questioned; 2025 use was reported under 1,600 AF, and public/committee comments asked for engineering reconciliation.
Secure test-well access, easement, and water-law agreement support	Prepare agreements for test wells at Equestrian Center and county park locations and evaluate production wells at Dunn-report locations.	Water Vision WG + Legal + Operations + Water Attorney	In Progress	Legal	High	Short-Mid	County/landowner interest; 1994 Anderson/CSD test-drilling agreement; Dunn report; WSC site screening.	Access/easement/payment agreement framework and priority test-well list.	Ask legal counsel to identify water-law experts and begin landowner/county access conversations.	Board authorizes water-law consultant, access negotiations, and drilling budget.	Added Feb. 18: WG recommended two test-well sites and production-well follow-up, but noted CSD does not own the land and needs agreement expertise. Source S42.
Prepare UWMP / Water Supply Assessment RFP and threshold audit	Move Urban Water Management Plan / WSA readiness from WSC to staff-led RFP/RFQ and verify the reported connection threshold.	GM + Operations + Legal + Finance	Planning	Consultant	High	Short-Mid	WSC declined additional UWMP task; 3,000 connection threshold; reported 2,922 connections; consultant bandwidth cycle.	RFP/RFQ package, consultant list, timing memo, and connection-count audit.	Draft RFQ/RFP, identify firms, verify 2,922 count against households/businesses, and consider post-June release when consultants have capacity.	Board decides RFP timing and whether UWMP/WSA work starts before or after the statewide June reporting cycle.	Added Feb. 18: WSC was too busy for UWMP work; staff will prepare an RFQ/RFP; speakers distinguished UWMP from IWMP and questioned the connection count. Sources S41/S43.
Create water-use audit and net consumptive-use model	Audit all District water use and distinguish metered use, return flows, RMA/irrigation use, and net consumptive use for planning and education.	Water Vision WG + GM + Operations + Finance	Planning	Consultant	High	Short	Meter data; billing exports; wastewater inflow data; RMA accounts; residential/business usage; conservation assumptions.	Water-use audit spreadsheet, net consumptive-use estimate, and public education dashboard.	Compile meter/billing and wastewater data, map major users and return flows, and create an explainable spreadsheet model.	Board accepts audited baseline for demand forecast, UWMP/WSA, and source-target decisions.	Added Feb. 18: WG member proposed treating water like money and auditing all water usage; public comment also urged net consumptive-use analysis. Source S43.

RMCS Water Strategy Task-Level Matrix											
Task	Description	Current Owner	Status	Proposed Owner (WVG/Legal/Staff /Consultant)	Priority	Timeline	Dependencies	Output	Next Action	Decision Gate	Source / Notes
Reconcile 3,000 AF target, dead storage, and legacy water-study data	Resolve conflicting numbers before they drive WSC, emergency, fee, or UWMP decisions.	Operations + Water Vision WG + Legal + Records Staff	Planning	Consultant	High	Short	WSC 3,000 AF reference; 2016 WSA math; 1977-79 records; storage/dead-storage data; bathymetric studies; public records requests.	Baseline water-data reconciliation memo with source citations.	Trace 3,000 AF origin, reconcile dead-storage values, and locate legacy EID/SWRCB/water-order records for the data room.	Board adopts a baseline dataset and removes unsupported assumptions from public planning materials.	Added Feb. 18: speakers disputed the 3,000 AF target, raised 84/87 vs. 315 AF dead-storage discrepancies, and requested old water-order/study records. Sources S36/S41/S43.
Resolve well property, easement, ownership, water allocation, and cost-share questions before drilling	Answer key legal and financial questions before putting drills in the ground.	Legal + Water Attorney + Board + Water Vision WG + Finance	Pending Board Direction	Legal	High	Short	Water attorney engagement; private land access; developer/ratepayer cost allocation; pump/pipe/easement requirements.	Well agreement framework, cost-allocation memo, and Board decision checklist.	Retain water-law counsel and prepare a decision memo covering property, easements, ownership, infrastructure, allocation, and funding responsibility.	Board approves legal framework and funding/cost allocation before physical drilling.	Added Mar. 18: Board members raised ownership, easement, pump/infrastructure, allocation, and \$50M-scale well-cost concerns; resolution was withdrawn/table/no vote. Source S49.
Execute water-law counsel contract and first legal workplan	Finalize contract with Jennifer Buckman/BKS and define first advisory tasks for wells, Clementia, water rights, 670 FSA/rate work, emergency procurement, and IWMP/data reconciliation.	Legal + Board President + GM + Water Vision WG	Complete	Staff	High	Short	Closed-session negotiation; counsel scope; pending WSC/Dunn/R2026-08/IWMP questions; legal budget.	Water-attorney engagement letter and first legal-workplan memo.	Negotiate and approve/ratify scope, then hold kickoff with GM, Operations, Finance, Legal, and Water Vision WG.	Board authorizes/ratifies scope, budget, and first legal priorities.	Added Apr. 15: District selected Jennifer Buckman of BKS Law Firm for contract negotiation; legal gate affects well, Clementia, 670 FSA, IWMP, and cost-allocation work. Sources S57, S61.
Draft test-well access, ownership, easement, cost-allocation, and priority-use framework	Translate R2026-08 concepts into a negotiated template for any test well or active well agreement before physical drilling.	Legal + Water Attorney + GM + Board + Landowners	In Progress	Legal	High	Short	WSC test-well siting study; private/county/public parcels; water attorney contract; geophysical and drilling sequence.	Board-ready test-well agreement template and landowner term sheet.	Use R2026-08 as checklist; separate technical drilling scope from legal and financial obligations.	Board approves template terms before authorizing drilling or permanent infrastructure.	Added Apr. 15: R2026-08 identified ownership, access, maintenance, transport easements, District-owned pumps/infrastructure, cost allocation, and priority of use as required terms. Source S59.

RMCS Water Strategy Task-Level Matrix											
Task	Description	Current Owner	Status	Proposed Owner (WVG/Legal/Staff /Consultant)	Priority	Timeline	Dependencies	Output	Next Action	Decision Gate	Source / Notes
Reconcile IWMP/Maddaus and Working Group supply-demand data	Resolve disagreements between the draft IWMP and Water Vision/Working Group analysis, especially chapters 4 and 5 on supply and demand.	Water Vision WG + Lisa Maddaus + Jim Farrell + GM	In Progress	Consultant	High	Short	Draft IWMP; Working Group report; development assumptions; reservoir/dead-storage data; updated usage and growth data.	Agreement/contention memo and scope to complete or revise the IWMP.	Arrange Maddaus/Farrell meeting and return a concise comparison of agreed facts and disputed assumptions.	Board decides whether and how to complete the IWMP after reconciliation.	Added Apr. 15: Board discussed reconciling IWMP data with Working Group concerns and returning agreed/disputed points. Source S60.
Resolve groundwater capacity target and multi-well/recharge strategy	Reconcile the disputed 3,000 AF/year planning target with actual demand, drought-year operation, pumping capacity, storage constraints, multiple smaller wells, non-potable offsets and wet-year recharge.	Water Vision WG + Operations + Finance + Legal	Planning	Consultant	High	Short	Supply/demand model; WSC/Dunn assumptions; storage limits; pumping/conveyance costs; legal rights and priority-of-use terms.	Capacity-target memo with AF/year, GPM, seasonal operation and recharge assumptions.	Translate AF/year needs into operating scenarios and decide whether to pursue dispersed wells, non-potable offsets and bidirectional recharge.	Board accepts target before spending on drilling/geophysics.	S71-S72 January 21, 2026, February 18, 2026 and May 27, 2026
Evaluate RM1 Stonehouse Park / RM6 golf-lake non-potable alternatives	Assess whether RM1 and RM6 can provide non-potable irrigation/recycled-water offsets that reduce potable demand or improve recycled-water storage flexibility.	Water Vision WG + Operations + RMA/Country Club	Planning	Staff/Consultant	High	Short-Mid	RM1/RM6 access; water-quality testing; irrigation rules; recycled-water routing; RMA/Country Club coordination.	Non-potable offset feasibility memo.	Quantify potable demand offset from Stonehouse Park and golf-course/recycled-water sharing options.	Board decides whether test wells should target potable backup or irrigation/recycled offsets.	S70-S74 November 19, 2025 and May 27, 2026
Convert Water Vision workstreams into fiscal / infrastructure / legal responsibility matrix	Build the board-requested matrix dividing water-supply/demand work into fiscal, infrastructure and legal categories with owner, public process, dependency and decision-gate columns.	Improvements Committee + GM + Board + Legal	In Progress	WVG	High	Short	Water Vision task history; board member inputs; June Improvements Committee; legal advice; budget/CIP data.	Fiscal-infrastructure-legal water workstream matrix.	Gather tasks, objectives, status/completion and director inputs; create matrix for Improvements and Board review.	Board approves workstream allocation and public-process path.	S72 May 27, 2026
Clarify Water Vision Working Group charter/status and public-process interface	Compile the original formation, tasks, objectives, member-selection approach and completed/remaining work for the Water Vision Working Group.	GM + Board + Legal + Water Vision WG	Pending Board Direction	WVG/Staff	High	Short	Original motions; task list; WSC presentation; Brown Act/public-meeting advice; Improvements Committee role.	Charter/status memo and remaining-task list.	Staff gathers historical documents and identifies which tasks are complete, ongoing or should shift to public committee process.	Board decides whether to continue, limit, disband or move tasks to Improvements.	S72, S80 May 27, 2026



APS Environmental, Inc.
6643 32nd Street, Suite 101
North Highlands CA 95660
(916) 348-2800
Info@apsenvironmental.com

Invoice

DATE	05/26/2026
INVOICE #	40045158
TERMS	NET 60

BILL TO

Rancho Murieta CSD
15160 Jackson Rd.
Rancho Murieta, Ca, 95683

SERVICE LOCATION

Rancho Murieta CSD
Ponds
15160 Jackson Rd.
Rancho Murieta, Ca, 95683

JOB#	JOB START DATE	PURCHASE ORDER	WORK DESCRIPTION
1013087075	05/17/2026	C35636	<p>PREVAILING WAGE - Emergency fee \$350 \$425.00 per truck, per hour, port to port Fuel Surcharge \$425.00 Broken 12"-15" sewer main.</p> <p>Completion Notes: Mark - Left the yard at 8:30am. Arrived on site at 10:00am. Left the site 1:30am. Arrived back to the yard at 2:30am. Pumped from a manhole and dumped at treatment plant to relieve pump station while it was turned off until the pipe repair could be done.</p> <p>Dan - Left the yard at 5:45pm. Arrived on site at 7:15am. Left the site at 12:30am. Arrived back to the yard at 1:45am. Pumped manhole, dumped on site.</p> <p>Bob - Left the yard at 8:00am. Arrived on site at 9:00am. Left the site at 1:30am. Arrived back to the yard at 2:30am. Pumped manhole, dumped on site.</p>

Description	Qty	Rate	Tax	Total
Othr-Emergency Fee Emergency Fee: after hours and/or weekend charge	1.00	\$350.00	\$0.00	\$350.00
Othr-Vac Truck Hourly Other - Vacuum Truck Per Hour (Port to Port)	18.00	\$425.00	\$0.00	\$7,650.00
Othr-Vac Truck Hourly Other - Vacuum Truck Per Hour (Port to Port)	8.00	\$425.00	\$0.00	\$3,400.00
Othr-Vac Truck Hourly Other - Vacuum Truck Per Hour (Port to Port)	18.50	\$425.00	\$0.00	\$7,862.50
O-Fuel Surcharge Fuel Surcharge	1.00	\$425.00	\$0.00	\$425.00

Invoice Total:	\$19,687.50
Payments (-):	\$0.00
Total Due:	\$19,687.50



Wastewater Hauler Load Manifest

CLIENT INFORMATION

Rancho Murieta CSD
Paul Siebensohn
15160 Jackson Rd.
Rancho Murieta, Ca, 95683
(916) 354-3700

AP@rmcsd.com

Pumped Date:	05/26/2026	Manifest Number:	40045158
Site Address:	15160 Jackson Rd., Rancho Murieta, Ca, 95683	Waste Type:	Other
Truck License:		Disposal Site:	
CDFA Number:		Gallons Discharged:	

I hereby certify the information listed within this manifest is true and correct to the best of my knowledge. I further certify that the materials delivered at this time contain only those materials listed above and as certified to the customer certification directly above, and to the best of my knowledge, does not contain hazardous waste as defined by the E.P.A.

Field Technician: Dan

Certified Date: 05/26/2026

Coastline Water Resources, Inc
 PO Box 796
 Roseville, CA 95678
 916 923-3437

Work Order Invoice 9209

Date: 05/17/26

Bill to: RMCS D P.O. Box 1050 Rancho Murieta, CA 95683	Job Address: ER-CALL Sewer Overflow
---------------------------------------------------------------------	--------------------------------------------

Customer Code	Payment Terms	Customer PO Number	Quote	Type	Page
085	Net 30			T	1
Remarks: ER-CALL Sewer Overflow WO# 9209					

Description of Work Completed

DSR_RMCS 1 ER-CALL Sewer Overflow - 15160 Jackson Road _Saturday 05-17-26
 WO: 9209
 Crew: H-13 Espiridion Licea / ---
 Foreman: () -
 Superintendent: () -
 Scope of Work: ER- CALL Sewer Overflow (Sunday)
 Sewer Completed LF:
 Storm Completed LF:
 DI's Completed:
 Laterals Completed:
 Manholes Inspected:
 Notes/Job Delays: dewatered over 30 loads of live sewage from lift stations to waste water treatment plant.
 Potholing/Hydro-Excavation:
 Remaining:

Labor & Equipment Used

Week ending 05/23/26	Sun 5/17	Mon 5/18	Tues 5/19	Wed 5/20	Thur 5/21	Fri 5/22	Sat 5/23	Total Hours	Rate	Extension
LABOR USED	17.00							17.00	575.00	9,775.00

Invoice Totals:	Labor	Material	Other	9,775.00
	9,775.00	0.00	0.00	

Invoice Total: **9,775.00**

DATE OF REPORT: 5/27/26

FIELD INSTRUCTION NUMBER _____

PC NUMBER _____

WORK PERFORMED BY: 5/17/2026-5/18/2026

5/27/2026

CONTRACT NO : _____

DESCRIPTION OF WORK: TNT Industrial Contractors Inc

REPORT SUMMARY NUMBER _____

CONTRACTOR JOB NO 6782

Sewer main repair

CONTRACTOR REPORT NO 1

REPORT #	DESCRIPTION	TO DATE	AMOUNT	TOTAL AMOUNT TO DATE	\$	66,863.69
1	Sewer main repair		\$ 58,554.32			
2	Repair 2" line and connect to main, backfill and compact		\$ 7,289.51			
3	Demobilize and haul materials to landfill		\$ 1,019.86			



Contractor's License No. 622974

Phone (916) 395-8400 • FAX (916) 395-8429
3600 51st Avenue • Sacramento, CA 95823

05/17/26
Date: into the 18th

Work Order #: 6782-001

DAILY TIME AND MATERIAL REPORT

Project Name: Rancho Murieta Emergency Pipe Repair At Hwy 16 Customer Order #: Travis/Corey

Description of Work: Excavate /Pot Hole with Vac Trucks and add New 2 inch Saddle to 12 inch AC Pipe

LABOR, GRADE AND CLASS	EMPLOYEE NAME	# OF HOURS			RATE PER HOUR			TOTAL
		S.T.	1.5x	2x	S.T.	1.5x	2x	
Project Man.	Josh Twist			16				
Supt	Richard Stent			17				
Pipe Fit Form	Jesse Krpan			10				
Pipe Fit Form	Brandon Ferreira			12				
Lab Foreman	Mario Chavez			16				
Lab Foreman	Jared Bonds			17				
J-Carp	Raymond Gettler			17				
Appt Laborer	Jesse Murchinson			17				
TOTAL LABOR								

EQUIPMENT	HOURS	DAILY RATE	AMOUNT
TNT Truck #22,40,37,	17		
PM Truck	16		
Truck #55	10		
Flatbed Truck with sand bags No Number on Truck (Brandon Drove)	12		
TOTAL EQUIPMENT			

MATERIALS/SUBCONTRACTORS	P.O./INVOICE NO.	QUANTITY	UNIT PRICE	AMOUNT
Vacume Trucks	At repair site	3 ea		
Traffic Control with 3 ea Light Towers				
5 Gal Diesel to Vac Trailer Owner Supplied				
2 Rooms at Rancho Murieta Inn And Spa	Still awaiting Receipt Via E-Mail		Approx. \$171.00x 2	
TOTAL MATERIALS/SUBCONTRACTORS				

Submitted By: Richard Stent
Job Foreman

Approved By: Travis /Corey Carskddon
Customer

Date: 05-17,18 -2026

Date: 05-17,18 -2026



Finished Work Order Invoice

Nor-Cal Pipeline Services
 983 Reserve Drive
 Roseville, CA 95678

Invoice #: 8438

Invoice Date: 5/17/26

Terms: 2% 10 Net 30

Work Order 8556

Job: Emergency RMCSD MLN	Bill To: TNT Industrial Contractors Inc 3800 Happy Lane Sacramento, CA 95827
------------------------------------	----------------------------------------------------------------------------------------------

JOB NUMBER: SA25603
 CONTACT:
 TECHNICIAN: Darryl L. Gaines
 Nathan Ryan

JOB SITE PHONE:
 JOB NUMBER: SA25603

CUSTOMER PO #: PO# 6782
 WORK DATE: 05/17/26

LABOR & MATERIALS USED:

Date	Time	Technician	Phase	CT	Hours	Rate	Extension
05/17/26	14:30	02:00	CHIES001	1000 - Labor	L		
05/17/26	09:00	19:30	GAIN001	1000 - Labor	L		
05/17/26	19:30	01:00	GAIN001	1000 - Labor	L		
05/17/26	09:00	19:30	RYAN001	1000 - Labor	L		
05/17/26	19:30	01:00	RYAN001	1000 - Labor	L		
LABOR TOTAL:							0.00

TNT INDUSTRIAL
 CONTRACTORS, INC.

MAY 22 2026

RECEIVED

Qty	UM	Item	Phase	CT	Price	Total
15.00	HR	COMBODT - Combo Clean DT	1020 - Equipment	E	420.00	6,300.00
15.00	HR	COMBODT - Combo Clean DT	1020 - Equipment	E	420.00	6,300.00
11.00	HR	COMBODT - Combo Clean DT	1020 - Equipment	E	420.00	4,620.00
MATERIALS TOTAL:						17,220.00

Item	Phase	CT	Total
FS10 - 10% Fuel Surcharge	1040 - Other Costs	O	1,722.00
OTHER TOTAL:			1,722.00

CUSTOMER SUB TOTAL: 18,942.00
 SALES TAX:
 INVOICE TOTAL: 18,942.00



Invoice

Right Traffic California LLC (Formerly WBE Traffic LLC)
 5150 Fair Oaks Blvd. , Ste.101-362
 Carmichael, CA 95608
 707-771-5870

Date	Invoice #
5/17/2026	RCA9506
Terms	
NET 30	

Bill To
TNT Industrial Contractors, Inc. 3800 Happy Lane Sacramento, CA 95827
Job Location
RANCHO MURIETA COUNTRY CLUB JACKSON RD RANCHO MURIETA, CA 95683 Sacramento County

Qty	Description	Work Order/Ticket	Rate	Amount
17.00	5/17/2026 TRAFFIC CONTROL- TYPICAL: SUN/HOL RATE - 2 FLAGGERS - HOURLY RATE	Emgerncy	375.00	6375.00
1.00	5/17/2026 MISSED MEAL PER 2 FLAGGERS	Emgerncy	125.00	125.00
Total				\$6,500.00


TNT INDUSTRIAL
 CONTRACTORS, INC.

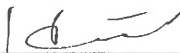
MAY 20 2026

RECEIVED

Remittance address:
Right Traffic California LLC (Formerly WBE Traffic LLC)
ATT: Accounts Receivable
1200 Sharon Rd.
Suite 1
Beaver, PA 15009

Date	05/17/2026	Work Order #	Emergency
Client	TNT Industrial Contractors, Inc.	Contract #	2572
			TNT Industrial Contractors, Inc
Foreman	TWIST, JOSH	Requested By	TWIST, JOSH
Job Location	RANCHO MURIETA COUNTRY CLUB JACKSON RD RANCHO MURIETA, CA 95683 (Sacramento County, LIUNA North)		
Meeting Location	RANCHO MURIETA COUNTRY CLUB JACKSON RD RANCHO MURIETA, CA 95683		

Name	Charge Type	Start Time	Start Break	End Break	End Time	Reg	OT	DT	Total
BENITEZ, ANDRES	Traffic Control	9:00AM	---	---	2:00AM	0.00	0.00	17.00	17.00
	Missed Meal Charge	12:00AM	---	---	12:30AM	0.00	0.00	0.50	0.50
	Missed Meal Charge	12:00AM	---	---	12:30AM	0.00	0.00	0.50	0.50
	Totals					0.00	0.00	18.00	18.00

Name	Charge Type	Start Time	Start Break	End Break	End Time	Reg	OT	DT	Total
VALERO, HECTOR	Missed Meal Charge	12:00AM	---	---	12:30AM	0.00	0.00	0.50	0.50
	Traffic Control	9:00AM	---	---	2:00AM	0.00	0.00	17.00	17.00
	Missed Meal Charge	12:00AM	---	---	12:30AM	0.00	0.00	0.50	0.50
	Totals					0.00	0.00	18.00	18.00

Additional Charges

Name	Charge Type	Quantity
RCA-112	Work Truck - Daily	1.00

Notes

[Field Note] 1097@9:25am and 1098@1:15am light towers 1019 and 1030 left on site turned on around work site with customer.

Signatures

Date

CrewLead Signature

BENITEZ, ANDRES

05/18/2026



Josh Twist

From: rick stent
Sent: Wednesday, May 20, 2026 7:28 AM
To: Josh Twist
Cc: Maria Arreigue
Subject: FW: The Murieta Inn and Spa – Reservation Folio

Internal (rstent@tntindustrial.com)

[Safe](#) [Spam](#) [Phish](#) [More...](#) [FAQ](#) [Protection by INKY](#)

T&M Rancho Cordova 6782-001

From: The Murieta Inn and Spa <admin@cloudbeds.com>
Sent: Wednesday, May 20, 2026 7:24 AM
To: rick stent <rstent@tntindustrial.com>
Subject: The Murieta Inn and Spa – Reservation Folio

The Murieta Inn and Spa

Thank you for choosing The Murieta Inn and Spa for your stay. For your convenience, your hotel folio is included below.

Josh Twist

From: rick stent
Sent: Wednesday, May 20, 2026 7:27 AM
To: Josh Twist
Cc: Maria Arreigue
Subject: FW: The Murieta Inn and Spa – Reservation Folio

Internal (rstent@tntindustrial.com)

[Safe](#) [Spam](#) [Phish](#) [More...](#) [FAQ](#) [Protection by INKY](#)

T&M Rancho Cordova 6782-001

From: The Murieta Inn and Spa <admin@cloudbeds.com>
Sent: Wednesday, May 20, 2026 7:22 AM
To: rick stent <rstent@tntindustrial.com>
Subject: The Murieta Inn and Spa – Reservation Folio

The Murieta Inn and Spa

Thank you for choosing The Murieta Inn and Spa for your stay. For your convenience, your hotel folio is included below.

Richard Joseph Stent

505XU7TS33

CHECKED OUT

The Murieta Inn and Spa
7337 Murieta Drive
Rancho Murieta California 95683
916.354.3900
FrontDesk@MurietaInn.com

Email rstent@tntindustrial.com
Phone 916-529-3874

Street Address 12209 Sunset Ave
City Grass Valley
Province / State California
Postal / ZIP Code 95945

RES ID	DATE/TIME	NAME	TYPE	QUANTITY	DEBIT	CREDIT
505XU7TS33	05/18/2026	Richard Joseph Stent	Room rate - Balcony Two Queen 225		\$190.00	\$0.00
505XU7TS33	05/18/2026	Richard Joseph Stent	Transient Occupancy Tax 225		\$22.80	\$0.00
505XU7TS33	05/18/2026	Richard Joseph Stent	Resort 225		\$12.00	\$0.00
505XU7TS33	05/18/2026	Richard Joseph Stent	CA Tourism 225		\$0.37	\$0.00

505XU7TS33 05/18/2026	Richard Joseph Stent	Credit Card 225	\$0.00	\$225.17
-----------------------	----------------------	-----------------	--------	----------

Total	USD 225.17	USD 225.17
-------	------------	------------

	TOTAL
Deposit	\$0.00
Subtotal	\$190.00
Additional Items	\$0.00
Transient Occupancy Tax	\$22.80
CA Tourism	\$0.37
Resort	\$12.00
Grand Total:	\$225.17
Amount Paid	\$225.17
Balance Due	\$0.00

If you have any questions or concerns regarding your folio, please contact us.

Jared Bonds

505JV941K3

CHECKED OUT

The Murieta Inn and Spa
7337 Murieta Drive
Rancho Murieta California 95683
916.354.3900
FrontDesk@MurietaInn.com

Email rstent@tntindustrial.com
Phone 916-395-8400

Street Address 1046 Bear Paw Rd
City Camdenton
Province / State Missouri
Postal / ZIP Code 65020

RES ID	DATE/TIME	NAME	TYPE	QUANTITY	DEBIT	CREDIT
505JV941K3	05/19/2026	Jared Bonds	Credit Card 217		\$0.00	\$248.17
505JV941K3	05/18/2026	Jared Bonds	Room rate - Balcony King 217		\$190.00	\$0.00
505JV941K3	05/18/2026	Jared Bonds	Transient Occupancy Tax 217		\$22.80	\$0.00
505JV941K3	05/18/2026	Jared Bonds	Resort 217		\$12.00	\$0.00
505JV941K3	05/18/2026	Jared Bonds	CA Tourism 217		\$0.37	\$0.00
505JV941K3	05/18/2026	Jared Bonds	Chow Mein 217	1	\$4.64	\$0.00
505JV941K3	05/18/2026	Jared Bonds	Sales Tax Inclusive		\$0.36	\$0.00

		For Marketplace 217			
505JV941K3 05/18/2026	Jared Bonds	Mission Cocktails 217	1	\$18.00	\$0.00
			Total	USD 248.17	USD 248.17

		TOTAL
	Deposit	\$0.00
	Subtotal	\$190.00
	Additional Items	\$22.64
	Sales Tax Inclusive For Marketplace	\$0.36
	Transient Occupancy Tax	\$22.80
	CA Tourism	\$0.37
	Resort	\$12.00
	Grand Total:	\$248.17
	Amount Paid	\$248.17
	Balance Due	\$0.00

If you have any questions or concerns regarding your folio, please contact us.

Network: May 19, 2026 at 2:43:13 PM PDT
Local: May 19, 2026 at 2:43:13 PM PDT

KIEFER LANDFILL FACILITY
HOURS: MON-FRI 6:30 AM-4:30 PM
SAT-SUN 8:30 AM-4:30 PM
INFORMATION: 916-875-5555

Weighed: 1043926
Deposit: 1047665

BILL TO: 21910
TNT INDUSTRIAL CONTRACTORS
3800 HAPPY LN
SACRAMENTO CA 95827

HAULER: CASH CUSTOMER
Vehicle ID:
Reference: #40
Grid: M-1L
REMARK: EP17413

Origin: SACRAMENTO, COUNTY OF
DATE IN: 05/19/2026 TIME IN: 09:54:00
DATE OUT: 05/19/2026 TIME OUT: 10:18:23

INBOUND TICKET Number: 02-26072384

SCALE 3 GROSS WT.	18900	LB
SCALE 2 TARE WT.	15720	LB
NET WEIGHT	3180	LB

Qty	Description	Amount
1.59	Normal Refuse	97.55

TICKET AMOUNT: 97.55

X _____

Emergency Main Line Break North of Yellow Bridge

May May 24th – 25th, 2026

Travis Bohannon	20 hours	\$2500
Corey Carskaddon	17.9 hours	\$1955
Andrew Harre	7.0 hours	\$561
Kevin Todd	18.25 hours	\$1255
Cory Xavier	11 hours	\$1050
James Colas	8 hours	\$472
Phil Davis	13.62 hours	\$645
Boby Stoffel	22.58 hours	\$1175
Oscar Ceja	8.12 hours	\$250

Total \$9,863

Rancho Murieta Community Services District
Services Agreement

This Agreement is entered into as of the date last signed and dated below by and between Rancho Murieta Community Services District, a local government agency ("District"), and

Doug Veerkamp General Engineering, Inc., a CA Corporation
[Insert type and jurisdiction of entity] ("Contractor"), who agree as follows:

1 Scope of Work

Contractor shall perform the work and render the services described in the attached Exhibit A (the "Work"). Contractor shall provide all labor, services, equipment, tools, material and supplies required or necessary to properly, competently and completely perform the Work. Contractor shall determine the method, details and means of doing the Work.

2 Payment

2.1 District shall pay to Contractor a fee based on [check one]:

Contractor's time and expenses necessarily and actually expended or incurred on the Work in accordance with Contractor's fee schedule on the attached Exhibit A.

The fee arrangement described on the attached Exhibit A.

There shall be no compensation for extra or additional work or services by Contractor unless approved in advance in writing by District. Contractor's fee includes all of Contractor's costs and expenses related to the Work.

2.2 At the end of each month, Contractor shall submit to District an invoice for the Work performed during the preceding month. The invoice shall include a brief description of the Work performed, the dates of Work, number of hours worked and by whom (if payment is based on time), payment due, and an itemization of any reimbursable expenditures. If the Work is satisfactorily completed and the invoice is accurately computed, District shall pay the invoice within 30 days of its receipt.

3 Term

3.1 This Agreement shall take effect on the above date and continue in effect until completion of the Work, unless sooner terminated as provided below. Time is of the essence in this Agreement. If Exhibit A includes a Work schedule or deadline, then Contractor must complete the Work in accordance with the specified schedule or deadline, which may be extended by District for good cause shown by Contractor. If Exhibit A does not include a Work schedule or deadline, then Contractor must perform the Work diligently and as expeditiously as possible, consistent with the professional skill and care appropriate for the orderly progress of the Work.

3.2 This Agreement may be terminated at any time by District upon 10 days advance written notice to Contractor. In the event of such termination, Contractor shall be

fairly compensated for all work performed to the date of termination as calculated by District based on the above fee and payment provisions. Compensation under this section shall not include any termination-related expenses, cancellation or demobilization charges, or lost profit associated with the expected completion of the Work or other such similar payments relating to Contractor's claimed benefit of the bargain.

4 Professional Ability of Contractor

4.1 Contractor represents that it is specially trained and experienced, and possesses the skill, ability, knowledge and certification, to competently perform the Work provided by this Agreement. District has relied upon Contractor's training, experience, skill, ability, knowledge and certification as a material inducement to enter into this Agreement. All Work performed by Contractor shall be in accordance with applicable legal requirements and meet the standard of care and quality ordinarily to be expected of competent professionals in Contractor's field.

[The paragraphs in section 4.2 can be replaced with "*Intentionally omitted*" if the District is not requiring the Contractor to designate key personnel.]

4.2 *Intentionally omitted.*

5 Conflict of Interest

5.1 Contractor (including principals, associates and professional employees) represents and acknowledges that (a) it does not now have and shall not acquire any direct or indirect investment, interest in real property or source of income that would be affected in any manner or degree by the performance of Contractor's services under this agreement, and (b) no person having any such interest shall perform any portion of the Work. The parties agree that Contractor is not a designated employee within the meaning of the Political Reform Act and District's conflict of interest code because Contractor will perform the Work independent of the control and direction of the District or of any District official, other than normal contract monitoring, and Contractor possesses no authority with respect to any District decision beyond the rendition of information, advice, recommendation or counsel.

5.2 Contractor's duties and services under this Agreement shall not include preparing or assisting District with any portion of District's preparation of a request for proposals, request for qualifications, or any other solicitation regarding a subsequent or additional contract with District. District shall at all times retain responsibility for public contracting, including with respect to any subsequent phase of the work contemplated herein. Contractor's participation in the planning, discussions, or drawing of project plans or specifications shall be limited to conceptual, preliminary, or initial plans or specifications. Contractor shall cooperate with District to ensure that all bidders for a subsequent contract on any subsequent phase, if any, of work contemplated herein have access to the same information, including all conceptual, preliminary, or initial plans or specifications, if any, prepared by Contractor pursuant to this Agreement.

6 Contractor Records

6.1 Contractor shall keep and maintain all ledgers, books of account, invoices, vouchers, canceled checks, and other records and documents evidencing or relating to the

Work and invoice preparation and support for a minimum period of three years (or for any longer period required by law) from the date of final payment to Contractor under this Agreement. District may inspect and audit such books and records, including source documents, to verify all charges, payments and reimbursable costs under this Agreement.

6.2 In accordance with California Government Code section 8546.7, the parties acknowledge that this Agreement, and performance and payments under it, are subject to examination and audit by the California State Auditor for three years following final payment under the Agreement.

7 Ownership of Documents

All works of authorship and every report, study, spreadsheet, worksheet, plan, design, blueprint, specification, drawing, map, photograph, computer model, computer disk, magnetic tape, CAD data file, computer software and any other document or thing prepared, developed or created by Contractor under this Agreement and provided to District ("Work Product") shall be the property of District, and District shall have the rights to use, modify, reuse, reproduce, publish, display, broadcast and distribute the Work Product and to prepare derivative and additional documents or works based on the Work Product without further compensation to Contractor or any other party. Contractor may retain a copy of any Work Product and use, reproduce, publish, display, broadcast and distribute any Work Product and prepare derivative and additional documents or works based on any Work Product; provided, however, that Contractor shall not provide any Work Product to any third party without District's prior written approval, unless compelled to do so by legal process. If any Work Product is copyrightable, Contractor may copyright the same, except that, as to any Work Product that is copyrighted by Contractor, District reserves a royalty-free, nonexclusive and irrevocable license to use, reuse, reproduce, publish, display, broadcast and distribute the Work Product and to prepare derivative and additional documents or works based on the Work Product. If District reuses or modifies any Work Product for a use or purpose other than that intended by the scope of work under this Agreement, then District shall hold Contractor harmless against all claims, damages, losses and expenses arising from such reuse or modification. For any Work Product provided to District in paper format, upon request by District at any time (including, but not limited to, at expiration or termination of this Agreement), Contractor agrees to provide the Work Product to District in a readable, transferable and usable electronic format generally acknowledged as being an industry-standard format for information exchange between computers (e.g., Word file, Excel spreadsheet file, AutoCAD file).

8 Confidentiality of Information

[The paragraphs in this section can be replaced with the phrase "Intentionally omitted" if the District will not provide any confidential information to the Contractor.]

8.1 Contractor shall keep in strict confidence all confidential, privileged, trade secret, and proprietary information, data and other materials in any format generated, used or obtained by the District or created by Contractor in connection with the performance of the Work under this Agreement (the "Confidential Material"). Contractor shall not use any Confidential Material for any purpose other than the performance of the Work under this Agreement, unless otherwise authorized in writing by District. Contractor also shall not disclose any Confidential Material to any person or entity not connected with the

performance of the Work under this Agreement, unless otherwise authorized in advance in writing by District. If there is a question if Confidential Material is protected from disclosure or is a public record or in the public domain, the party considering disclosure of such materials shall consult with the other party concerning the proposed disclosure.

8.2 Contractor, and its officers, employees, agents, and subcontractors, shall at all times take all steps that are necessary to protect and preserve all Confidential Material. At no time shall Contractor, or its officers, employees, agents, or subcontractors in any manner, either directly or indirectly, use for personal benefit or divulge, disclose, or communicate in any manner, any Confidential Material to any person or entity unless specifically authorized in writing by the District or by order of a court or regulatory entity with jurisdiction over the matter. Contractor, and its officers, employees, agents, and subcontractors shall protect the Confidential Material and treat it as strictly confidential in accordance with applicable law, District policies and directives, and best industry security practices and standards.

8.3 If any person or entity, other than District or Contractor, requests or demands, by subpoena, discovery request, California Public Records Act request or otherwise, Confidential Material or its contents, the party to whom the request is made will immediately notify the other party, so that the parties may collectively consider appropriate steps to protect the disclosure of those materials. The parties agree to take all steps reasonably necessary to preserve the confidential and privileged nature of the Confidential Material and its content. In the event that the parties cannot agree whether to oppose or comply with a disclosure demand, the opposing party may oppose the demand at its sole cost and expense, in which event the party favoring disclosure will refrain from disclosing the demanded Confidential Material until such time as a final agreement regarding disclosure is reached or, if an agreement is not reached, a judicial determination is made concerning the demand.

8.4 Unless otherwise directed in writing by the District, upon contract completion or termination, Contractor must destroy all Confidential Materials (written, printed and/or electronic) and shall provide a written statement to the District that such materials have been destroyed.

9 Compliance with Laws

9.1 General. Contractor shall perform the Work in compliance with all applicable federal, state and local laws and regulations. Contractor shall possess, maintain and comply with all federal, state and local permits, licenses and certificates that may be required for it to perform the Work. Contractor shall comply with all federal, state and local air pollution control laws and regulations applicable to the Contractor and its Work (as required by California Code of Regulations title 13, section 2022.1). Contractor shall be responsible for the safety of its workers and Contractor shall comply with applicable federal and state worker safety-related laws and regulations.

9.2 California Labor Code Compliance for Pre- and Post-Construction Related Work and Maintenance.

9.2.1 This section 9.2 applies if the Work includes either of the following:

9.2.1.1 Labor performed during the design, site assessment, feasibility study and pre-construction phases of construction, including, but not limited to, inspection

and land surveying work, and labor performed during the post-construction phases of construction, including, but not limited to, cleanup work at the jobsite. (See California Labor Code section 1720(a).) If the Work includes some labor as described in the preceding sentence and other labor that is not, then this section 9.2 applies only to workers performing the pre-construction and post-construction work.

9.2.1.2 "Maintenance" work, which means (i) routine, recurring and usual work for the preservation, protection and keeping of any District facility, plant, building, structure, utility system or other property ("District Facility") in a safe and continually usable condition, (ii) carpentry, electrical, plumbing, glazing, touchup painting, and other craft work designed to preserve any District Facility in a safe, efficient and continuously usable condition, including repairs, cleaning and other operations on District machinery and equipment, and (iii) landscape maintenance. "Maintenance" excludes (i) janitorial or custodial services of a routine, recurring or usual nature, and (ii) security, guard or other protection-related services. (See California Labor Code section 1771 and 8 California Code of Regulations section 16000.) If the Work includes some "maintenance" work and other work that is not "maintenance," then this section 9.2 applies only to workers performing the "maintenance" work.

9.2.2 Contractor shall comply with the California Labor Code provisions concerning payment of prevailing wage rates, penalties, employment of apprentices, hours of work and overtime, keeping and retention of payroll records, and other requirements applicable to public works as may be required by the Labor Code and applicable state regulations. (See California Labor Code division 2, part 7, chapter 1 (sections 1720-1861), which is incorporated in this Agreement by this reference.) The state-approved prevailing rates of per diem wages are available at <http://www.dir.ca.gov/opri/DPreWageDetermination.htm>. Contractor also shall comply with Labor Code sections 1775 and 1813, including provisions that require Contractor to (a) forfeit as a penalty to District up to \$200 for each calendar day or portion thereof for each worker (whether employed by Contractor or any subcontractor) paid less than the applicable prevailing wage rates for any labor done under this Agreement in violation of the Labor Code, (b) pay to each worker the difference between the prevailing wage rate and the amount paid to each worker for each calendar day or portion thereof for which the worker was paid less than the prevailing wage, and (c) forfeit as a penalty to District the sum of \$25 for each worker (whether employed by Contractor or any subcontractor) for each calendar day during which the worker is required or permitted to work more than 8 hours in any one day and 40 hours in any one calendar week in violation of Labor Code sections 1810 through 1815.

9.2.3 If the Work includes labor during pre- or post-construction phases as defined in section 9.2.1.1 above and the amount of the fee payable to Contractor under section 2 of this Agreement exceeds \$25,000, Contractor must be registered and qualified to perform public work with the Department of Industrial Relations pursuant section 1725.5 of the Labor Code.

Contractor's Public Works Contractor Registration Number: 1000004944

9.2.4 If the Work includes maintenance as defined in section 9.2.1.2 above and the amount of the fee payable to Contractor under section 2 of this Agreement exceeds \$15,000, Contractor must be registered and qualified to perform public work with the Department of Industrial Relations pursuant section 1725.5 of the Labor Code.

Contractor's Public Works Contractor Registration Number: 1000004944

d. [This paragraph may be replaced with "Intentionally omitted" if the Work is not subject to a grant or loan agreement] Contractor may perform some of the Work pursuant to funding provided to the District by various federal and/or state grant and/or loan agreement(s) that impose certain funding conditions on District and its sub-recipients (the "Funding Conditions"). For any such Work, if District informs Contractor about the Funding Conditions, then Contractor agrees to determine, comply with and be subject to the Funding Conditions that apply to District's Contractors and contractors performing the Work, including, but not limited to, provisions concerning record keeping, retention and inspection, audits, state or federal government's right to inspect Contractor's work, nondiscrimination, workers' compensation insurance, drug-free workplace certification, and, compliance with the Americans with Disabilities Act and related State laws.

10 Indemnification.

10.1 Contractor shall indemnify, defend, protect, and hold harmless District, and its officers, employees and agents ("Indemnitees") from and against any claims, liability, losses, damages and expenses (including attorney, expert witness and Contractor fees, and litigation costs) (collectively a "Claim") that arise out of, pertain to, or relate to the negligence, recklessness, or willful misconduct of Contractor or its employees, agents or subcontractors. The duty to indemnify, including the duty and the cost to defend, is limited as provided in this section. However, this indemnity provision will not apply to any Claim arising from the sole negligence or willful misconduct of District or its employees or agents. Contractor's obligations under this indemnification provision shall survive the termination of, or completion of Work under, this Agreement.

10.2 This section 10.2 applies if the Contractor is a "design professional" as that term is defined in Civil Code section 2782.8. If a court or arbitrator determines that the incident or occurrence that gave rise to the Claim was partially caused by the fault of an Indemnitee, then in no event shall Contractor's total costs incurred pursuant to its duty to defend Indemnitees exceed Contractor's proportionate percentage of fault as determined by a final judgment of a court or final decision of arbitrator.

11 Insurance

Types & Limits. Contractor at its sole cost and expense shall procure and maintain for the duration of this Agreement the following types and limits of insurance: [The general liability and automobile coverage limits may be adjusted depending on the Work's overall risks, cost and complexity.]

Type	Limits	Scope
Commercial general liability	\$2,000,000 per occurrence & \$4,000,000 aggregate	at least as broad as Insurance Services Office (ISO) Commercial General Liability Coverage (Occurrence Form CG 00 01) including products and completed operations, property damage, bodily

		injury, personal and advertising injury
Automobile liability	\$1,000,000 per accident	at least as broad as ISO Business Auto Coverage (Form CA 00 01)
Workers' compensation	Statutory limits	
Employers' liability	\$1,000,000 per accident	
Professional liability*	\$1,000,000 per claim	

*Required only if Contractor is a licensed engineer, land surveyor, geologist, architect, doctor, attorney or accountant.

11.1 Entitlement to Broader Coverage. If Contractor maintains broader coverage and/or higher limits than the minimums shown above, the District requires and shall be entitled to the broader coverage and/or higher limits maintained by Contractor. Any available insurance proceeds in excess of the specified minimum of insurance and coverage shall be available to the District. Furthermore, the above minimum insurance coverage limits can be met through provision of umbrella or excess policy insurance coverage consistent with the provisions of this section 11.

11.2 Other Requirements. The general and automobile liability policy(ies) shall be endorsed to name District, its officers, employees, volunteers and agents as additional insureds regarding liability arising out of the Work. Contractor's general and automobile coverage shall be primary and apply separately to each insurer against whom claim is made or suit is brought, except with respect to the limits of the insurer's liability. District's insurance or self-insurance, if any, shall be excess and shall not contribute with Contractor's insurance. Each insurance policy shall be endorsed to state that coverage shall not be canceled, except after 30 days (10 days for non-payment of premium) prior written notice to District. Insurance is to be placed with insurers authorized to do business in California with a current A.M. Best's rating of A:VII or better unless otherwise acceptable to District. Workers' compensation insurance issued by the State Compensation Insurance Fund is acceptable. Except for professional liability insurance, Contractor agrees to waive subrogation that any insurer may acquire from Contractor by virtue of the payment of any loss relating to the Work. Contractor agrees to obtain any endorsement that may be necessary to implement this subrogation waiver. The workers' compensation policy must be endorsed to contain a subrogation waiver in favor of District for the Work performed by Contractor.

11.3 Proof of Insurance. Upon request, Contractor shall provide to District the following proof of insurance: (a) certificate(s) of insurance evidencing this insurance; and (b) endorsement(s) on ISO Form CG 2010 (or insurer's equivalent), signed by a person authorized to bind coverage on behalf of the insurer(s), and certifying the additional insured coverage.

12 General Provisions

12.1 Entire Agreement; Amendment. The parties intend this writing to be the sole, final, complete, exclusive and integrated expression and statement of the terms of their contract concerning the Work. This Agreement supersedes all prior oral or written negotiations, representations, contracts or other documents that may be related to the Work,

except those other documents (if any) that are expressly referenced in this Agreement. This Agreement may be amended only by a subsequent written contract approved and signed by both parties.

12.2 Independent Contractor. Contractor's relationship to District is that of an independent contractor. All persons hired by Contractor and performing the Work shall be Contractor's employees or agents. Contractor and its officers, employees and agents are not District employees, and they are not entitled to District employment salary, wages or benefits. Contractor shall pay, and District shall not be responsible in any way for, the salary, wages, workers' compensation, unemployment insurance, disability insurance, tax withholding, and benefits to and on behalf of Contractor's employees. Contractor shall, to the fullest extent permitted by law, indemnify District, and its officers, employees, volunteers and agents from and against any and all liability, penalties, expenses and costs resulting from any adverse determination by the federal Internal Revenue Service, California Franchise Tax Board, other federal or state agency, or court concerning Contractor's independent contractor status or employment-related liability.

12.3 Subcontractors. No subcontract shall be awarded nor any subcontractor engaged by Contractor without District's prior written approval. Contractor shall be responsible for requiring and confirming that each approved subcontractor meets the minimum insurance requirements specified in section 11 of this Agreement. Any approved subcontractor shall obtain the required insurance coverages and provide proof of same to District in the manner provided in section 11 of this Agreement.

12.4 Assignment. This Agreement and all rights and obligations under it are personal to the parties. The Agreement may not be transferred, assigned, delegated or subcontracted in whole or in part, whether by assignment, subcontract, merger, operation of law or otherwise, by either party without the prior written consent of the other party. Any transfer, assignment, delegation, or subcontract in violation of this provision is null and void and grounds for the other party to terminate the Agreement.

12.5 No Waiver of Rights. Any waiver at any time by either party of its rights as to a breach or default of this Agreement shall not be deemed to be a waiver as to any other breach or default. No payment by District to Contractor shall be considered or construed to be an approval or acceptance of any Work or a waiver of any breach or default.

12.6 Severability. If any part of this Agreement is held to be void, invalid, illegal or unenforceable, then the remaining parts will continue in full force and effect and be fully binding, provided that each party still receives the benefits of this Agreement.

12.7 Governing Law and Venue. This Agreement will be governed by and construed in accordance with the laws of the State of California. The county and federal district court where District's office is located shall be venue for any state and federal court litigation concerning the enforcement or construction of this Agreement.

12.8 Notice. Any notice, demand, invoice or other communication required or permitted to be given under this Agreement must be in writing and delivered either (a) in person, (b) by prepaid, first class U.S. mail, (c) by a nationally-recognized commercial overnight courier service that guarantees next day delivery and provides a receipt, or (d) by email with confirmed receipt. Such notices, etc. shall be addressed as follows:

District:

Rancho Murieta Community Services District

Attn: _____

Rancho Murieta Community Services District, 15160 Jackson Road, Rancho Murieta,
CA 95683

E-mail: _____

Contractor:

Doug Veerkamp General Engineering, Inc.

Attn: Eric Wunschel

3701 Trade Way, Cameron Park, CA 95682

E-mail: eric.wunschel@dougveerkamp.com

Notice given as above will be deemed given (a) when delivered in person, (b) three days after deposited in prepaid, first class U.S. mail, (c) on the date of delivery as shown on the overnight courier service receipt, or (d) upon the sender's receipt of an email from the other party confirming the delivery of the notice, etc. Any party may change its contact information by notifying the other party of the change in the manner provided above.

12.9 Signatures and Authority. Each party warrants that the person signing this Agreement is authorized to act on behalf of the party for whom that person signs. This Agreement may be executed in two or more counterparts, each of which shall be deemed an original, but all of which together shall constitute the same instrument. Counterparts may be delivered by facsimile, electronic mail (including PDF or any electronic signature complying with California's Uniform Electronic Transactions Act (Cal. Civ. Code, §1633.1, et seq.) or any other applicable law) or other transmission method. The parties agree that any electronic signatures appearing on the Agreement are the same as handwritten signatures for the purposes of validity, enforceability, and admissibility.

Rancho Murieta Community Services District:

Dated: _____

By: _____

[Name]

[Title]

Doug Veerkamp General Engineering, Inc:

Dated: 5/14/2026

By: _____

Eric Wunschel, C.O.O.

EXHIBIT A

Doug Veerkamp General Engineering, Inc.
HYBRID HOURLY RATE TABLE

printed 5/14/2026

PREVAILING WAGE LABOR + PRIVATE EQUIPMENT RATES EXPIRE 6/30/26			
**LABOR **	Straight Time PREVAILING	Overtime PREVAILING	Double Time PREVAILING
Project Manager	\$200.00		
Superintendent	\$175.00	\$205.00	\$255.00
Foreman [Group 2]	\$149.00	\$198.00	\$246.00
Operator [Group 4]	\$145.00	\$191.00	\$238.00
Grade Setter [Group 4]	\$145.00	\$191.00	\$238.00
Carpenter	\$146.00	\$192.00	\$237.00
Concrete Finisher	\$119.00	\$156.00	\$192.00
Laborer [Group 1]	\$103.00	\$131.00	\$159.00
Flag Person [Group 3]	\$103.00	\$131.00	\$159.00
Driver On-haul/Off-haul	\$68.00	\$101.00	\$135.00
Driver Onsite [Group 3]	\$118.00	\$150.00	\$183.00
Driver Lowbed [Group 4]	\$118.00	\$151.00	\$184.00
Mechanic [Group 4]	\$145.00	\$191.00	\$238.00
PG&E Certified [Group 2]	\$149.00	\$198.00	\$246.00
EQUIPMENT Equipment mobilization additional when required	Column 1	Column 2	Column 3
BACKHOES One Operator Required - see rates above			
John Deere 310SL 4WD, 4-in-1 extendahoe, thumb & swinger	\$70.00		
John Deere 410L all 4WD, 4-in-1 extendahoe (12 Available)	\$75.00		
>>Attachment: Compaction Wheel	\$10.00		
>>Attachment: Auger & Bits	\$25.00		
>>Attachment: Hydraulic Breaker [Brk1]	\$75.00		
EXCAVATORS, Mini One Operator Required - see rates above			
CAT 303.5E Zero Tail Swing, QC, Thumb-12"/18"/24" Buckets (5 Available)	\$60.00		
>>Attachment: Auger (9" or 12" holes)	\$15.00		
>>Attachment: Hydraulic Breaker [Brk0]	\$30.00		
Cat 305 - 18", 24", 36" Buckets (2 Available)	\$75.00		
>>Attachment: Hydraulic Breaker [Brk0]	\$30.00		
EXCAVATORS, Medium One Operator Required - see rates above			
Takeuchi TB280 - 18", 24", 36" Buckets (2 Available)	\$90.00		
>>Attachment: Compaction Wheel	\$10.00		
Komatsu PC138 Zero Tail Swing-18",24",36" Buckets (5 Available)	\$120.00		
>>Attachment: Thumb or Compaction Wheel	\$10.00		
>>Attachment: PSM Rock Wall Grapple	\$15.00		
>>Attachment: Allied Hydraulic Breaker [Brk2]	\$80.00		
Takeuchi TB2150 - 18", 24", 36" Buckets	\$130.00		
Komatsu PC228/PC238 w/ 48" Bucket & Thumb (4 Available) <small>24" Trench bucket available</small>	\$150.00		
>>Attachment: Compaction Wheel	\$10.00		
>>Attachment: Grapple	\$25.00		
>>Attachment: Kent Hydraulic Breaker [Brk2]	\$80.00		

HYBRID HOURLY RATE TABLE

EQUIPMENT Equipment mobilization additional when required	Column 1	Column 2	Column 3
EXCAVATORS, Large One Operator Required - see rates above			
CAT 335FR w/ Bucket & Thumb (2 Available)	\$200.00		
>>Attachment: <i>Compaction Wheel</i>	\$10.00		
>>Attachment: <i>Hydraulic Breaker [Brk2]</i>	\$80.00		
Komatsu PC360-10 w/ Bucket & Thumb (4 Available)	\$200.00		
>>Attachment: <i>Compaction Wheel</i>	\$10.00		
>>Attachment: <i>Hydraulic Breaker or Shear [Brk2]</i>	\$80.00		
Komatsu PC490 w/ Bucket & Thumb (3 Available)	\$245.00		
>>Attachment: <i>Compaction Wheel</i>	\$10.00		
>>Attachment: <i>12,000 lb Hydraulic Breaker [Brk3]</i>	\$100.00		
Hitachi ZX870H w/2yd, 4.5yd, 6.6yd buckets & Ripper	\$340.00		
DOZERS One Operator Required - see rates above			
Komatsu D51 6Way Blade & Rippers	\$130.00		
>>Attachment: <i>Laser</i>	\$15.00		
>>Attachment: <i>GPS</i>	\$30.00		
Komatsu D61 6 Way Blade, Rippers, Intelligent Control (3 Available)	\$170.00		
CAT D6T 6 Way Blade & Rippers	\$195.00		
>>Attachment: <i>Laser</i>	\$15.00		
>>Attachment: <i>GPS</i>	\$30.00		
CAT D8T S.U. Blade & Rippers	\$270.00		
>>Attachment: <i>Laser</i>	\$15.00		
>>Attachment: <i>GPS</i>	\$30.00		
CAT D9T St. Blade & Rippers	\$330.00		
>>Attachment: <i>Laser</i>	\$15.00		
>>Attachment: <i>GPS</i>	\$30.00		
ROAD GRADERS/GRADING TRACTORS One Operator Required - see rates above			
John Deere 210LE 4X4 4-in-1 Box Scraper (4 Available)	\$70.00		
Takeuchi TL12V Highflow Tracked Skidsteer , 4-in-1 Bucket (4 Available)	\$80.00		
>>Attachment: <i>Auger (9" or 12" holes)</i>	\$15.00		
>>Attachment: <i>Lowe XR215 Trencher</i>	\$25.00		
>>Attachment: <i>Caterpillar SG36 Stump Grinder</i>	\$25.00		
>>Attachment: <i>Hydraulic Breaker [Brk0]</i>	\$30.00		
>>Attachment: <i>Caterpillar 24" Asphalt Planer Attachment</i>	\$65.00		
>>Attachment: <i>Road Widener FH-R1</i>	\$55.00		
>>Attachment: <i>Erskine Wood Chipper</i>	\$65.00		
NorAm 65E Grader	\$85.00		
CAT 160M -16' Blade & Ripper, All Wheel Drive	\$175.00		
>>Attachment: <i>Laser</i>	\$15.00		
>>Attachment: <i>GPS</i>	\$30.00		
CAT 14M- 16' Blade & Ripper	\$200.00		
>>Attachment: <i>Laser</i>	\$15.00		
SCRAPERS One Operator Required - see rates above			
CAT 615C II Paddlewheel 15yd	\$160.00		
CAT 631 27yd. Open Bowl (2 Available)	\$245.00		

HYBRID HOURLY RATE TABLE

EQUIPMENT Equipment mobilization additional when required	Column 1	Column 2	Column 3
LOADERS	One Operator Required - see rates above		
Komatsu WA270-7 Wheel Loader 3 yd, Side Dump (5 Available)	\$120.00		
Komatsu WA320-7 Wheel Loader 3.5 yd & Forks (3 Available)	\$125.00		
Komatsu WA380-8 Wheel Loader 4 yd G.P. Bucket, 3rd Valve (1 Available)	\$135.00		
LOG SKIDDER	One Operator Required - see rates above		
Log Skidder CAT 518 Winch & Grapple	\$95.00		
SCREEN			
Manual Grizzly Screens (bare) (\$500/wk - \$1500/mo) (2 Available)	\$10.00		
POWER BROOMS	See Labor requirements per equipment		
Laymor - Self-propelled 8ft. Power Broom (5 Available)	\$65.00	One Laborer required - see rates above	
XBroom on Freightliner Street Sweeper	\$125.00	One Operator required - see rates above	
COMPACTION, Towed Type			
>>Sheepsfoot 4x4 Double Drum Attachment (4 Available)	\$35.00		
COMPACTORS, Self-Propelled	One Operator Required - see rates above		
CAT 815B/815F Tilt Blade (2 Available)	\$180.00		
CAT 825C/825H Tilt Blade (2 Available)	\$250.00		
>>Attachment: GPS	\$30.00		
ROLLERS, Smooth Drum	One Operator Required - see rates above		
Dynapac CC12001300 47" Dual Drum Vib. Asphalt Roller	\$65.00		
CAT CB-22B 39" Dual Drum Vibratory Asphalt Roller	\$65.00		
Bomag BW141 59" Double Drum Roller	\$85.00		
Bomag BW161 66" Double Drum Roller	\$100.00		
Volvo DD-90 66" Dual Drum Vibratory Asphalt Roller	\$100.00		
Volvo DD-110 66" Dual Drum Vibratory Asphalt Roller	\$105.00		
Volvo SD 115B Smooth Drum w/84" Pad Drum with Blade (4 Available)	\$105.00		
ROLLERS, Rubber Tire/Pneumatic	One Operator Required - see rates above		
Bomag BW11 RH (2 available)	\$95.00		
ASPHALT PAVERS	See Labor requirements per equipment		
Asphalt Power Curb Machine	\$35.00	One Laborer required - see rates above	
Seal Coat Machine	\$75.00	One Laborer required - see rates above	
Hot Crackfill Machine (Towable/requires pickup)	\$90.00	Three Laborers required - see rates above	
Blaw-Knox PF-545 Path Paver [#8]	\$230.00	Two Operators required - see rates above	
Carlson CP85 [#9,#12] or Bomag 814-2 [#11] (2 Available)	\$230.00	Two Operators required - see rates above	
Cat 1055F Paver [#10]	\$340.00	Two Operators required - see rates above	

HYBRID HOURLY RATE TABLE

EQUIPMENT	Equipment mobilization additional when required	Column 1	Column 2	Column 3
CHIP SPREADER - Self Propelled		Two Operators Required - see rates above		
Rosco - 12' adjustable head		\$205.00		
WATER TOWERS				
Water Tower Model 10 or Interpipe 10,000 Gal. (Water extra) (2 Available)		\$10.00		
Water Tower Klein KPT120 12,000 Gal (Water extra) (4 Available)		\$12.00		
WATER TRUCKS				
Water Trailer-Towed Type - 500 Gal. Capacity (Water extra @\$5 per load) (4 Available)		\$20.00	Requires pickup and Laborer	
Water Truck 2000 Gal. Self Load - 2 axle (Water extra @ \$20 per 2k load) (3 Available)		\$80.00	One Driver required - see rates above	
Water Truck 3800-4000 Gal. Self Load - 3 axle (Water extra @\$35 per ~4k load) (7 Avail)		\$90.00	One Driver required - see rates above	
Water Truck Volvo A40F 7500g Off Road Articulated (Water extra) (2 Available)		\$200.00	One Operator required-see rates above	
HEAVY TRUCKS		One Driver Required -see rates above		
ADD \$5/hr for Projects East of Bass Lake Road				
Dump Truck - 6 Wheel		\$75.00		
Dump Truck - 10 Wheel, Rock Beds, 10yd. Capacity (2 Available)		\$80.00		
Dump Truck - Super Dump, 14 yd. Capacity (10 Available)		\$90.00		
Transfer Dump Truck w/Transfer Trailer (10 Available)		\$95.00		
Semi End Dump (lowside) 20yd Capacity (4 Available)		\$95.00		
Highside Semi End Dump w/ 32'-40yd or 36'-55yd (2 Available)		\$105.00		
Highside Semi End Dump w/ 40'-87yd (2 Available)		\$115.00		
OFF ROAD TRUCKS		One Operator Required - see rates above		
Volvo A-40F & A40G 40 ton capacity (6 Available)		\$195.00		
Volvo A-45G 45 ton capacity (2 Available)		\$205.00		
EQUIPMENT TRANSPORTS - All required trip permits extra		One Driver Required -see rates above		
Pilot Car w/signage & lights		\$40.00		
Hoe Hauler (12t capacity) or Roll Back Truck (2 Available)		\$90.00		
3Ax Tractor w/8W Lobed Trailer 38 Ton Capacity (2 Available)		\$105.00		
3Ax Tractor w/16W Lobed Trailer, Legal Loads (2 Available)		\$125.00		
3Ax Tractor w/16W Lobed, with/10'wide trailer (2 Available)		\$135.00		
3Ax Tractor w/16W Lobed & 7Ax Jeep or Scraper Basket		\$190.00		
UTILITY TRUCKS				
3/4 Ton Pickup Trucks <i>includes F150, F250 & F350</i>		\$30.00		
1 Ton Trucks & Superdutys <i>includes F450 & F550</i>		\$40.00		
PAT-1 24' Flatbed 2 Axle Truck		\$75.00		
PAT-1 24' Flatbed 2 Axle Truck with Attenuator		\$95.00		
TRAILERS				
Utility 1 Axle Trailer		\$5.00		
Utility 2 Axle Trailer		\$10.00		
Equipment Trailer		\$20.00		

HYBRID HOURLY RATE TABLE

EQUIPMENT	Equipment mobilization additional when required	Column 1	Column 2	Column 3
ASPHALT CONCRETE SAWS				
Saw, Asphalt Concrete Handheld w/Diamond Blade		\$20.00		
Saw, Asphalt Concrete Husqvarna 4400-D/Merit 44HP (Large - requires pickup)		\$60.00		
Saw, Asphalt Concrete Wet 14" Walk Behind		\$50.00		
ASPHALT CONCRETE GRINDER		One Operator Required - see rates above		
Wirtgen W120Fi 48" Asphalt Grinder (Minimum Daily Rate)		\$2,720.00		
TRENCHERS		See Labor requirements per equipment		
Trencher - Ditch Witch Walk Behind		\$20.00	One Laborer required - see rates above	
Vacuum Fluid Excavator - Vacuum Truck 2100 PD		\$285.00	One Operator required - see rates above	
TELEHANDLER/FORKLIFT		One Driver Required - see rates above		
Telehandler All Terrain - Gehl RS5		\$70.00		
Telehandler All Terrain - CAT TL1055		\$90.00		
TOOLS/COMPRESSORS/NON-OP EQUIPMENT				
Air Compressor - Ingersoll Rand, Doosan (bare w/tools) (4 Available)		\$30.00		
Bituminous Oil Pot, 200gal (Material extra) (3 Available)		\$20.00		
Bituminous Oil Pot, 600gal w/Spray Bar (Material extra)		\$25.00		
Concrete Mixer		\$20.00		
Generator-Multiquip 25KW Portable (2 Available)		\$25.00		
Generator-Magnum 56KW Portable (1 Available)		\$35.00		
Generator-Small Portable		\$20.00		
High Pressure Washer - Apache 3000PSI		\$15.00		
Light Towers (trailer mounted) 4 Magnum & 4 Allmand diesel 4 lights		\$20.00		
Pump - Flygt 4" Sump - generator additional (3 Available)		\$15.00		
Pump - 3" Sump or smaller -generator additional		\$10.00		
Saws, Chain/Ring/Cut Off		\$20.00		
Sewer Camera		\$20.00		
Slurry Tanker, 800gal (Material extra)		\$25.00		
Wacker, Stomper Compactor		\$20.00		
Wacker, Vibratory Plate Heavy -Turtles		\$25.00		
Winch, WARN for Excavator Attachment		\$15.00		

EQUIPMENT Equipment mobilization additional when required	Column1	Column2	Column3
GPS			
GPS Base & Pole Equipment	\$15.00		
GPS Base & ATV/Pole Equipment	\$25.00		
GPS Base & Equipment Mount (GPS Equipment only)	\$30.00		
TRAFFIC CONTROL			
F550 Cone Truck & Cones (2 Available)	\$85.00	One Laborer required - see rates above	
Arrow Board - Daily Rate (8 hours) (4 Available)	\$125.00		
Arrow Board - Weekly Rate (40 hours)	\$400.00		
Arrow Board - Monthly Rate (160 hours)	\$925.00		
Message Board - Daily Rate (8 hours) (10 Available)	\$165.00		
Message Board - Weekly Rate (40 hours)	\$400.00		
Message Board - Monthly Rate (160 Hours)	\$1,250.00		
AFAD - Automatic Flagger (8 hours per each unit) (2 Available)	\$200.00		



Rockwell Automation Contract Renewal

To renew support for another year, please review this quote and instructions below.

If no changes are required, please follow the purchase order instructions outlined in Section 2.3.

If changes are required before purchase, please contact your local Rockwell Automation Distributor.

Rockwell Automation Services Agreement - Renewal

FIXED PRICE PROPOSAL

3801063919

Rancho Murieta Community Servis District
Rancho Murieta, CA

Date of Issue: Tuesday, March 24, 2026
Quotation #: 376576 (RA Approval - QXSK10533A)

Presented to:
Rancho Murieta Community Servis District
15160 Jackson Road
Rancho Murieta, Ca 95683
United States

Proposed by:
Rexel USA, Inc.
1534 N Market BLVD
SACRAMENTO, CA 95834
United States

*Rockwell Automation
Unknown
Unknown
Unknown, Unknown Unknown
United States*

expanding **human** possibility®

Contents

1 ROCKWELL AUTOMATION STATEMENT OF WORK FOR SERVICES.....4

1.1 TechConnectSM Support Agreement..... 4

1.1.1 Agreement Term..... 4

1.1.2 TechConnectSM Support Levels 4

1.1.3 Product Coverage Details 4

1.1.4 TechConnectSM Support Information 5

1.1.4.1 TechConnectSM Support Options..... 5

1.1.4.2 Definitions of Common Terms Used in Services 7

1.1.4.3 Product Families 7

1.1.5 Learning+ Subscription (Optional)..... 8

1.1.5.1 Solution Description 8

1.1.6 Changes to Agreement..... 8

1.1.6.1 Updates to Supported Software Installed Base 8

1.1.6.2 Upgrade Options..... 8

1.1.6.3 Changes to Scope 8

1.1.6.4 Reinstatement Policy 8

1.1.7 Product Coverage Exclusions 9

1.2 Customer Responsibilities..... 9

1.2.1 Maintenance, Electrical, and Operations Staff 9

1.2.2 System Maintenance and Use 9

1.2.3 Access to the System 10

1.3 Assumptions, Clarifications and Exceptions 10

1.4 TechConnectSM - Termination for Convenience..... 12

1.5 Rockwell Automation Commitment for Sales Through Distribution..... 12

2 DISTRIBUTOR COMMERCIAL TERMS.....13

2.1 Pricing Summary 13

2.2 Invoicing Schedule 13

2.3 Purchase Order Instructions 14

2.4 Distributor Terms and Conditions of Sale 14

The information contained in this document consists of technical, commercial and/or financial information, which is confidential and proprietary to Rockwell Automation, Inc. This information is furnished in confidence and with the understanding that it may not be disclosed to third parties or reproduced or used, in whole or in part, for any purpose other than evaluation of this document.

1 Rockwell Automation Statement of Work for Services

This proposal is offered to Rexel USA, Inc. for resale to Rancho Murieta Community Serv District (“Customer”).

1.1 TechConnectSM Support Agreement

This TechConnectSM Support Agreement (“Agreement”) allows plants to be connected to Rockwell Automation’s world-class phone and electronic technical support.

Rockwell Automation’s technical support team will provide assistance with installing, configuring and maintaining equipment and software, obtaining current software updates, diagnosing and fixing operating problems, or performing basic programming tasks.

1.1.1 Agreement Term

Agreement Coverage Period: Thursday, July 16, 2026 to Thursday, July 15, 2027

1.1.2 TechConnectSM Support Levels

Product Family	Description	Support Level	Service Level
9800-DC8AUTOA	Automation Control Hardware	Product Support	8 x 5 M-F
9800-DC8HMICOM	HMI Software	Product Support	8 x 5 M-F
9800-DC8INFAUT	Information Automation Software	Product Support	8 x 5 M-F

Table 1: TechConnectSM Support Levels

1.1.3 Product Coverage Details

Rockwell Automation will provide TechConnectSM Support coverage to Customer for the Rockwell Automation Product Families & software serial numbers listed below. Please ensure the following information is complete and includes any new “Software Maintenance” products you wish to add to this support agreement.

Hardware Type
Automation Control Hardware

Product Family & Software Serial Numbers	Description	Install Count
9800-DC8HMICOM	HMI Software	
9701-VWSCWAENE		1

The information contained in this document consists of technical, commercial and/or financial information, which is confidential and proprietary to Rockwell Automation, Inc. This information is furnished in confidence and with the understanding that it may not be disclosed to third parties or reproduced or used, in whole or in part, for any purpose other than evaluation of this document.

Product Family & Software Serial Numbers	Description	Install Count
2524123225	FT View Client Site Edition ESD S/W	1
9701-VWSCWAENW		2
2524095926	FT View Client Site Edition ESD S/W	1
2524095927	FT View Client Site Edition ESD S/W	1
9701-VWSS100AENW		1
2527025728	FT View Server SE 100D License ESD S/W	1
9701-VWSS250AENE		2
2528016241	FT View Server SE 250 Display Lic sfw	1
2528016242	FT View Server SE 250 Display Lic sfw	1
9701-VWSTENW		1
2529047546	FT View Studio SE FT View Ent EN ESD S/W	1
9800-DC8INFAUT	Information Automation Software	
9518-HSE500W		1
3318005960	FT Historian SE - 500 tags ESD Software	1
9521-VPCL01ENW		1
3127005794	FT VantagePoint Client 1 CCU ESD S/W	1

Note: If changes to the TechConnectSM Support Product Coverage Details above are required, please contact your local Rockwell Automation sales office or Allen-Bradley® authorized distributor to request an updated proposal.

1.1.4 TechConnectSM Support Information

1.1.4.1 TechConnectSM Support Options

Rockwell Automation offers progressive levels of support to meet your business needs; see table below for all available support level options. Please refer to *Table 1: TechConnectSM Support Levels* regarding support levels included in this Statement of Work.

Support Level	Support Services Description
Application Support	<p>You are partnered with a team of technical support engineers who are uniquely designated to support your key applications. This team visits your site, becomes familiar with the applications, and gathers system drawings and documentation. This team will become an extension of your support staff, providing technical account management and scheduled consulting time.</p> <p>Application Support includes the support elements of Product Support, System Support and the following support elements:</p> <p>Real-time, Application-Level Support <i>Designated support team / Dedicated telephone and email / Documentation and case familiarization / Application knowledge management / Periodic performance reviews</i></p> <p>Surveillance and Alarming Options <i>Device and/or process monitoring and alarming at Rockwell Automation facility or remotely / Access to historical data for troubleshooting</i></p> <p>Application-Level Administration Option</p>

Support Level	Support Services Description
	<p><i>Emergency backup / Performance tuning / Guaranteed field service call-out</i></p>
System Support	<p>System Support allows your calls to be routed to a group of technical support engineers with proven expertise in Rockwell Automation control systems. You will work with an engineer who manages your case through resolution and follow-up.</p> <p>System Support includes the support elements of Product Support, and the following support elements:</p> <p>Real-time, System-Level Support <i>Standard product and programming software / Advanced software / Proactive follow up / Single-point resolution</i></p> <p>Advanced Engineering Expertise <i>Get support from system-level support engineers that have multiple years of experience in the industrial automation industry</i></p>
Product Support	<p>As often as Customer needs require, you can contact Rockwell Automation technical support engineers for real-time phone support. Our engineers have deep knowledge of our products, software and legacy hardware and can use remote desktop technology to help troubleshoot or assist in the configuration of products quickly.</p> <p>Product Support includes the support elements of Self-Assist Support, and the following support elements:</p> <p>Real-Time, Product-Level Support <i>Standard product and programming software / Telephone and live chat support available in 20 languages / Remote desktop troubleshooting</i></p> <p>Learning+ Subscription Available for Purchase <i>Highly interactive learning featuring lessons, software simulations, and demonstration videos to help reinforce learning concepts. Available on any tablet or PC using Chrome, Safari, IE, Edge or Firefox. Each course has a knowledge assessment, requiring 80% to pass. Upon successful completion of the course, a learner will be awarded CEUs (where applicable).</i></p> <p>Live View <i>An enhanced support experience connecting you with a Rockwell Automation Technical Support expert leveraging a live video feed, content sharing, and annotations in real time.</i></p> <p>Software Maintenance II</p>

Support Level	Support Services Description
	<i>Software update media / Emergency software replacement</i>
Self-Assist Support	<p>Take advantage of the Knowledgebase, an online resource for technical information, support, and assistance. The Knowledgebase can assist in increasing productivity by finding solutions to technical questions more quickly - saving both time and money. The KnowledgeBase is maintained by the same engineers who provide TechConnectSM Support and is updated with the hardware and software solutions from actual support cases. These updates are incorporated dynamically. Self-Assist includes the following support elements:</p> <p>Welcome Kit <i>Essential support agreement information / Support authorization number / Local support telephone number / User guide</i></p> <p>Digital Assist Library <i>Cloud-hosted augmented reality library of work instructions. Leverage augmented reality to walk through the proper steps to complete tasks related to the repair and maintenance of Allen-Bradley hardware</i></p> <p>Software Maintenance I <i>Software update downloads</i></p> <p>Online Support Centre Access <i>Knowledgebase tech notes / Interactive forums / Product notifications / Manage service tickets / Submit questions via email</i></p>

1.1.4.2 Definitions of Common Terms Used in Services

Technical Phone Support: Rockwell Automation phone support provides technical assistance for installation, configuration, troubleshooting, diagnosis, basic instruction programming and best practice recommendations. With an unlimited phone support agreement, Customer can call as often as needed throughout the term of your Agreement. Standard hours of coverage are 8:00 AM to 5:00 PM Monday – Friday (based on your local calling time; Rockwell Automation observed holidays excluded). Information on Rockwell Automation observed holidays can be found via the Knowledgebase in article #QA33258 (https://rockwellautomation.custhelp.com/app/answers/answer_view/a_id/819086/redirect).

Case Handling: Rockwell Automation handles cases that require further investigation as a priority with automatic escalation procedures, and call Customer back to provide a progress update if an answer is not immediately available.

Case Resolution Follow-up: For cases where Rockwell Automation could not confirm resolution on the initial call, Customer will receive a proactive follow-up within one business day (target response) to confirm that the problem was resolved or continue troubleshooting, if necessary.

1.1.4.3 Product Families

Rockwell Automation groups products into product families, making it simpler to deliver integrated support for hardware and software, including older and discontinued products. The lists available at the following link are not comprehensive; however, they illustrate how products are classified.

[TechConnect Support Product Family Coverage | Rockwell Automation | US](https://www.rockwellautomation.com/en-us/capabilities/industrial-maintenance-support/product-application-support/remote-support/product-family-coverage.html)

<https://www.rockwellautomation.com/en-us/capabilities/industrial-maintenance-support/product-application-support/remote-support/product-family-coverage.html>

1.1.5 Learning+ Subscription (Optional)

1.1.5.1 Solution Description

Rockwell Automation offers Learning+, an online training platform accessible on any internet enabled device. Options offered for sale include either short term access to a single automation course or an annual subscription. An annual Learning+ subscription provides modular, self-paced lessons, on-demand webinars, and unlimited access to scheduled Virtual Instructor Led Training Courses.

1.1.6 Changes to Agreement

1.1.6.1 Updates to Supported Software Installed Base

Support included with new Licenses purchased during the agreement term are not covered by this scope of work. Each new software purchase includes an independent support contract which may be co-termed with your TechConnect anniversary date. Renewal of these purchases will occur in the Rockwell Automation commerce portal as a separate agreement.

Please work with your Rockwell Automation Customer Success Manager during each TechConnect renewal to consolidate and extend existing contracts to your next TechConnect renewal date.

1.1.6.2 Upgrade Options

Updates to existing TechConnectSM Support Agreement and/or upgrades must be custom quoted by Rockwell Automation. Customer has the following upgrade options:

Coverage Level: Product and System Support agreements can be upgraded to 24x7x365 coverage (e.g., 8:00AM – 5:00PM to 24x7x365), which provides the option to call at any time, including weekends and holidays.

Support Level: Customer may upgrade support levels (e.g., Product Support to System Support) during the term of an existing agreement.

1.1.6.3 Changes to Scope

Contact your local Rockwell Automation sales representative if any adjustments are required during Agreement term, such as:

- Adding or removing a site from support
- Moving supported equipment and software to another supported facility
- Closing a plant and selling to another entity

1.1.6.4 Reinstatement Policy

If Customer does not renew their contract until after the expiration date of the contract, the Customer has the following options to reinstate their support:

- a. If an agreement is not renewed on time and it has been less than 12 months since expiration, the renewed agreement will be backdated to the original expected start date and a 10% fee¹ will be added to the cost of the renewal.
- b. If an agreement is not renewed on time and it has been longer than 12 months since expiration, the support agreement will be priced as a new agreement with current price levels and any previous discounts will not be applied.
- c. For software packages that are removed from support and later reinstated, often referred to as “frozen” and “unfrozen,” a 30% premium will be applied to each piece of software which carries a fee for maintenance as part of the TechConnectSM program.

Note: There is a grace period of 10 days after the date of the Agreement expiration during which Customer can still access support. If Customer renews after the expiration date of the Agreement, the policy above applies regardless of this grace period.

1.1.7 Product Coverage Exclusions

Rockwell Automation products excluded from TechConnectSM Support coverage under this Agreement (if applicable) are listed below:

1.2 Customer Responsibilities

1.2.1 Maintenance, Electrical, and Operations Staff

When applicable, Customer will provide dedicated and available appropriate personnel knowledgeable in the process, operation, control system, and facility layout to assist Rockwell Automation personnel during onsite visits. They will remain onsite and available as necessary for project and/or safety reasons.

1.2.2 System Maintenance and Use

Customer is responsible for (i) the overall performance and overall design of the machine or manufacturing system, including safety features failure modes; (ii) properly using, calibrating, operating, monitoring and maintaining the products and system consistent with all Rockwell Automation or third-party provided instructions, warnings, recommendations, and product and system documentation; (iii) ensuring that properly trained personnel use, operate and maintain the products and system at all times; (iv) staying informed of product updates and alerts and implementing all updates and fixes; (v) notifying Rockwell Automation of any problems with the products or system; and (vi) all other factors affecting the products or system that are outside of the direct control of Rockwell Automation.

¹ If Customer’s TechConnectSM Support Agreement has never included support for the product family in question, then the commercial “waive reinstatement” program applies for the respective packages.

1.2.3 Access to the System

Customer will make the applicable processes and/or systems available to Rockwell Automation personnel during the mutually agreed upon schedule for services and equipment implementation as described in this Statement of Work.

1.3 Assumptions, Clarifications and Exceptions

The following assumptions, clarifications and exceptions have been made by Rockwell Automation in the development of this Statement of Work:

Reference	Assumptions (A), Clarifications (C) and Exceptions (E)
A1	Safety. All aspects of mechanical, electrical, and process safety are responsibilities of Customer.
A2	Installation. If applicable, all mechanical and electrical installation is to be provided and managed by Customer and their selected Contractor.
C1	Quotation Scope. Any elements not explicitly outlined within this Statement of Work are not included in the deliverables for this Rockwell Automation Services Agreement.
C2	Documentation. All project and system documentation will be in English and furnished in electronic format unless otherwise stated. Translation into other languages is not included in this Statement of Work.
C3	RoHS. Customer supplied/specified products will meet all applicable material restrictions as defined in RoHS. If it does not, Customer will notify Rockwell Automation prior to shipment of Customer supplied/specified products to Rockwell Automation. Customer will indemnify Rockwell Automation against any claim arising out of Rockwell Automation's use of Customer supplied/specified products.
C4	Existing Devices. Customer represents that any existing operator, machine-mounted, or field devices that are in use or are to be reused are in good working order and will be repaired or replaced by Customer when required. Repair and/or replacement of damaged devices is not included in Rockwell Automation's Statement of Work.
C5	Documented Change Request (DCR) Process. Changes to this scope of work requested by Customer throughout the duration of the Support Agreement will be identified and communicated through project management at Rockwell Automation. Estimates for the material costs, labor, and schedule impacts will be prepared when a change in scope is identified. Refer to the Rockwell Automation Changes provision for additional terms.
C6	Customer Specific Requirements. This proposal does not include Customer specific requirements or onsite activities such as Customer or site specific safety training, background checks, health-related testing or vaccinations, international work visas, and copies of expense receipts. Rockwell Automation must be made aware of any such requirements prior to contract award. Costs for associated time and expenses incurred while complying with such requirements will be at Customer expense.
C7	Infectious Disease Planning. Rockwell Automation is committed to health, safety, and doing all we can to maintain a high level of service for our customers. We are committed to communicating with you about the impact that an infectious disease and any related governmental restrictions may have on the deployment of our personnel and delivery of the project and truly appreciate your cooperation and understanding. In submitting any purchase order, you acknowledge and agree that Rockwell Automation will be excused from performance, or delay in performance, of its obligations under this purchase order, regardless of whether a contract is currently in place governing the parties' relationship, to the extent that Rockwell Automation is unable to perform such obligations due to the effects of a known infectious disease affecting Rockwell Automation and/or third parties, including, without limitation, logistics and materials suppliers.

C8	On-site Working Hours. Rockwell Automation Standard working hours may differ by country. Contact your local Rockwell Automation Distributor or Sales Office to obtain current local standard working hours.
C9	Stand-by time is defined as time spent on-site waiting for completion of customer activities. This includes, but is not limited to, waiting for correction of construction, installation, and wiring or piping errors, and other delays beyond the control of, or not within, Rockwell Automation's specific responsibilities. Stand by time will be invoiced separately at applicable time and expense rates.
C10	Work Site Safety. Customer is responsible for assuring a safe and secure work environment, compliant with relevant local, state, provincial, and nationally recognized standards and regulations, for work at the site.
C11	Safety and Substance Abuse. Rockwell Automation will comply with its own Substance Abuse Policy which meets the intent of the DRUG FREE WORKPLACE Act and all other legal requirements regarding drug testing. A copy of this policy can be supplied upon request.
C12	Ethics and Compliance. All of Rockwell Automation's employees and every person who performs work for, or on behalf of Rockwell Automation are treated with respect and dignity. Rockwell Automation has a no-tolerance policy for discrimination, harassment, and zero tolerance for workplace violence and weapons. Please see the PartnerNetwork Code of Conduct and the Rockwell Automation Global Policy People for further details. https://www.rockwellautomation.com/en-us/company/about-us/sustainability/ethics-compliance.html .
C13	Third Party Software. This Statement of Work may include third party software that is subject to third party license terms ("Third Party Software"). Customer's right to use such Third Party Software as part of or in connection with the Work is subject to any applicable acknowledgements and license terms accompanying such Third Party Software contained therein. If there is a conflict between the licensing terms of such Third Party Software and this Statement of Work, the licensing terms of the Third Party Software shall prevail in connection with the related Third Party Software.
C14	<p>Information Security Standards In the performance of all Work pursuant to this Agreement and Statement of Work, Customer and Rockwell Automation will comply with the following standards and practices:</p> <p>Data Transmission Customer agrees that all transmission or exchange of sensitive data with Rockwell Automation shall take place using secure, industry acceptable, standards (e.g., password-protected, using a complex password; encrypted WinZip sent via e-mail, or, for large files, an encrypted file transfer service; physical media such as paper/DVD sent securely; or another equally secure means of transport). If Customer requires Rockwell Automation to use Customer specified system, the security of the data in transit and at rest once sent from Rockwell Automation is Customer's sole responsibility.</p> <p>Customer-Provided Hard Disk If Rockwell Automation personnel are required to use Customer provided hard disks, Customer agrees to provide the hard disk with designated backup and recovery processes and in encrypted form, using commercially supported or industry standard open-source encryption solutions. The Customer must use commercially reasonable efforts to prevent the Customer-provided hard disk from introducing any malicious software into Rockwell Automation's systems. These efforts shall include, but are not limited to, the use of anti-virus and/or anti-malware and the regular deployment of security patches to remediate any vulnerabilities.</p> <p>Remote Access Remote access by Rockwell Automation's personnel into Customer's control system(s) must be accomplished in accordance with either Customer or Rockwell Automation procedures, whichever is more stringent. If Customer requires Rockwell Automation personnel to use Customer-specified procedures, the security of the connection/session is Customer's sole responsibility, and Customer is solely responsible for logging activities of all users accessing the Customer's system.</p>

C15	Cybersecurity for Solutions. Sub-contractors and/or third-party vendors will follow any applicable industry best practices and/or guidelines for cybersecurity and data protection with regard to IEC 62443 2-4.
C16	Personal Data. To the extent Rockwell Automation processes personal data in the performance of the services under this Statement of Work, such processing of personal data will be conducted in accordance with the Data Processing Addendum ("DPA") available at https://www.rockwellautomation.com/en-us/company/about-us/legal-notices/data-processing-addendum.html .
C17	Customer Information. Rockwell Automation will share with its authorized distributor or partner of record Customer Data collected under this Agreement pursuant to the terms herein and the Rockwell Automation Privacy and Cookies Policy located at https://www.rockwellautomation.com/en-us/company/about-us/legal-notices/privacy-and-cookies-policy.html .
C18	Customer Success Publication. Sharing customer success stories helps position customers as leaders among companies pursuing excellence in their industrial operations. Customer agrees that Rockwell Automation can reference and disclose Customer's name and logo in internal and external marketing materials and will share only the solutions and services purchased, Customer industry, location, and general results through a customer success story. Rockwell Automation will make no claims that Customer endorses the product or solution, and the success story will be used for marketing purposes only.

1.4 TechConnectSM - Termination for Convenience

Either party may terminate this Agreement with a prior written 30-day notice. In the event Customer cancels, Customer would be subject to a termination fee equal to 25% of the remaining Agreement value. Termination request is invalid if remaining term of service is less than 2 months.

1.5 Rockwell Automation Commitment for Sales Through Distribution

The Rockwell Automation Commitment for Sales Through Distribution (the "Commitment Terms") found at <https://www.rockwellautomation.com/en-us/company/about-us/legal-notices/commitment-for-sales-through-distribution.html> covers purchases by Distributor's customer ("Customer") from Distributor of the Products and Services described and integrated pursuant to this Statement of Work to be provided by Rockwell Automation, Inc. and/or its affiliates. The Commitment Terms apply directly to Customer and Rockwell Automation.

Accepted.

Customer: _____

Date: _____

2 Distributor Commercial Terms

2.1 Pricing Summary

Rexel USA, Inc.'s price is based on the Statement of Work set forth in Section 1 above. All prices are in USD.

Item	Product	Price
1	9800-DC8AUTOA <i>Automation Control Hardware, Product Support, 8 x 5 M-F, 1-4 Total Devices</i>	1,106.75
2	9800-DC8HMICOM <i>HMI Software, Product Support, 8 x 5 M-F</i>	7,974.97
3	9800-DC8INFAUT <i>Information Automation Software, Product Support, 8 x 5 M-F</i>	3,169.67

TOTAL PRICE: **USD 12,251.39**

Contract Reinstatement Fee: USD 1,225.14

If this contract is not renewed before the current Contract Expiration Date Thursday, July 15, 2027, a 10% Contract Reinstatement Fee will be applied to the Suggested Resale Price.

Multi-Year Option - Fixed Price 3-Year Contract

One-Time Payment or Billed Annually - Single PO for 3-Year Amount Required **\$36,754.17**

LEARNING+ SUBSCRIPTION (OPTIONAL): Web hosted, self-paced training courses including virtual classroom sessions are available for customers with an active TechConnect support agreement, as either single course access or annual subscription to all course content available in the Rockwell Automation Digital Learning Library. Please add the net amount for the Learning+ option desired in the correct quantity of desired users to your renewal PO.

Catalog Number	Description	List Price per User
LP-3TC	Learning+ 1 Class available for 3 months	USD 820.00
LP-SU1	Learning+ Single User Subscription	USD 4,940.00

2.2 Invoicing Schedule

Contract Start Date

2.3 Purchase Order Instructions

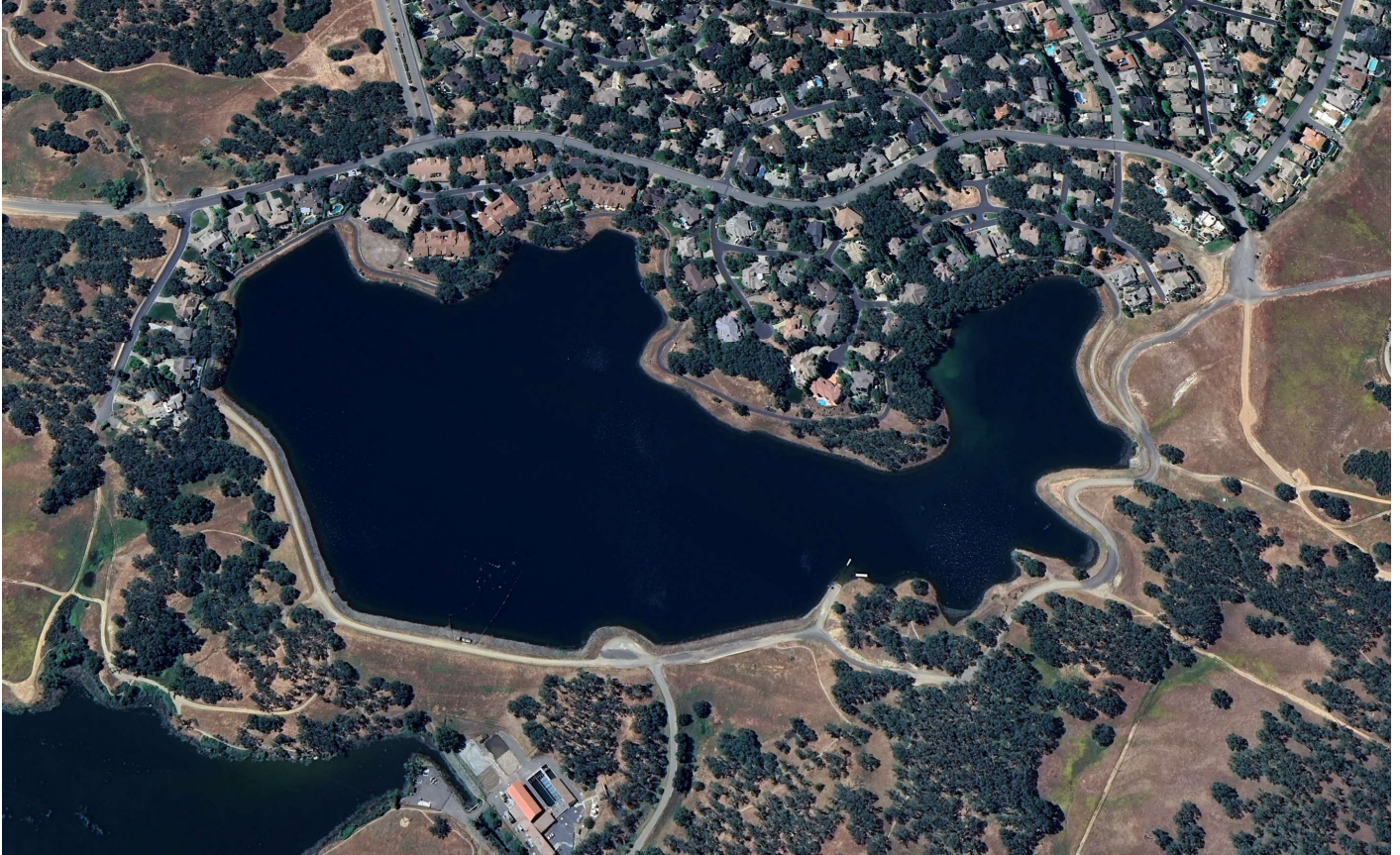
Please Issue a Single Purchase Order to: Rexel USA, Inc.
Ref: Proposal # 3801063919

Purchase order should match the value and term proposed above. If a purchase order received does not match the term of the agreement, pricing will be subject to annual price adjustments.

2.4 Distributor Terms and Conditions of Sale

All sales are subject to Rexel's Terms & Conditions of Sale in effect at the time of the quotation. Rexel's Terms and Conditions of Sale are available at www.rexelusa.com/terms or available upon request from your local Rexel representative. This quotation supersedes all pervious quotations relating to this transaction. Due to market conditions, all products or items set forth in this quotation are subject to price increases through time of shipment unless this quotations expressly states that pricing for any such products or items if firm and fixed. If services are included in this quotation, in addition to Rexel's Terms and Conditions of Sale, the services are also subject to the actual service provider's terms and conditions applicable to such services.

PROPOSAL



PROPOSED HARVESTING OF AQUATIC VEGETATION AT LAKE CHESBRO - RANCHO MURIETTA

Estimated project start date: August 24th 2026

Each Harvester and Crew:	\$1850 per day
Truck, Conveyor Trailer and Crew:	\$400 per day
Transport each Harvester:	\$600 each way
Crew Lodging:	\$500 per day

Three days of lake cleaning estimated at \$15,000 for two harvesters and truck, trailer and crew.

*Minimum of three days of work required with two harvesters
Includes Harvester, Crew, Fuel, and Lodging.
Subject to full terms and conditions of the full Proposal*

May 20, 2026

Re: Proposal for Aquatic Plant Chopping and Harvesting at Retention Pond.

Aquatic Harvesting Inc. is pleased to submit the following proposal to harvest the excessive aquatic plants from Lake Chesbro in Rancho Murietta.

We are based near San Francisco with clients in Arizona, California, Oregon, Washington, Idaho and Texas. Our staff is highly valued for their excellent customer service. We enjoy our work and provide an excellent service at a fair price.



Our crew and equipment have harvested a diverse variety of aquatic weeds from lakes, ponds, rivers, and deltas across the Western and Southern states. We are certain that we can provide you with the aquatic harvesting service you seek. If at any time you are not satisfied, tell me. The concern will be corrected, or you will not be charged for the work that day.

We operate a diverse set of aquatic vegetation removal equipment. Harvesters, Transport barges, Herbicide Applicator boats, an Aquatic Vegetation Cutter (AVC aka "Swamp Devil") and support equipment like Trucks, Trailers, Conveyors, and herbicide application boats. With our AVC (*Aquatic Vegetation Cutter*), we remove difficult shoreline plants like Bulrush, Cattail and Primrose along with their root structure. With our harvesters we cut and remove aquatic plants to a depth of nearly six feet.



Proposal For Aquatic Vegetation Removal:

Aquatic Harvesting inc. proposes to utilize an aquatic weed harvester to cut and remove the aquatic weeds found throughout Lake Chesbro. The harvesters are easily launched at your boat ramp or soft sloped shoreline. No disturbance to normal lake uses or fish / wildlife is anticipated.

Our harvesters automatically cut and collect the aquatic plants. When the Harvester becomes full of plants, it will return to the ramp and offload the cut material onto our specially designed conveyor-trailer. The harvested plants can be left on the ground to dry or immediately be transported to a disposal site. The value of drying the aquatic plants to reduce their weight and thereby reduce the disposal fees. When transporting the plants on city streets, we usually cover the load with a tarp to minimize spilling.



Harvester and Operator Fee:

Each lake is different, and the volume and type of plant can vary. Within the same lake, some areas are thick with plants, while other areas are sparse. Therefore, it's difficult to estimate the area that can be harvested in a day. But on average we harvest up to two acres each day per harvester. To be fair and stabilize expectations, we charge a daily rate for our equipment. If someone thinks we are not working effectively, then alert me and the concern will be corrected, or you will not be charged for that day. We are happy to explain what we are doing and why and offer to take folks on the harvester to help them understand the process. Working closely with your staff and providing daily verbal reports is welcome.



Disposal Fee:

In previous visits we moved the material to a nearby field for decomposing / composting. If this remains available to us there will be no disposal fee.



Travel Expenses:

We propose to be reimbursed for our travel expenses. This includes transporting equipment as well as residing near the job site. We can estimate or itemize these expenses on the invoice. We don't seek to profit from this, just cover our expenses. Estimate is \$150 per crew per day.

We estimate \$500 per boat each way to deliver or remove the equipment. This includes driver wages and fuel. A full day of driving is about \$1000 per harvester/truck. (\$400 fuel, \$200 food/lodging \$300 wages).



Equipment:

For this project we intend to use "H8" harvesters. This boat travels well and is reliable. Our equipment runs great and is specially modified to operate quietly and carefully to bring minimal disturbance to your community.

The harvester has a cutting width of 8' and a cutting depth of nearly 6'. It has a storage capacity of about 230 cubic feet. This unit is hydraulically powered with a Yanmar or Kabota diesel engine. Three-inch steel blades will be used to cut the underwater plants, and conveyor belts immediately remove cut vegetation from the water.

As a safeguard, our equipment utilizes vegetable-based Bio-Fleet™ biodegradable hydraulic fluid. This fluid meets the Environmental Protection Agency guidelines for Environmentally Acceptable Lubricants, exceeding the acute toxicity (LC-50 / EC-50 >1000 ppm) criteria adopted by the US

Fish and Wildlife Service and the US EPA. Aquatic Harvesting inc. pays extra expense with this fluid as an extra precaution to protect your waterways.

Additionally, hydraulically controlled “conveyor trailers” can be provided with a four-wheel drive truck to safely transport the harvested biomass to a nearby disposal site.



Cost and Deliverables:

Based on the above proposal, we offer the following per day rates:

- Harvester, fuel and operator: \$1850 per day per boat
- Optional - Conveyor trailer with 4WD drive truck and driver: \$400 per day
- Travel Expenses (*itemized or estimated*)
 - Equipment and crew transport (*fuel, food/lodging, wages*): \$600 / harvester each way
 - On site (*food/lodging*) \$167 per day per crew

We strive to offer our services at a fair price. We're a fifteen-year-old company that's raising expectations by providing a skilled crew, well maintained equipment and going the "extra mile" to insure happy customers.

Tasks and Schedule:

Below is a summary of the tasks and sub-tasks that we will perform at each harvest, and the schedule. As you will note by comparing the list of tasks (below) and the list of deliverables, Aquatic Harvesting Inc. often elects to not charge for some tasks

- Mobilization
 - Deliver Equipment to your job site.
- Cutting and Harvesting
 - Cut aquatic vegetation at sites designated by your staff.
 - Transport cut vegetation to your disposal site.
 - Moving equipment between job sites.
- De-mobilization
 - Clean-up work area and remove equipment.

Assumptions:

All underwater pipes, conduits, electrical wires, communication lines, aeration lines, irrigation lines, morning lines and other obstacles must be marked and discussed with the operator prior to harvesting. Aquatic Harvesting Inc. will not be liable for damage caused by our equipment or employees to obstacles that are unknown or unmarked.

Conclusion:

If you have any questions regarding this Proposal or the Scope of Work, or you need additional information, please call me. Aquatic Harvesting Inc. has a fleet of specialized equipment to keep your waterways and shorelines in good condition and free of aquatic plants.

We welcome the opportunity to help you maintain your waterways year 'round.

Sincerely,



Rick Hatton

Aquatic Harvesting Inc.

925-786-0095

rick@aquaticharvesting.com

AVAILABLE EQUIPMENT

2001 Model HM-420 Harvester

This has only 500 hours of operation and is in near new condition. It holds 460 cubic feet of vegetation. It has a stainless steel hull and is powered by a Hatz diesel engine. With its large payload capacity, it is selected when large loads are anticipated or there's a long distance between offloads.



2002 Model H8-220 Harvesters

We have two of these harvesters. This model is the "work-horse" of the harvesting industry. It's an operator favorite because of the high reliability and versatility. It excels in lakes, ponds, marinas and rivers. These harvesters have removed up to twice the volume of plants per hour than larger harvesters due to their strength, speed and maneuverability. These can be outfitted with 20' x 1.5' "pusher blades" to push large volume of floating plants (i.e. hyacinth & pennywort). We believe that this size is a fastest and most nimble harvester available. It is powered by a 45 HP John Deere diesel engine or a 35 HP Kubota diesel engine.



Aquarius T12 Transport Barge

This is helpful in operations where trips from the harvesting area to the off-load site are long distance. With the T12 Transporter, our Harvesters can off-load into this transport barge and eliminate travel to and from the dump area.

The transport barge improves large project efficiencies by working like a “dump truck”, carrying cut plants from the harvesting area to the off-load point. This transporter carries 650 cubic feet of vegetation. It is propelled quickly with two propellers and powered by a Hatz diesel engine.



“AVC” Aquatic Vegetation Cutter

The **AVC** excels at removing Tule, Cattail and Bulrush plants. This machine excels in wetland maintenance. It quickly cuts shoreline plants and their root structure, with twin four foot diameter rotating blades. This rare craft is powered by high torque Cummins diesel engine.

(Google: “Aquatic Harvesting AVC” for video of this equipment).



Shore Conveyor

This conveyor has 6.5' wide galvanized flat-wire belting that reaches 28.5' and a height of 9.5'. It can be towed to the job site and set up in minutes. It is hydraulically controlled and is powered by a new Briggs and Stratton 23 HP gas engine. It has minimal usage and is in excellent condition.

Shore conveyors are used to transfer harvested vegetation into dump trucks.



Levy Conveyor

We have three new "Levy Conveyors". Each conveyor can be adjusted at the job site to match a varying slope on dirt and/or rock covered levies. Together, these hydraulically powered conveyors move material up a levy wall and across land, up to a distance of 60'.

Pontoon, Inflatable and Ridged Jon Boats

These are stable platform for applying aquatic herbicides as well as non-herbicide methods for removing "blue green algae". Some boats are equipped to automatically spread granular or powder material in twenty-foot diameter stripes with our proprietary applicator. This boat is often used by municipal water districts to apply Phycomycin to remove blue-green algae.

It can also be used as a material and crew transport vehicle.

Since much of our work occurs within environmentally sensitive areas, we utilize biodegradable **plant based hydraulic fluid** that meets stringent USCG standards. All of our equipment is well maintained and ready for work.



May 20, 2026

Pollution Prevention / Spill Response Plan

Aquatic Harvesting Inc. utilizes mechanical harvesters to remove aquatic vegetation and other debris from ponds, lakes, and other waterways. Our equipment is powered by diesel engines which in turn provide torque to a hydraulic system. Diesel fuel, engine oil, engine coolant and hydraulic fluid would be the source of pollution caused by a harvester. We are aware of and strive to minimize these dangers.

Our equipment is well maintained. Our operators are trained to inspect the equipment throughout the workday. If a fluid leak is noticed, the equipment is shut off and its source is found. Leakage of diesel engine fluids (oil, fuel, coolant) is extremely rare. The only instance we know of was from a boat that rolled over. To prevent this, our operators are repeatedly reminded of what causes a "roll".

Hydraulic fluid leaks do occur, but this can be minimized and usually prevented. The most common hydraulic fluid leak is caused by a burst hydraulic hose or loose hose fitting. To prevent this from occurring we inspect the hoses and replace any that show excessive wear. Hoses that rub against metal are protected by plastic plates on area of rub. We carry spare hoses with each harvester in case of a defective hose. If a hose bursts the operator is alerted by the sound of oil escaping and or a smell. A burst hose causes the boat to be shut off and then the hose is replaced. Area that has oil is cleaned with Dawn soap, towels, and oil absorption blankets.

The other source of hydraulic fluid leakage is a defective hydraulic cylinder or motor seal. These fail slowly and at first are noticed by an oily residue around the shaft but can grow to a few drops per minute if unchecked over a period of days. Operators inspect all shafts at the beginning of each shift. Throughout the day, the operators also monitor the boat hull and water around the boat for an oily sheen. This can be noticed very quickly, after just a few drops in the water by an alert operator. When leaks occur, the defective component is replaced and or repaired and the surrounding area is cleaned.

Aquatic Harvesting strives to minimize and quickly respond to equipment malfunctions. We keep spare parts available on work sites and do not use equipment that threatens to cause pollution. Our equipment utilizes US Coast Guard approved hydraulic oil. This fluid is approved for use in environmentally sensitive areas.

Finally, we recognize and take steps to prevent the introduction of new plants. After each job our equipment is thoroughly cleaned, and all plant / animal pieces are removed and pressure washed with hot water.



MUNIQUIP, LLC

Your Source For Water & Wastewater Equipment



DATE: 5/12/26
TO: Rancho Murieta
RE: **Grundfos Paco Pumps**

QUOTE #28341

Dear Travis,

We're pleased to offer you the Grundfos PACO options for your consideration. Item 1 below is a complete pump and base, while item 2 is the wet end and motor with no base.

ITEM 1

Grundfos PACO LC 10-20709-140008-2851P

Designed for the duty condition of 267GPM at 200' TDH. In cast iron construction, 2.5" suction 2" discharge ANSI flanged, stainless steel 304 impeller, type 21S seal, tin bronze wear ring, bronze shaft sleeve, 3x230/460V 60Hz 3600rpm 20HP TEFC motor, included base, coupling and shipping included, as manufactured by **Grundfos**.

Item 1 for the price of**\$9,779.86**

ITEM 2

Grundfos PACO LC 10-20709-140008-2851P

Designed for the duty condition of 267GPM at 200' TDH. In cast iron construction, 2.5" suction 2" discharge ANSI flanged, stainless steel 304 impeller, type 21S seal, tin bronze wear ring, bronze shaft sleeve, 3x230/460V 60Hz 3600rpm 20HP TEFC motor, **does not** include base, shipping included, as manufactured by **Grundfos**.

Item 2 for the price of**\$6,677.79**

NOTES:

Lead time – 18-20 Weeks.

Sales tax and startup services are not included in the above pricing.

Shipping is included in the above pricing.

Prices exclude anchor bolts, intermediate guide rail brackets, controls, VFDs and other components not specifically included in the above details.

Quotation is valid for 30 days.

This proposal is subject to the attached MuniQuip Terms & Conditions and/or the Terms and Conditions of the individual companies MuniQuip has quoted.

Initial _____

Best Wishes,

Joshua Wyatt

Sales Engineer

2017 Opportunity Drive, Suite 4

Roseville, CA 95678

916-759-3292 cell

916-787-5641 office

916-787-5642 fax

2017 Opportunity Drive # 4, Roseville, CA 95678, (916) 787-5641 office, (916) 787-5642 fax

www.muniquipllc.com

Grundfos Series LC - End Suction Centrifugal Pump, Close Coupled

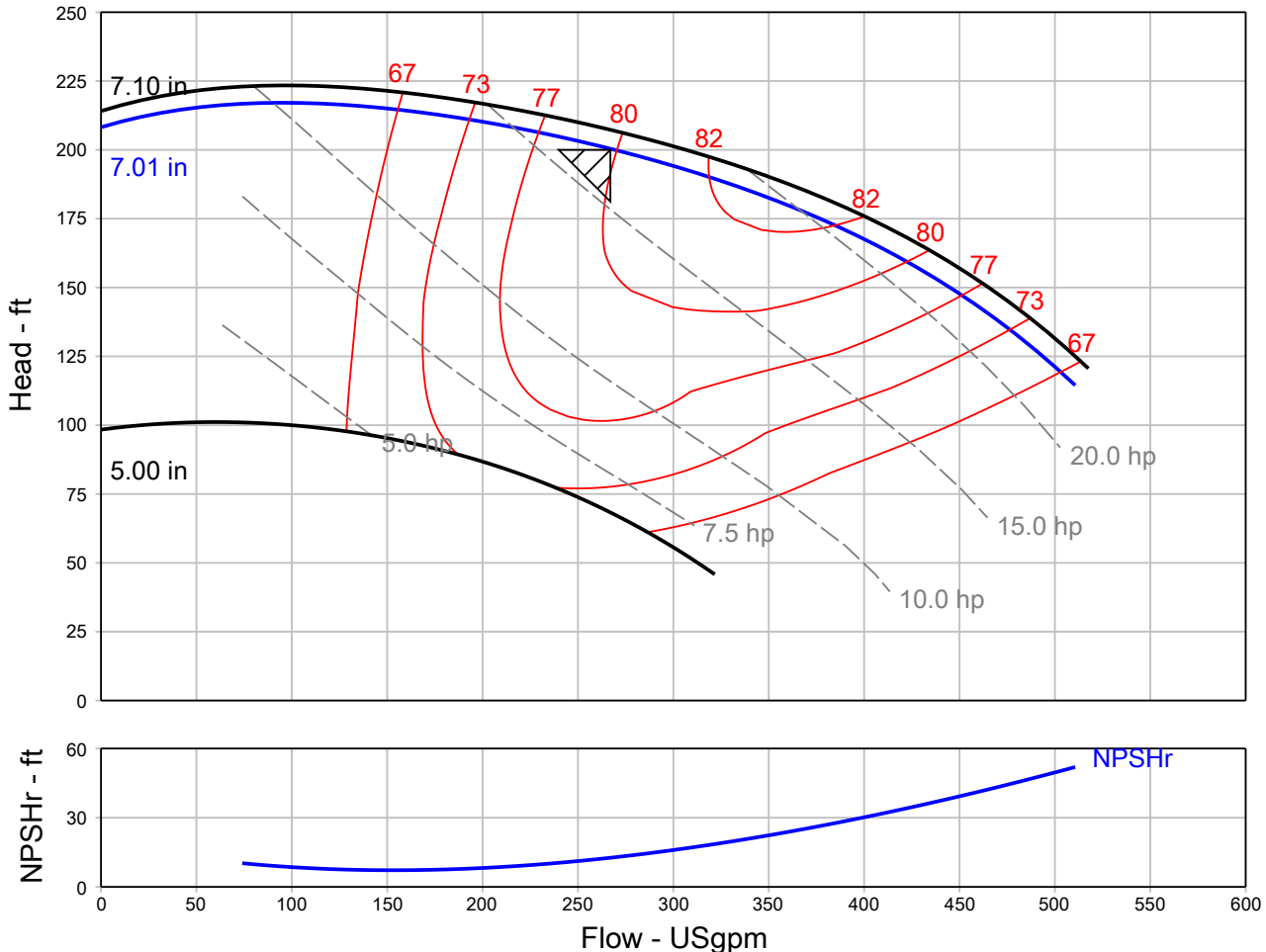
QUOTE NUMBER / ID 1897883	UNIT TAG 001	QUANTITY 1
REPRESENTATIVE	SERVICE	DATE
ENGINEER	SUBMITTED BY	DATE
CONTRACTOR	APPROVED BY	DATE
	ORDER #	DATE



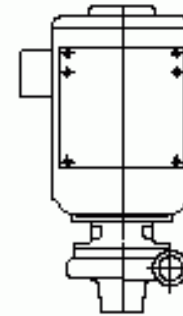
LC 20709
3530 rpm

Part Number N/A

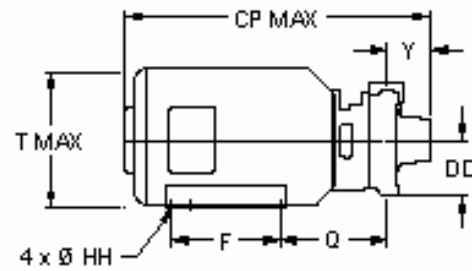
Conditions of Service		Pump Data		Motor Data	
Flow	267.0 USgpm	Impeller Diameter	7.01 in	Motor HP	20 HP
Head	200.0 ft	Max. Imp. Dia.	7.10 in	BHP	16.93 HP
Liquid	Cold Water	Min. Imp. Dia.	5.00 in	Enclosure	TEFC
Temperature	68.00 deg F	Efficiency	79.8 %	Voltage	230/460 V
NPSHr	12.63 ft	Suction	2.5 in.	Phase	3 Phase
Viscosity	1.00 cP	Discharge	2 in.	Cycle	60
Specific Gravity	1.000 SG	PEI (CL)	0.88	Frame Size	256JMZ
		ER (CL)	12		



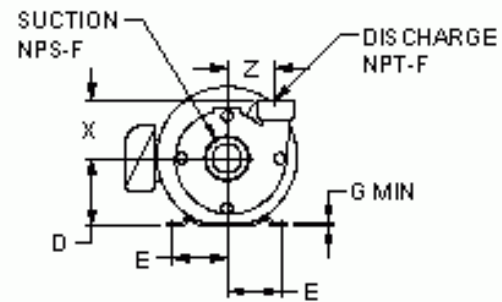
Grundfos Series LC - End Suction Centrifugal Pump, Close Coupled



PLAN



SIDE VIEW



END VIEW

NOT FOR CONSTRUCTION, unless certified and referenced on order

Units	Frame	Suct	Disch	CP	D	DD	E	F	G	HH	Q	T	X	Y	Z	Weight
inches	256	2.5	2	28.00	7.50	5.13	3.75	7.50	0.63	0.44	2.88	11.50	5.38	3.94	4.50	TBD

Grundfos Series LC - End Suction Centrifugal Pump, Close Coupled

QUOTE NUMBER / ID 1897883	UNIT TAG 001	LC 20709
----------------------------------	---------------------	-----------------

MATERIALS OF CONSTRUCTION			
PART	MATERIAL	PART	MATERIAL
Rotation Options	Clockwise	Impeller Washer	S.S., AISI-303
Base/Stand Type	None	Impeller Key	Steel, AISI 1045
Connections	FPT (threaded)/ 125# ANSI	Sleeve Material	Bronze, III932, C89835 or No Sleeves
Wear Ring Type	Case Wear Ring	Wear Ring Material	Tin Bronze, ASTM B584-90500
Pump Coatings	Standard Paint	Packing Gland	Not Applicable
NSF-50 Certification	Optional	Lantern Ring	None
NSF-61 Certification	Optional	Seal Type	Type 21
Motor Drip Canopy	Optional	Seal Material	Ceramic/Carbon/Buna
Casing	Cast Iron, ASTM-A48, CL 30	O-Rings	Buna N
Motor Shaft	Steel, AISI 1045 or S.S	Seal Flush Options	No External flush
Backplate/Seal Plate	Cast Iron, ASTM-A48, CL 30	Gaskets	Vegetable Fiber
Motor Bracket	Cast Iron, ASTM-A48, CL 30	Casing Bolts	Steel, Grade 5
Impeller	Stainless Steel, AISI-304	Impeller Cap Screw	Stainless Steel, AISI-316

* All materials based on STANDARD configuration

Pump Performance Datasheet

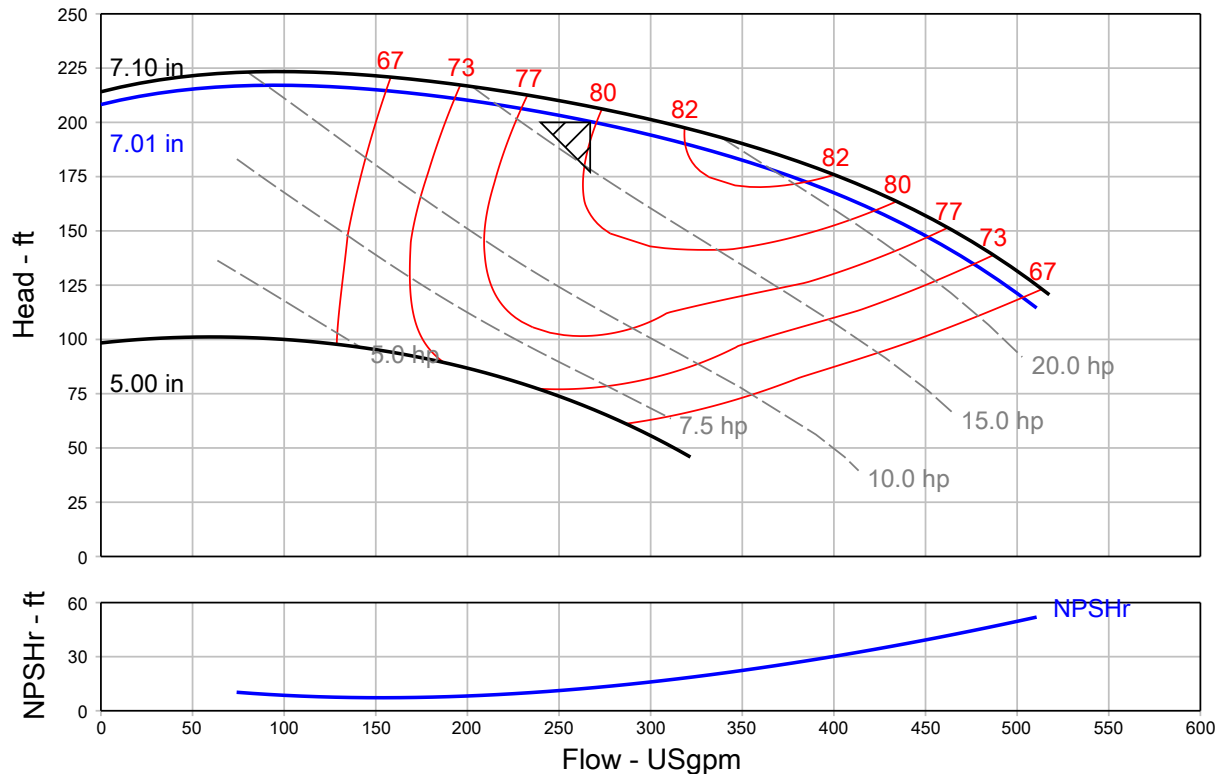
Customer :	Quote Number / ID :	1897883
Customer ref. / PO :	Model :	20709 LC
Tag Number : 001	Stages :	1
Service :	Based on curve number :	RC9912-1-SS Rev May22
Quantity : 1	Basic model number :	-
	Date last saved :	04/17/2026 10:22 AM

Operating Conditions		Liquid	
Flow, rated	: 267.0 USgpm	Liquid type	: Cold Water
Differential head / pressure, rated (requested)	: 200.0 ft	Additional liquid description	:
Differential head / pressure, rated (actual)	: 200.4 ft	Solids diameter, max	: 0.00 in
Suction pressure, rated / max	: 0.00 / 0.00 psi.g	Solids concentration, by volume	: 0.00 %
NPSH available, rated	: Ample	Temperature, max	: 68.00 deg F
Site Supply Frequency	: 60 Hz	Fluid density, rated / max	: 1.000 / 1.000 SG
		Viscosity, rated	: 1.00 cP
		Vapor pressure, rated	: 0.34 psi.a

Performance		Material	
Speed, rated	: 3530 rpm	Material selected	: Cast iron
Impeller diameter, rated	: 7.01 in		
Impeller diameter, maximum	: 7.10 in		
Impeller diameter, minimum	: 5.00 in		
Efficiency	: 79.80 %		

Performance		Pressure Data	
NPSH required / margin required	: 12.63 / 0.00 ft	Maximum working pressure	: 93.96 psi.g
Ns (imp. eye flow) / Nss (imp. eye flow)	: 1,325 / 6,186 US Units	Maximum allowable working pressure	: 175.0 psi.g
MCSF	: 96.27 USgpm	Maximum allowable suction pressure	: 175.0 psi.g
Head, maximum, rated diameter	: 217.1 ft	Hydrostatic test pressure	: 263.0 psi.g
Head rise to shutoff	: 3.90 %		
Flow, best eff. point	: 353.2 USgpm		
Flow ratio, rated / BEP	: 75.60 %		
Diameter ratio (rated / max)	: 98.73 %		
Head ratio (rated dia / max dia)	: 96.68 %		
Cq/Ch/Ce/Cn [ANSI/HI 9.6.7-2010]	: 1.00 / 1.00 / 1.00 / 1.00 / 1.34		
Selection status	: Acceptable		

Energy Indexes		Driver & Power Data (@Max density)	
PEI (CL)	: 0.88	Motor sizing specification	: Rated power (based on duty point)
ER (CL)	: 12	Margin over specification	: 0.00 %
		Service factor	: 1.00
		Power, hydraulic	: 13.51 hp
		Rated power (based on duty point)	: 16.93 hp
		Max power (non-overloading)	: 22.74 hp
		Nameplate motor rating	: 20.00 hp / 14.91 kW



Construction Datasheet

Project name	: Default	Tag Number	: 001
Consulting engineer	:	Service	:
Customer	: MUNIQUIP INC	Model	: 20709 LC
Customer ref. / PO	:	Quantity	: 1
Quote Number / ID	: 1897883	Grundfos Partner	: MUNIQUIP INC
Date last saved	: 04/17/2026 10:22 AM	Quoted By (Sales Engineer)	: Joshua Wyatt

Construction				Motor Information	
--------------	--	--	--	-------------------	--

Nozzle	Size (in.)	Nozzle Configuration	Pos'n	Manufacturer	: Baldor
Suction	2.5	NPS	End	Frame Size	: 256JM
Discharge	2	NPS	Top	Power	: 20.00 hp

Orientation / Configuration	: Horizontal	RPM	: 3600 rpm
Rotation	: Clockwise	Enclosure	: TEFC
Wear Ring Configuration	: Single - Case	Operating Power Supply	: 230/460/3/60
Discharge Elbow Size	: -	Efficiency	: Premium
Subplate	: -	Service factor	: 1.15
Sump Depth (feet)	: -	Motor Application	: General Purpose
Bearing Frame	: -	Motor Options/Accessories	: -
Bearing Frame Foot	: -	Cord Length (feet)	: -
Bearing Type (Radial/Thrust)	: In motor		
Bearing Lubrication	: -		
Thrust Bearing	: -		
Intermediate Bearing	: -		
Lower Bearing	: -		
Bearing Housing Accessories	: -		
PACO Construction Code	: 10-20709-140008-2851P		

Materials	
-----------	--

Case	: Cast Iron, ASTM A48 - Class 30
Motor Bracket	: Cast Iron, ASTM-A48, CL 30
Impeller	: Stainless Steel, AISI-304 (H304)
Impeller Cap Screw and Washer	: Stainless Steel, AISI-303
Impeller Key	: Stainless Steel, AISI 316
Case wear ring	: Tin Bronze, ASTM B584-90500 (B18)
Impeller wear ring	: -
Pump Shaft	: Steel, AISI-1040
Sleeve	: Bronze, III932, C89835
Line Shaft	: -
Column	: -
Discharge Pipe	: -
Discharge Elbow	: -
Suction Elbow	: -
Subplate	: -
Hardware	: Steel, Grade 5
O Rings	: Buna N
Pump Coatings	: Standard Manufacturer's Paint

Baseplate, Coupling and Guard	
-------------------------------	--

Baseplate	: Cast Iron - ASTM A48 Class 30
Drip Pan	: Drip Rim
Coupling	: -
Guard	: Not Applicable

Seal & Packing Construction	
-----------------------------	--

Sealing Method	: Single Seal, Type 21S
Seal Material	: Buna Carbon Ceramic SS-Spring and Hardware
Packing Gland	: -
Lantern Ring	: -
Recirculation Lines	: None

Weights (Approx.)	
-------------------	--

Pump	: 45.00 lb
Baseplate	: -
Driver	: 267.0 lb
Estimated Shipping gross weight	: 312.0 lb



TERMS AND CONDITIONS

1. Acceptance of this Order is final only upon written approval by MuniQuip, L.L.C. ("MQ").
2. The total sale price, as set forth on the first page hereof, including all tax, is payable by Purchaser as follows: One-Hundred percent (100%) within 30 days of notice of availability for shipment by the manufacturer. Any amount not paid when due shall bear interest at the rate of 18% *per annum*. Purchaser agrees to pay reasonable attorney's fees and all collection costs incurred by MQ if payment is not timely received. All payments by Purchaser shall be made without offset or deduction.
3. All prices are FOB source shipping point. MQ is not responsible for any loss during transit. Breakage or shortage claims arising from shipments shall be made by the Purchaser directly against the carrier. Purchaser will accept shipment within five (5) days of notice of availability from MQ.
4. Purchaser understands and acknowledges that the Equipment is not manufactured by MQ, and that MQ offers no representations or warranties of any kind or nature with respect to the Equipment. **SPECIFICALLY, MQ DOES NOT OFFER ANY EXPRESS OR IMPLIED WARRANTY OF DESCRIPTION, TITLE, OR CONDITION OF LIEN OR SECURITY INTERESTS, MERCHANTABILITY, OR FITNESS FOR A PARTICULAR PURPOSE.** The only warranties with respect to the Equipment shall be those offered by the manufacturer, if any. The sole obligation of MQ shall be to assist Purchaser in connection with the presentation of any warranty claim to the Manufacturer. If applicable, MQ will assign all manufacturers' warranties to Purchaser or end user. Purchaser shall be responsible for all costs and labor for installation and start-up assistance of the Equipment.
5. MQ shall not be responsible for any loss, claim or damages resulting from any force majeure, including but not limited to strikes, accidents, unavailability of labor or materials, acts of God, weather conditions, inability of carrier to deliver, legislative, administrative, or executive law, order or requisition of any governmental entity, or any event not under the direct control of MQ. Any delay in delivery from the Manufacturer caused by a force majeure or action or inaction of the Manufacturer or carrier shall not be the responsibility of MQ.
6. In no event shall MQ be responsible for any liquidated, consequential or special damages arising from breach of this Agreement, any delay of delivery or any other cause.
7. Purchaser shall pay any sales, excise, or other government charge payable by MQ to federal, state or local authorities. Any such taxes now or hereafter imposed upon sales or shipments will be added to the purchase price. Purchaser agrees to reimburse MQ for any such tax or to provide MQ acceptable tax exemption certificates.
8. Purchaser may not cancel this Order without the prior written consent of MQ, and in any event Purchaser shall be responsible for all costs, charges and fees caused by such cancellation, including labor expended, material procured, and reasonable overhead expenses applicable thereto.

Initial _____



MUNIQUIP, LLC

Your Source For Water & Wastewater Equipment



9. Any failure of MQ to insist upon the performance of any term or condition of this Agreement or any prior quotations, agreements, orders, and acceptances or orders related thereto shall not be deemed to be a waiver of such term, condition, or any other right in the future.
10. The provisions hereof shall apply to all addendums or changes hereto although not specifically set forth therein, all of these terms and conditions being considered to be additional terms and conditions to any such addendum or change.
11. Purchaser agrees to inspect the Equipment immediately upon delivery. Any claim for shortages must be made to MQ within ten (10) days after shipment or shall be deemed waived. Any other claim by Purchaser, other than warranty claims against the manufacturer, shall be made within thirty (30) days after receipt of shipment, and if not made, shall be waived.
12. Purchaser agrees to provide and maintain adequate insurance against loss of or damage to the Equipment until the purchase price to MQ has been fully paid. Any loss or damage to the Equipment after transfer of possession shall not relieve the Purchaser from obligations under this Agreement.
13. This Agreement represents the final and complete understanding of the parties with respect to all terms and conditions of the sale of Equipment as contemplated hereby, and there are no other representations, promises or agreements, whether written or oral, made in connection herewith. Purchaser specifically understands and acknowledges that no agent, employee or representative of MQ has the authority to or has made any other representation, promise or agreement except as specifically set forth in this Agreement. No amendment to this Agreement shall be effective unless it is in writing and executed by both parties.
14. This Agreement shall be construed under the laws of the State of California, and any action arising hereunder shall be commenced in that state.

Customer Signature: _____

Print Name: _____

Title: _____

Company Name: _____

Date: _____

Purchase Order #: _____







June 2, 2026

Travis Bohannon
Chief Plant Operator
Rancho Murieta Community Services District
P.O. Box 1050
Rancho Murieta, CA 95683
916.870.5368
tbohannon@rmcsd.com

Proposal for Cosumnes River Watershed Sanitary Survey Update

Dear Travis:

We are pleased to provide you with this proposal to provide professional services to prepare the 5-year update to the Cosumnes River Watershed Sanitary Survey (WSS). The WSS will cover the watershed associated with Rancho Murieta Community Services District's (District) water treatment plants.

Project Description

The objectives of this watershed sanitary survey include:

- Meet the State Water Resources Control Board, Division of Drinking Water (DDW), Surface Water Treatment regulatory requirements
- Assess conditions in the watershed that have the potential to impact raw water quality at the surface water treatment plants
- Analyze the past 5 years of raw and treated water quality data to determine the treatment required to meet current and future drinking water regulations
- Identify watershed management practices that have the potential to reduce contaminants in the watershed

Scope of Work

The following is a detailed description of the tasks to be performed for this project:

Task 1 – Review Prior 2021 WSS and Regulatory Compliance

Verdantas will review the December 2021 WSS to identify any compliance gaps with DDW requirements and AWWA guidelines. We will address any identified issues in the 2026 WSS update.

Task 2 - Document WSS Progress

Verdantas will review the information provided by the District regarding the progress made in addressing the issues of future developments near reservoirs, erosion control, and wildfire preparedness recommended in the 2021 WSS. This information will be summarized in the new WSS.

Task 3 – Field Survey

Verdantas will perform a field survey of the watershed to verify the watershed description presented in the previous WSS, evaluate the existing water supply systems and identify potential contaminant sources. The previous versions of the WSS will be the basis for this survey and the information will be updated, if necessary, based on findings from the field survey or information provided during the field survey or provided by the District.

Task 4 – Desktop Survey

Verdantas will review available public information including waste discharge permits, environmental reports and water quality data to identify potential contaminant sources and evaluate the level of water treatment provided. Verdantas will summarize the raw and treated water quality data provided by the District for the past 5 years.

Task 5 – Prepare WSS Update

The proposed table of contents for the WSS Update includes:

1. Introduction and Purpose
2. Summary of the 2021 WSS
3. Progress Made Since the 2021 WSS
4. Watershed Description
5. Water Supply Systems
6. Potential Contaminant Sources and Management Practices
7. Water Quality Assessment
8. Conclusions and Recommendations

Verdantas will prepare a draft version of the WSS for review by District staff before preparing a final version for DDW.

Task 6 - Project Management

This task includes general management of the project from initial kick-off through delivery of the final WSS. This task includes the development of monthly invoices that will be accompanied with monthly progress reports. The monthly invoices will detail hours by staff and include all expenses.

The monthly progress reports will summarize the services provided during the month, identify any outstanding issues, include monthly cost by task and identify the remaining budget.

Assumptions

- One (1) site visit is included for completion of the field survey
- Desktop survey information will be collected via telephone and/or internet; District staff will be used for field information collection
- The water quality data is available in electronic format in either spreadsheet or database format
- The watershed description and water supply system figures have not changed since the 2021 WSS
- Up to one (1) kick off meeting and one (1) review meeting to discuss District comments on the draft WSS Update (virtual)
- Scope of work to be completed by December 2026

Our proposed fee for this project is detailed in the attached Estimated Work Effort and Cost table. Our standard rate sheet for 2026 is also attached for reference. We look forward to assisting you with your Cosumnes WSS Update project. If you have any questions, or desire any additional information, please contact me at (530) 200-6309.

Sincerely,



Ashley Smith, PE
Principal, Senior Project Manager



Tim Hasler, PE
Principal, Group Leader

Attachments

Attachment A: Estimated Work Effort and Cost Table
Attachment B: 2026 Standard Rate Sheet

Attachment A:
Estimated Work Effort and Cost Table

Estimated Work Effort and Cost

2026 Cosumnes River Watershed Sanitary Survey Update

Task No.	Task Description	Principal/ QA/QC	Project Manager	Proj Engineer	Staff Engr 1	Admin 2	Verdantas Labor Hours	Total Labor (\$)	Total Cost (\$)
	2026	\$ 305.00	\$ 270.00	\$ 200.00	\$ 157.00	\$ 110.00			
Task 1 - Review Prior 2021 WSS and Regulatory Compliance									
		2	6	8	12	0	28	\$ 5,714	\$ 5,714
Task 2 - Document WSS Progress									
		0	2	4	4	0	10	\$ 1,968	\$ 1,968
Task 3 - Field Survey									
		0	8	8	8	0	24	\$ 5,016	\$ 5,016
Task 4 - Desktop Survey									
		0	8	24	32	0	64	\$ 11,984	\$ 11,984
Task 5 - Prepare WSS Update									
		4	4	16	24	0	48	\$ 9,268	\$ 9,268
Task 6 - Project Management									
		4	8	0	0	6	18	\$ 4,040	\$ 4,040
COLUMN TOTALS		10	36	60	80	6	144	\$ 37,990	\$ 37,990

TOTAL COST	\$ 37,990
-------------------	------------------

Attachment B:
2026 Standard Rate Sheet

VERDANTAS NorCal/OR AREA
2026 STANDARD FOLSOM BILLING RATE



Professional Services	Hourly Rate	Survey	Hourly Rate
Senior Consultant I	\$290.00	Survey Crew - 1 Man (Non-Prevailing)	\$230.00
Senior Consultant II	\$305.00	Survey Crew - 2 Man (Non-Prevailing)	\$320.00
Senior Consultant III	\$345.00	Survey Crew - 1 Man (Prevailing)	\$250.00
Project Manager I	\$230.00	Survey Crew - 2 Man (Prevailing)	\$360.00
Project Manager II	\$250.00		
Project Manager III	\$270.00	Support	Hourly Rate
Staff Engineer/Architect/Surveyor I	\$157.00	Administrative/Technical Editor I	\$95.00
Staff Engineer/Architect/Surveyor II	\$177.00	Administrative/Technical Editor II	\$110.00
Staff Engineer/Architect/Surveyor III	\$187.00	Project Specialist I	\$135.00
Engineer/Architect/Surveyor I	\$200.00	Project Specialist II	\$155.00
Engineer/Architect/Surveyor II	\$210.00	Group Leader	\$195.00
Engineer/Architect/Surveyor III	\$220.00	Technician I	\$125.00
Senior Engineer/Architect/Surveyor I	\$230.00	Technician II	\$135.00
Senior Engineer/Architect/Surveyor II	\$250.00	Technician III	\$160.00
Senior Engineer/Architect/Surveyor III	\$270.00	Senior Technician	\$170.00
		Building/Construction Inspector	\$190.00
CAD/Data Management	Hourly Rate	Resident Engineer	\$230.00
CAD Technician I	\$120.00	Materials/ Soils Tech (Prevailing)	\$190.00
CAD Technician II	\$130.00	Building/Construction Inspector (Prevailing)	\$207.00
CAD Technician III	\$155.00	Lead Inspector (Prevailing)	\$214.00
CAD Technician IV	\$165.00		

Notes

- Standard Billing Rates:** Our standard billing rates are reviewed no less than annually and may be adjusted at those times.
- Proposal Expiration:** Proposals are valid for at least 30 days, subject to change after 30 days; unless otherwise stated in the proposal.
- Prevailing Wages:** Our fees for prevailing wage work are based upon California prevailing wage laws and wage determinations. Unless specifically indicated in our proposal, costs for apprentice are not included. If we are required to have an apprentice on your project, additional fees will be charged. Prevailing wage rates will increase on July 1st of each year.
- Expert Testimony:** Litigation, expert witness, and all other legal and court related appearances will be billed at twice the standard fee schedule rate. There is a minimum eight-hour charge per day and a minimum overall fee of \$2,000.00 per case.
- Higher Hourly Rates:** Certain services, such as emergency/rapid response consulting, may be subject to higher hourly billing rates as agreed upon on a project-specific basis.
- Overtime:** Standard overtime rate is per California Labor Law and is billed at 1.5 or 2 times their hourly billing rate. Overtime rate for non-exempt field personnel working on a Verdantas observed holiday is billed at 2 times their hourly billing rate. Overtime rate for Prevailing wage work is per the California Department of Industrial Relations (DIR) determination and is multiplied at 1.5 to 2 times their hourly billing rate for overtime and double-time, respectively.
- Field Equipment and Supplies:** Field equipment and in-house supplies will be billed at fixed unit prices, subject to periodic updates.
- Subcontractors and Project Expenses:** All project-related expenses are chargeable at cost plus 10% or in accordance with the specific project agreement. Subcontractor charges, costs of rental of specialized equipment, and any other costs not associated with normal overhead are billed at cost plus 10% or in accordance with the specific project agreement.
- Mileage:** The mileage for personal vehicles will be billed at the current United States Internal Revenue Service reimbursement rate.
- Client Disclosures:** Client agrees to provide all information in Client's possession about actual or possible presence of buried utilities and hazardous materials on the project site, prior to fieldwork, and agrees to reimburse Verdantas for all costs related to unanticipated discovery of utilities and/or hazardous materials. Client is also responsible for providing safe and legal access to the project site for all Verdantas field personnel.



VERDANTAS NorCal/OR AREA
2026 STANDARD FOLSOM BILLING RATE



11. **Insurance & Limitation of Liability:** These rates are predicated on standard insurance coverage and a limit of Verdantas' liability equal to our total fees for a given project.
12. **General Terms and Conditions:** Please refer to the General Terms and Conditions for further details.

